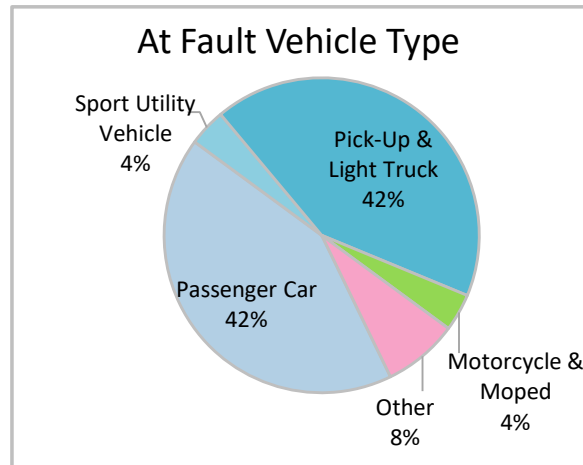
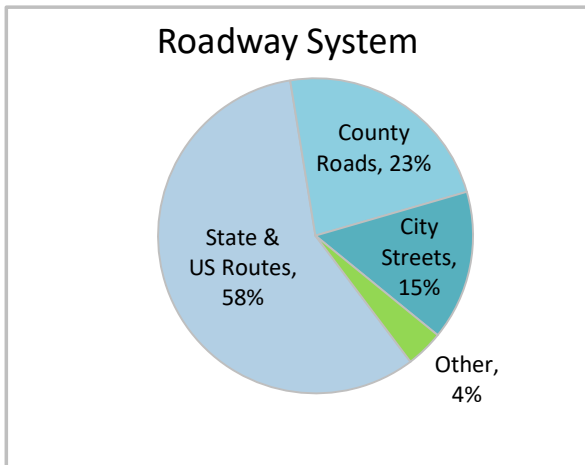
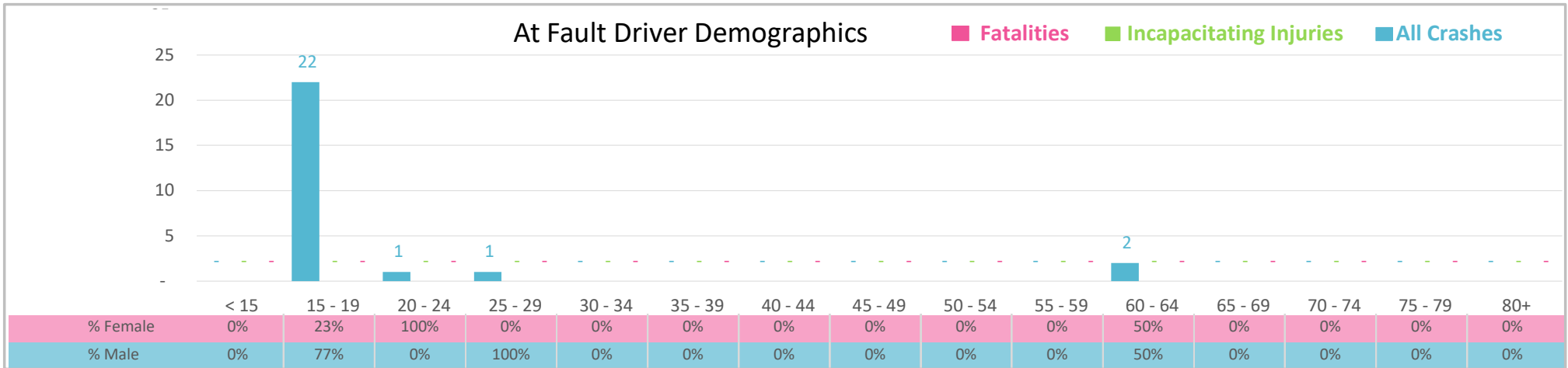




Injury Severity*	Fatal	Incapacitating	Non-Incapacitating	Possible	None/Property Damage Only	TOTAL
Crashes	0	0	6	9	11	26
People Injured	0	0	8	20	NA	28

\*NOTE: Crash severity is determined from the highest injury type in the crash (i.e. if a crash had both a fatal and a serious it is determined to be a fatal crash).



- ### Key Teen Driver Crash Facts
- 2021 population of 16,335.
  - 85% of crashes involved drivers under 20; male drivers account for 73% of all crashes.
  - Unrestrained occupant was not noted as a factor in any of the crashes.
  - Intoxication was not noted as a factor in any of the crashes.
  - 58% of crashes occurred along State and US Routes with most of the remainder occurring on County Roads.
  - Passenger car accounted for 42% of motor vehicles involved in teen driver crashes.
  - 38% of crashes occurred at night.

NOTE: Fatalities and Serious Injuries in bar graphs indicate persons not crashes. | SOURCES: 2022 CARS data (unofficial at time of report). | DATE GENERATED: 5/1/2023