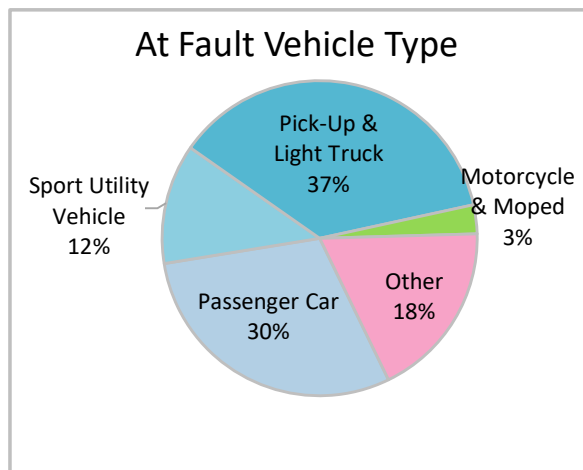
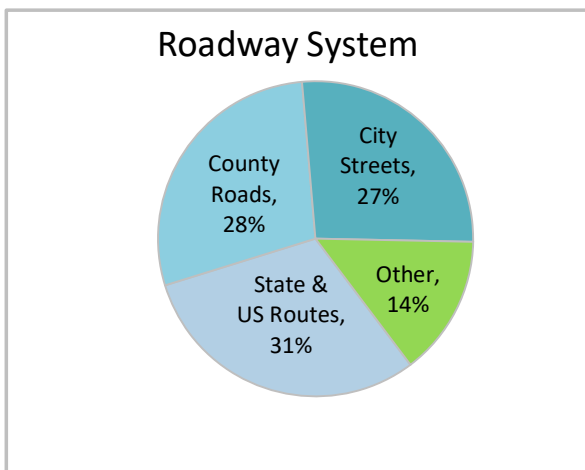
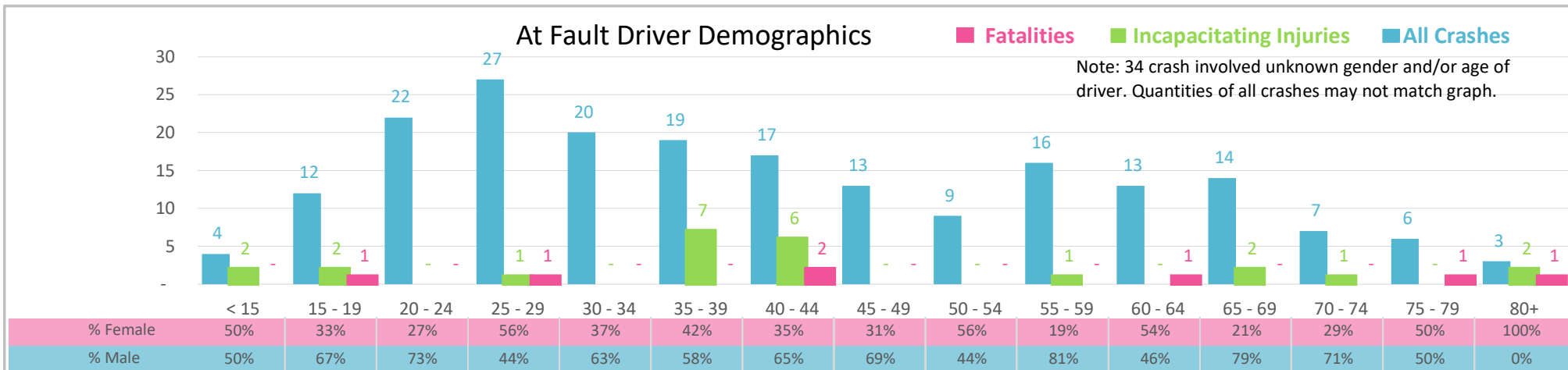




Injury Severity*	Fatal	Incapacitating	Non-Incapacitating	Possible	None/Property Damage Only	TOTAL
Crashes	6	12	22	23	173	236
People Injured	7	24	38	35	NA	104

*NOTE: Crash severity is determined from the highest injury type in the crash (i.e. if a crash had both a fatal and a serious it is determined to be a fatal crash).



- ### Key Lane Departure Crash Facts
- 2021 population of 21,815.
 - Driver age is distributed broadly across all age groups under 70; male drivers account for 62% of all crashes and resulted in 5 of 7 fatalities.
 - Unrestrained occupant was noted as a factor in 11% of crashes and resulted in the 5 of 7 fatalities.
 - Intoxication was noted as a factor in 10% of crashes and resulted in 3 of 7 fatalities.
 - 31% of crashes occurred along State and US Routes with most of the remainder occurring on County Roads.
 - Pick-up and light trucks accounted for 37% of motor vehicles involved in distracted driving crashes.
 - 41% of crashes occurred at night resulting in 4 fatalities.

NOTE: Fatalities and Serious Injuries in bar graphs indicate persons not crashes. | SOURCES: 2022 CARS data (unofficial at time of report). | DATE GENERATED: 4/24/2023