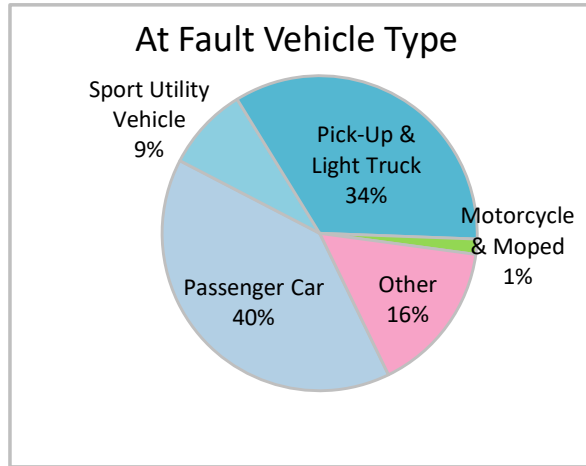
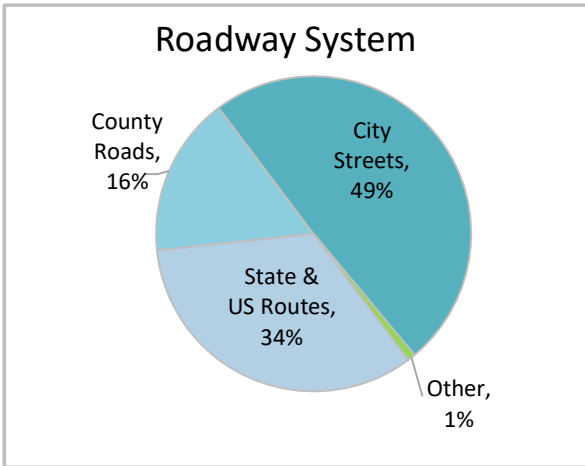
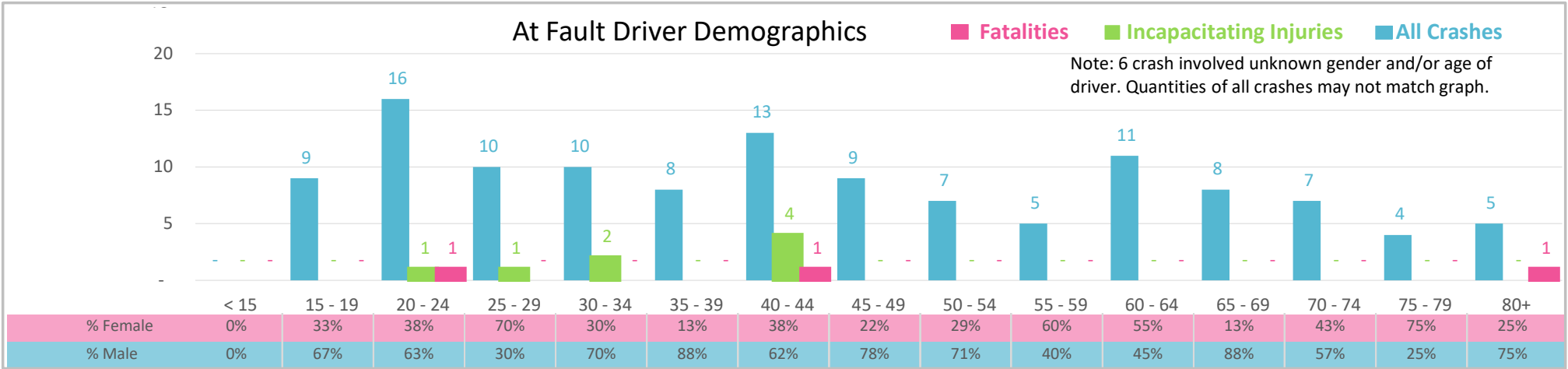




Injury Severity*	Fatal	Incapacitating	Non-Incapacitating	Possible	None/Property Damage Only	TOTAL
Crashes	3	3	14	18	90	128
People Injured	3	8	24	35	NA	70

*NOTE: Crash severity is determined from the highest injury type in the crash (i.e. if a crash had both a fatal and a serious it is determined to be a fatal crash).



- ### Key Intersection Crash Facts
- 2021 population of 21,815.
 - Driver age is distributed broadly across all age groups; male drivers account for 61% of all crashes and resulted in 2 fatalities.
 - Unrestrained occupant was noted as a factor in 9% of crashes and resulted in 1 fatality.
 - Intoxication was noted as a factor in 9 crashes.
 - 49% of crashes occurred along City Streets with most of the remainder occurring on State and US Routes.
 - Passenger car accounted for 40% of motor vehicles involved in intersection crashes.
 - 26% of crashes occurred at night.

NOTE: Fatalities and Serious Injuries in bar graphs indicate persons not crashes. | SOURCES: 2022 CARS data (unofficial at time of report). | DATE GENERATED: 4/27/2023