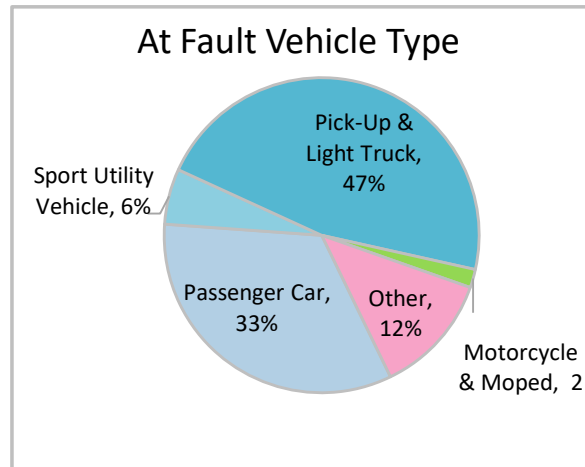
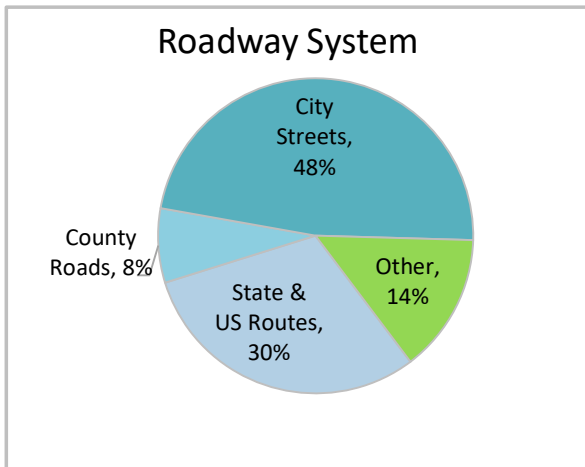
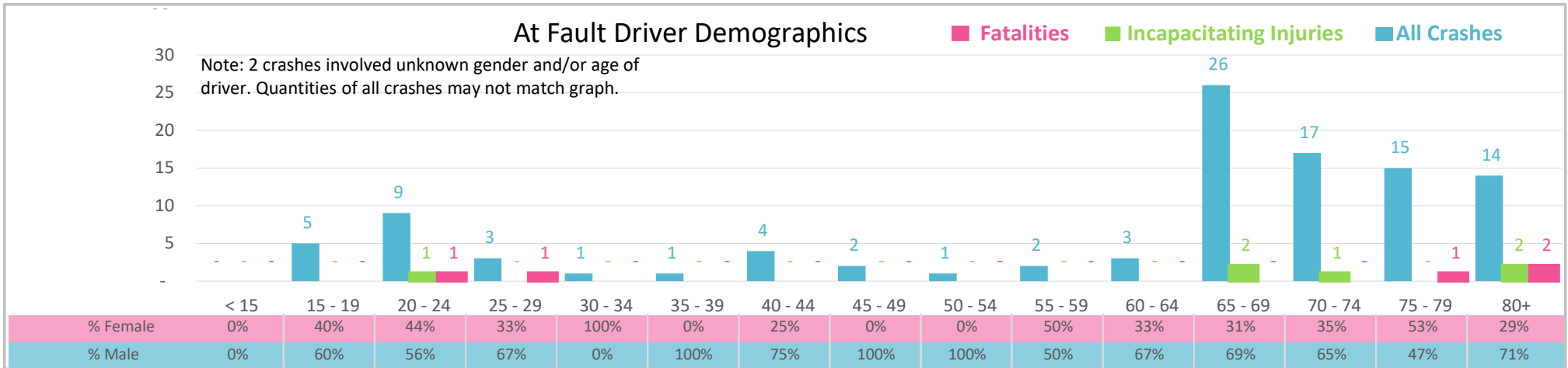




Injury Severity*	Fatal	Incapacitating	Non-Incapacitating	Possible	None/Property Damage Only	TOTAL
Crashes	5	3	7	11	79	105
People Injured	5	6	12	17	NA	40

*NOTE: Crash severity is determined from the highest injury type in the crash (i.e. if a crash had both a fatal and a serious it is determined to be a fatal crash).



- ### Key Aging Road User Crash Facts
- 2021 population of 21,815.
 - 74% of crashes involved drivers 65 and older; male drivers account for 63% of all crashes and resulted in 3 of 5 fatalities.
 - Unrestrained occupant was noted as a factor in 6 crashes and resulted in 2 fatalities.
 - Intoxication was noted as a factor in 3 crashes and resulted in 1 fatality.
 - 48% of crashes occurred along City Streets with most of the remainder occurring on State and US Routes.
 - Pick-up and light truck accounted for 47% of motor vehicles involved in aging driver crashes.
 - 23% of crashes occurred at night resulting in 2 fatalities.

NOTE: Fatalities and Serious Injuries in bar graphs indicate persons not crashes. | SOURCES: 2022 CARS data (unofficial at time of report). | DATE GENERATED: 5/1/2023