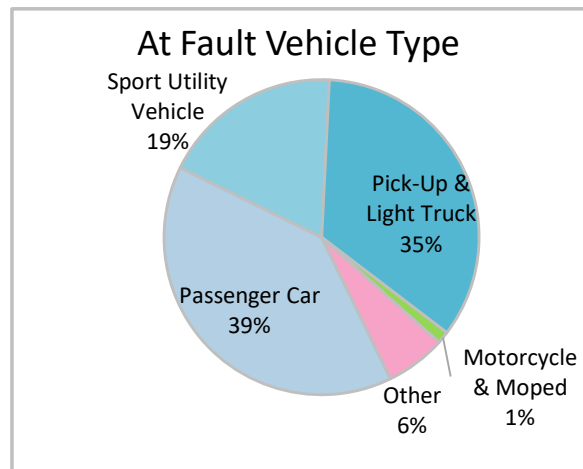
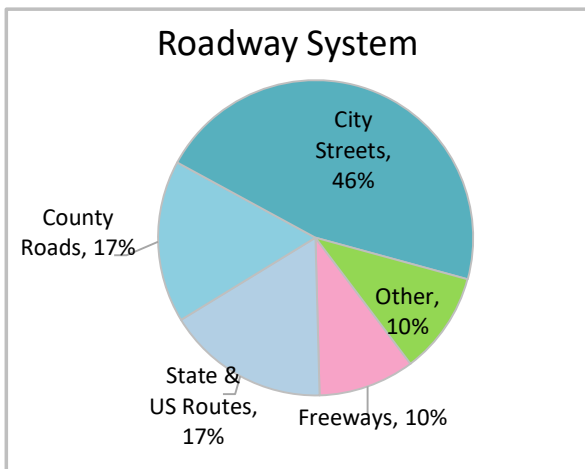
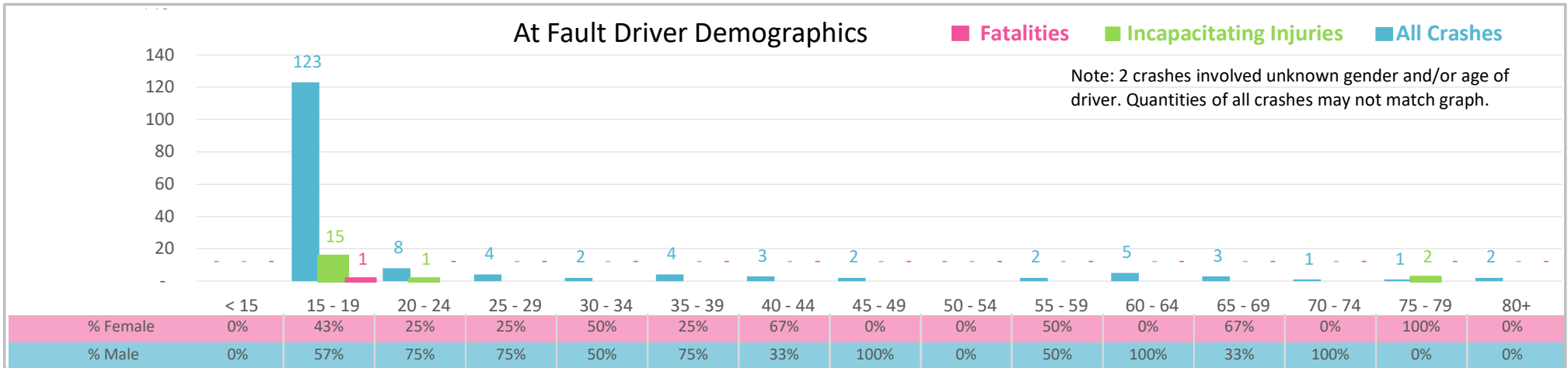




Injury Severity*	Fatal	Incapacitating	Non-Incapacitating	Possible	None/Property Damage Only	TOTAL
Crashes	1	13	14	19	115	162
People Injured	1	18	23	31	NA	73

*NOTE: Crash severity is determined from the highest injury type in the crash (i.e. if a crash had both a fatal and a serious it is determined to be a fatal crash).



- ### Key Teen Driver Crash Facts
- 2021 population of 44,485.
 - 76% of crashes involved drivers under 20; male drivers account for 60% of all crashes and the 1 fatality.
 - Unrestrained occupant was noted as a factor in 8 crashes and resulted in the 1 fatality.
 - Intoxication was noted as a factor in 2 crashes and resulted in the 1 fatality.
 - 46% of crashes occurred along City Streets with most of the remainder occurring on State and US Routes and County Roads.
 - Passenger car accounted for 39% of motor vehicles involved in teen driver crashes.
 - 31% of crashes occurred at night resulting in the 1 fatality.

NOTE: Fatalities and Serious Injuries in bar graphs indicate persons not crashes. | SOURCES: 2022 CARS data (unofficial at time of report). | DATE GENERATED: 5/1/2023