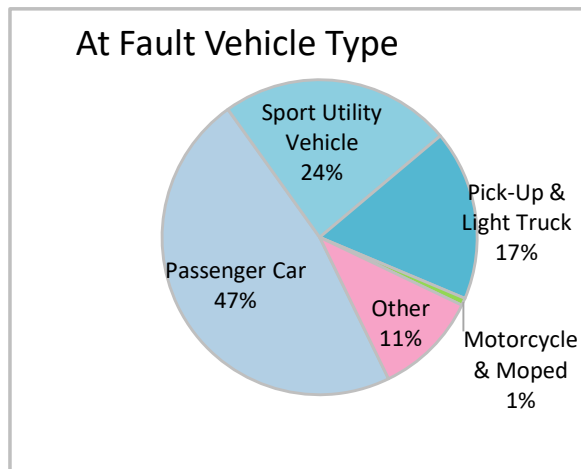
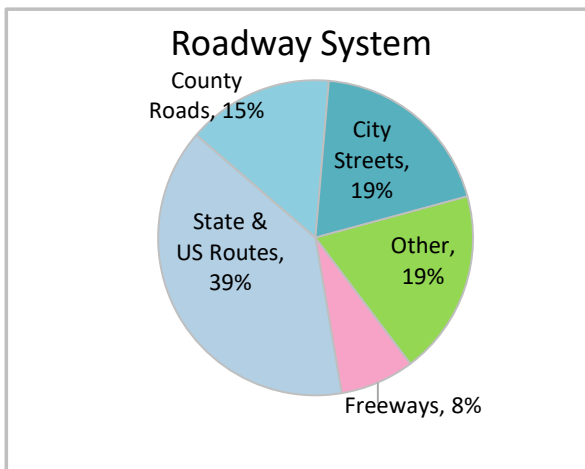
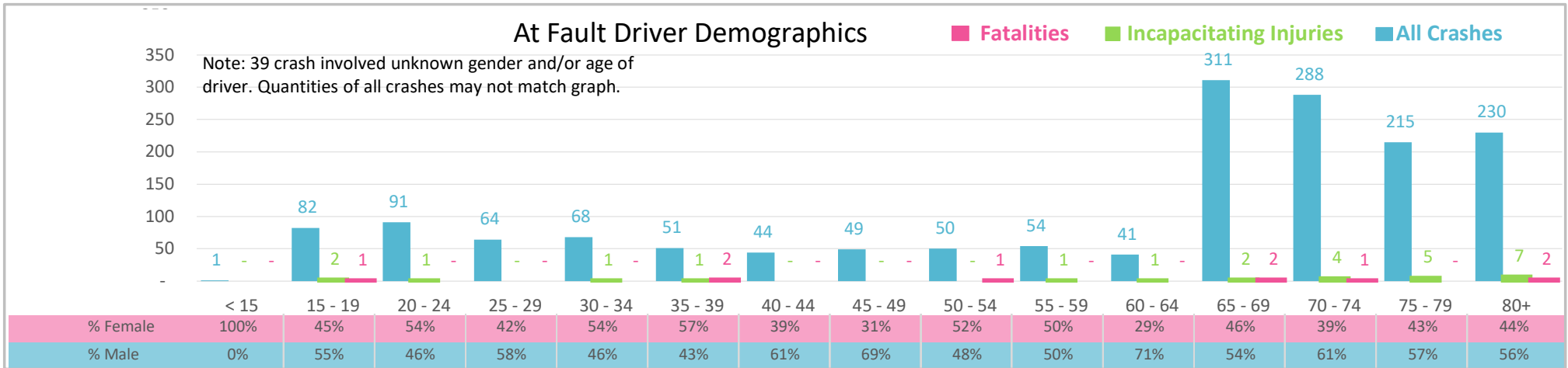




Injury Severity*	Fatal	Incapacitating	Non-Incapacitating	Possible	None/Property Damage Only	TOTAL
Crashes	9	21	142	199	1,307	1,678
People Injured	9	26	189	306	NA	530

*NOTE: Crash severity is determined from the highest injury type in the crash (i.e. if a crash had both a fatal and a serious it is determined to be a fatal crash).



- ### Key Aging Road User Crash Facts
- 2021 population of 292,466.
 - 62% of crashes involved drivers 65 and older; male drivers account for 56% of all crashes and the 9 fatalities.
 - Unrestrained occupant was noted as a factor in 2% of crashes resulting in 2 fatalities.
 - Intoxication was noted as a factor in 2% of crashes and resulted in 2 fatalities.
 - 39% of crashes occurred along State and US Routes with most of the remainder occurring on City Streets and Other roadway systems.
 - Passenger car accounted for 47% of motor vehicles involved in aging driver crashes.
 - 13% of crashes occurred at night resulting in 1 fatality.

NOTE: Fatalities and Serious Injuries in bar graphs indicate persons not crashes. | SOURCES: 2022 CARS data (unofficial at time of report). | DATE GENERATED: 5/1/2023