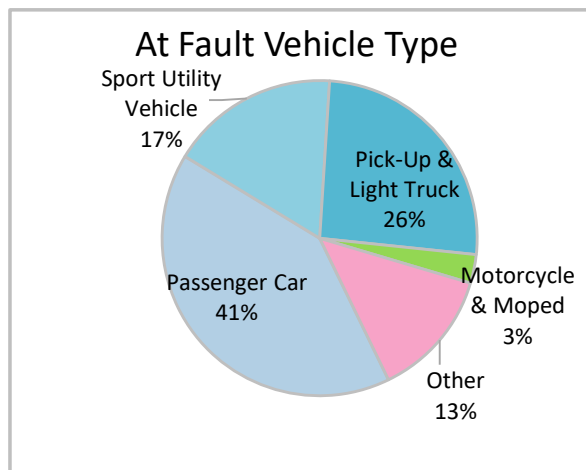
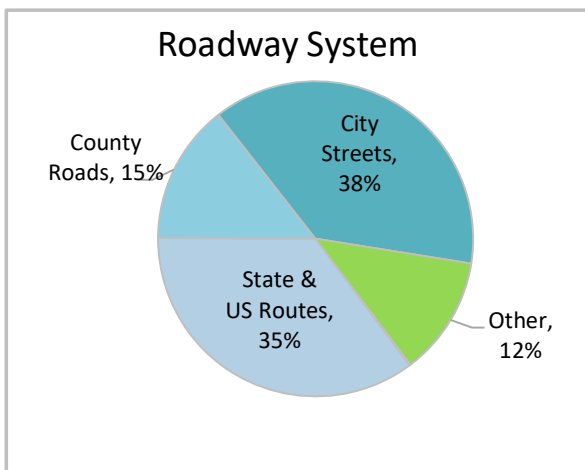
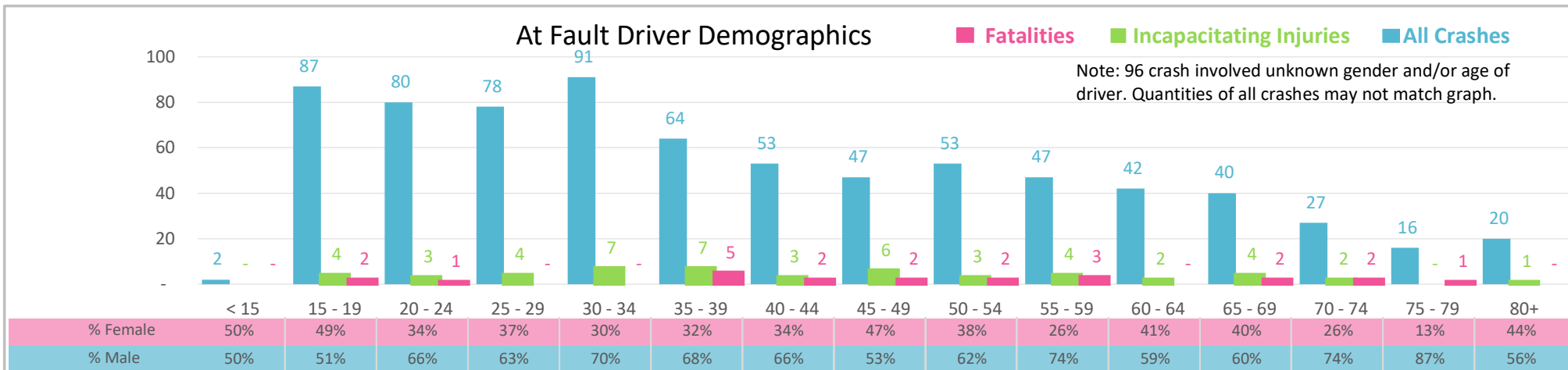




Injury Severity*	Fatal	Incapacitating	Non-Incapacitating	Possible	None/Property Damage Only	TOTAL
Crashes	21	39	102	102	579	843
People Injured	22	52	144	157	NA	375

*NOTE: Crash severity is determined from the highest injury type in the crash (i.e. if a crash had both a fatal and a serious it is determined to be a fatal crash).



- ### Key Lane Departure Crash Facts
- 2021 population of 74,167.
 - 40% of crashes involved drivers under 35; male drivers account for 64% of all crashes and 90% of fatalities.
 - Unrestrained occupant was noted as a factor in 9% of crashes and resulted in 55% fatalities.
 - Intoxication was noted as a factor in 9% of crashes and resulted in the 8 fatalities.
 - 38% of crashes occurred along City Streets with most of the remainder occurring on State and US Routes.
 - Passenger car accounted for 41% of motor vehicles involved in lane departure crashes.
 - 42% of crashes occurred at night resulting in 7 fatalities.

NOTE: Fatalities and Serious Injuries in bar graphs indicate persons not crashes. | SOURCES: 2022 CARS data (unofficial at time of report). | DATE GENERATED: 4/24/2023