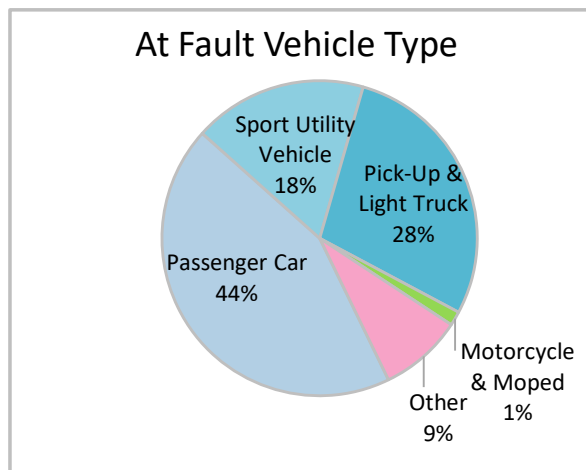
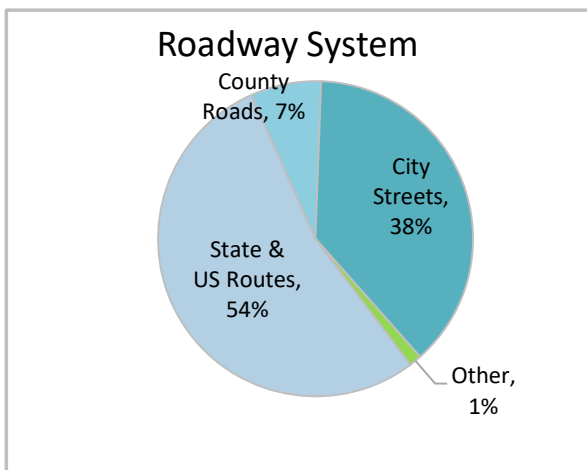
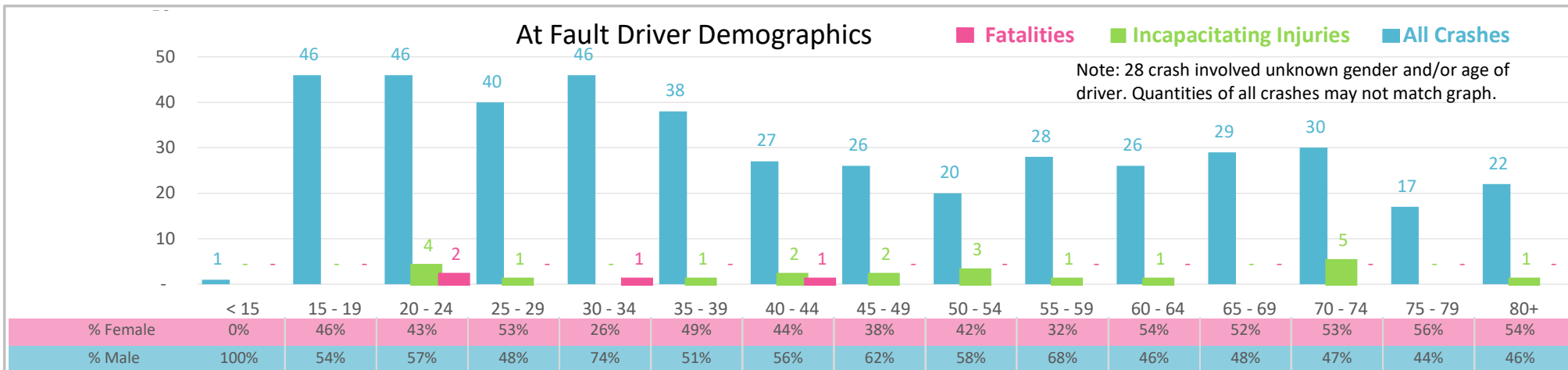




Injury Severity*	Fatal	Incapacitating	Non-Incapacitating	Possible	None/Property Damage Only	TOTAL
Crashes	4	15	66	67	318	470
People Injured	4	21	103	134	NA	262

\*NOTE: Crash severity is determined from the highest injury type in the crash (i.e. if a crash had both a fatal and a serious it is determined to be a fatal crash).



- ### Key Intersection Crash Facts
- 2021 population of 74,167.
  - 46% of crashes involved drivers under 40; male drivers account for 55% of all crashes and the 4 fatalities.
  - Unrestrained occupant was noted as a factor in 6% of crashes and resulted in 2 fatalities.
  - Intoxication was noted as a factor in 4% of crashes and resulted in 1 fatality.
  - 54% of crashes occurred along State and US Routes with most of the remainder occurring on City Streets.
  - Passenger car accounted for 44% of motor vehicles involved in intersection crashes.
  - 29% of crashes occurred at night resulting in 2 fatalities.

NOTE: Fatalities and Serious Injuries in bar graphs indicate persons not crashes. | SOURCES: 2022 CARS data (unofficial at time of report). | DATE GENERATED: 4/27/2023