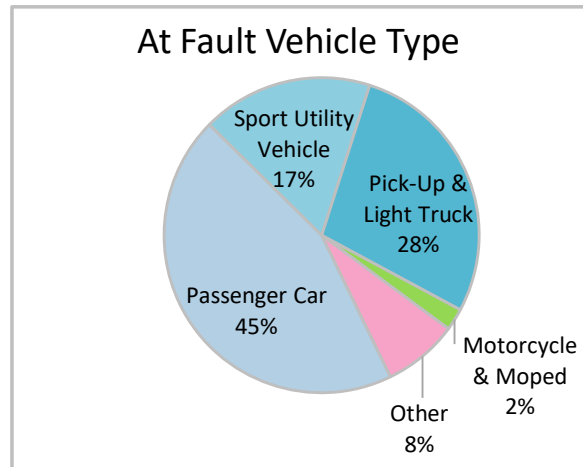
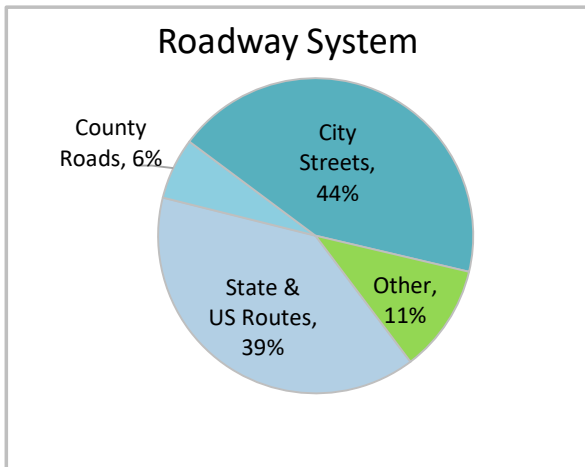
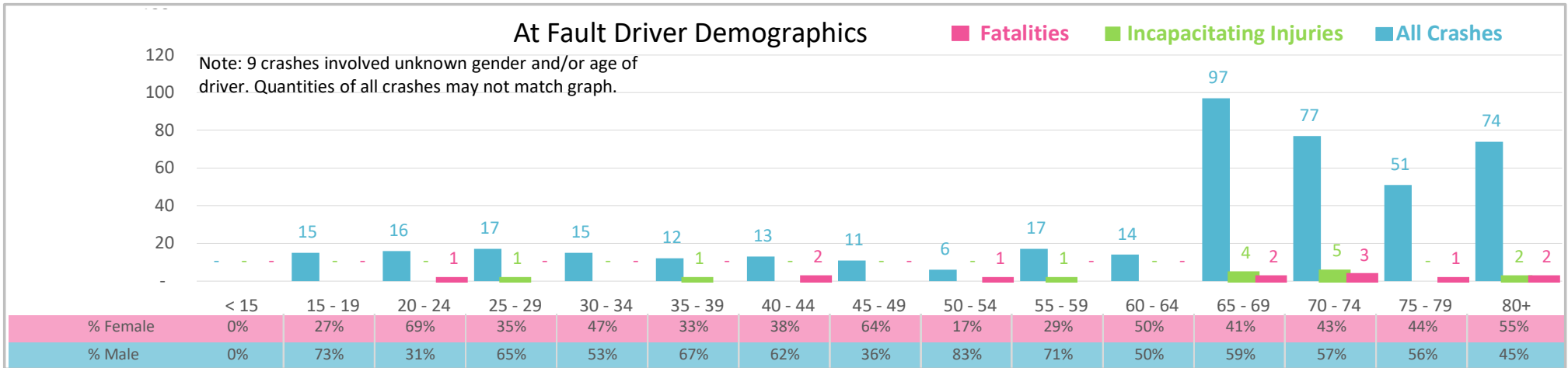




| Injury Severity* | Fatal | Incapacitating | Non-Incapacitating | Possible | None/Property Damage Only | TOTAL |
|------------------|-------|----------------|--------------------|----------|---------------------------|-------|
| Crashes | 12 | 13 | 45 | 59 | 315 | 444 |
| People Injured | 12 | 14 | 83 | 94 | NA | 203 |

*NOTE: Crash severity is determined from the highest injury type in the crash (i.e. if a crash had both a fatal and a serious it is determined to be a fatal crash).



- ### Key Aging Road User Crash Facts
- 2021 population of 74,167.
 - 67% of crashes involved drivers 65 and older; male drivers account for 56% of all crashes and 11 of 12 fatalities.
 - Unrestrained occupant was noted as a factor in 5% of crashes and resulted in 2 fatalities.
 - Intoxication was noted as a factor in 3% of crashes and resulted in 2 fatalities.
 - 44% of crashes occurred along City Streets with most of the remainder occurring on State and US Routes.
 - Passenger car accounted for 45% of motor vehicles involved in aging driver crashes.
 - 12% of crashes occurred at night resulting in 1 fatality.

NOTE: Fatalities and Serious Injuries in bar graphs indicate persons not crashes. | SOURCES: 2022 CARS data (unofficial at time of report). | DATE GENERATED: 5/1/2023