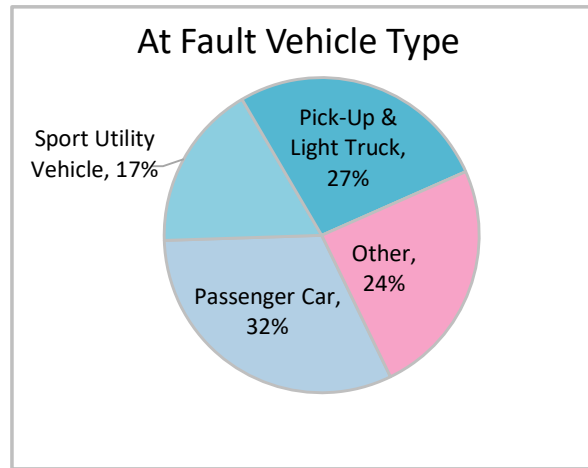
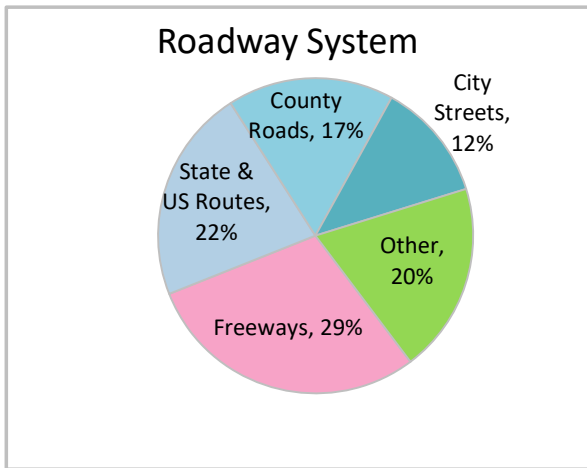
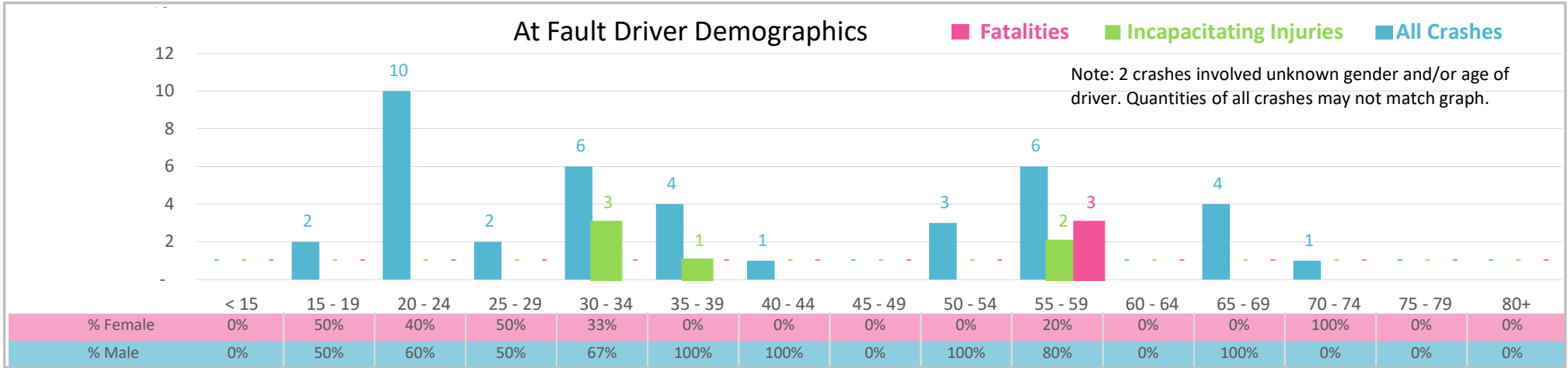




Injury Severity*	Fatal	Incapacitating	Non-Incapacitating	Possible	None/Property Damage Only	TOTAL
Crashes	1	5	15	4	16	41
People Injured	2	5	12	7	NA	26

*NOTE: Crash severity is determined from the highest injury type in the crash (i.e. if a crash had both a fatal and a serious it is determined to be a fatal crash).



- ### Key Occupant Protection Crash Facts
- 2021 population of 18,288.
 - Driver age is distributed broadly across all age groups under 60; male drivers account for 74% of all crashes and 3 fatalities.
 - Intoxication was noted as a factor in 2 crashes.
 - 29% of crashes occurred along Freeways with most of the remainder occurring on State and US Routes.
 - Passenger car accounted for 32% of motor vehicles involved in occupant protection crashes.
 - 54% of crashes occurred at night.