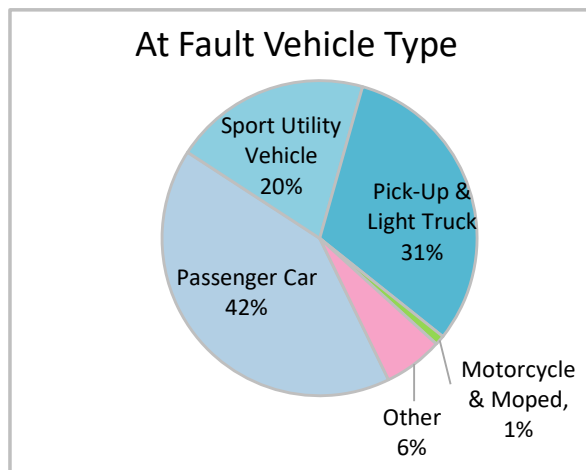
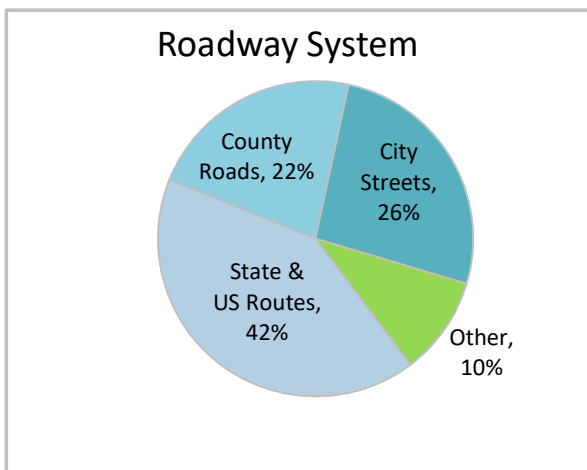
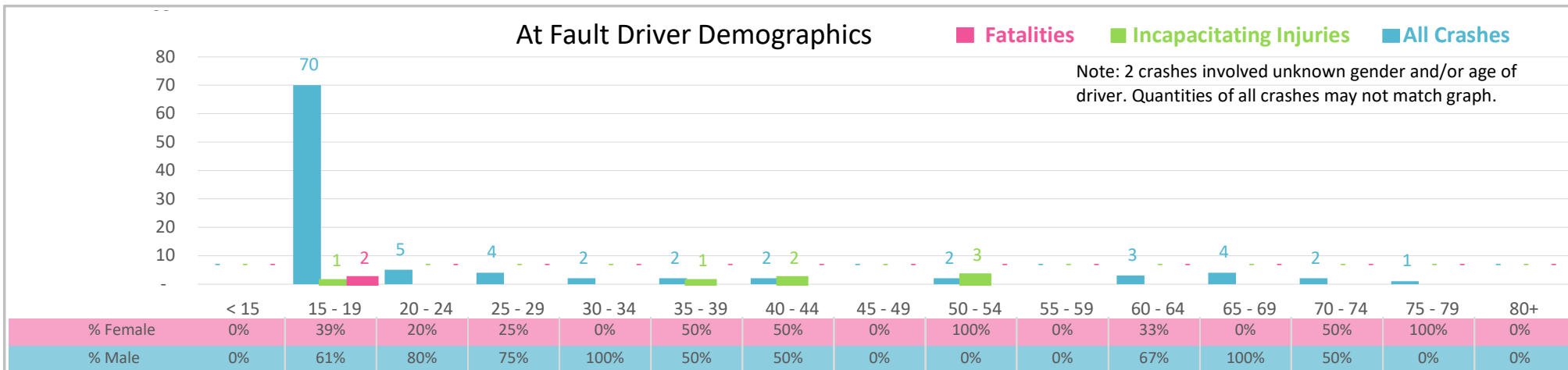




Injury Severity*	Fatal	Incapacitating	Non-Incapacitating	Possible	None/Property Damage Only	TOTAL
Crashes	2	4	16	13	64	99
People Injured	2	7	23	27	NA	59

\*NOTE: Crash severity is determined from the highest injury type in the crash (i.e. if a crash had both a fatal and a serious it is determined to be a fatal crash).



- ### Key Teen Driver Crash Facts
- 2021 population of 44,158.
  - 71% of crashes involved drivers under 20; male drivers account for 63% of all crashes and 1 of 2 fatalities.
  - Unrestrained occupant was noted as a factor in 5 crashes and resulted in 1 fatality.
  - Intoxication was noted as a factor in 4% of crashes and resulted in 1 fatality.
  - 42% of crashes occurred along State and US Routes with most of the remainder occurring on City Streets.
  - Passenger car accounted for 42% of motor vehicles involved in teen driver crashes.
  - 34% of crashes occurred at night.

NOTE: Fatalities and Serious Injuries in bar graphs indicate persons not crashes. | SOURCES: 2022 CARS data (unofficial at time of report). | DATE GENERATED: 5/1/2023