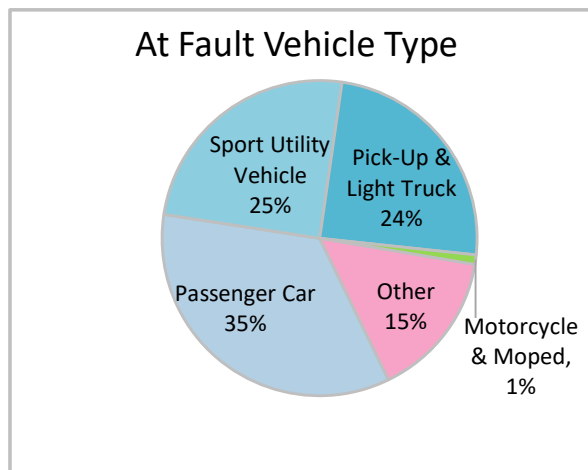
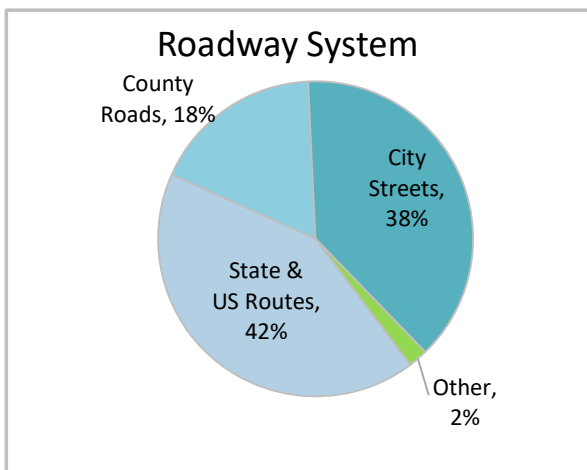
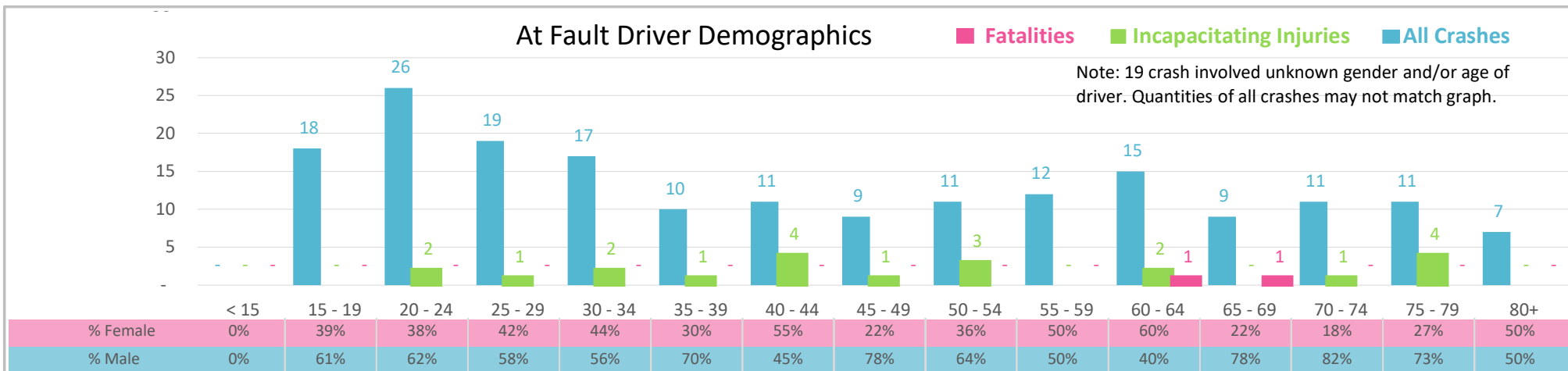




Injury Severity*	Fatal	Incapacitating	Non-Incapacitating	Possible	None/Property Damage Only	TOTAL
Crashes	2	15	34	35	119	205
People Injured	2	21	62	82	NA	167

*NOTE: Crash severity is determined from the highest injury type in the crash (i.e. if a crash had both a fatal and a serious it is determined to be a fatal crash).



- ### Key Intersection Crash Facts
- 2021 population of 44,158.
 - 44% of crashes involved drivers under 40; male drivers account for 61% of all crashes and the 2 fatalities.
 - Unrestrained occupant was noted as a factor in 8% of crashes and resulted in 1 fatality.
 - Intoxication was noted as a factor in 5% crashes and resulted in 1 fatality.
 - 42% of crashes occurred along State and US Routes with most of the remainder occurring on City Streets.
 - Passenger car accounted for 35% of motor vehicles involved in intersection crashes.
 - 27% of crashes occurred at night resulting in 1 fatality.

NOTE: Fatalities and Serious Injuries in bar graphs indicate persons not crashes. | SOURCES: 2022 CARS data (unofficial at time of report). | DATE GENERATED: 4/27/2023