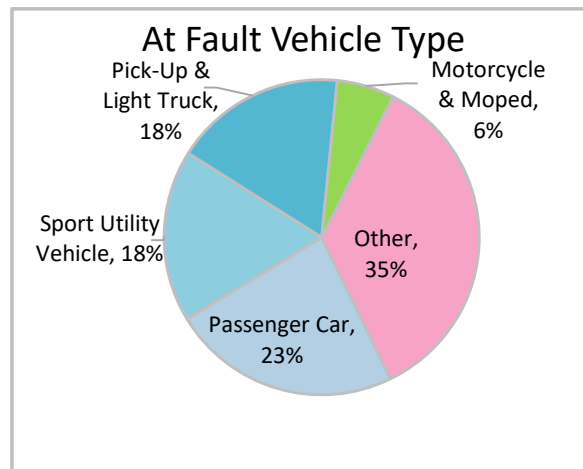
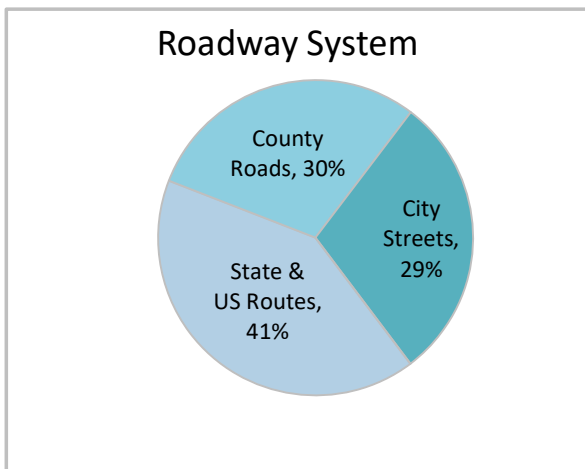
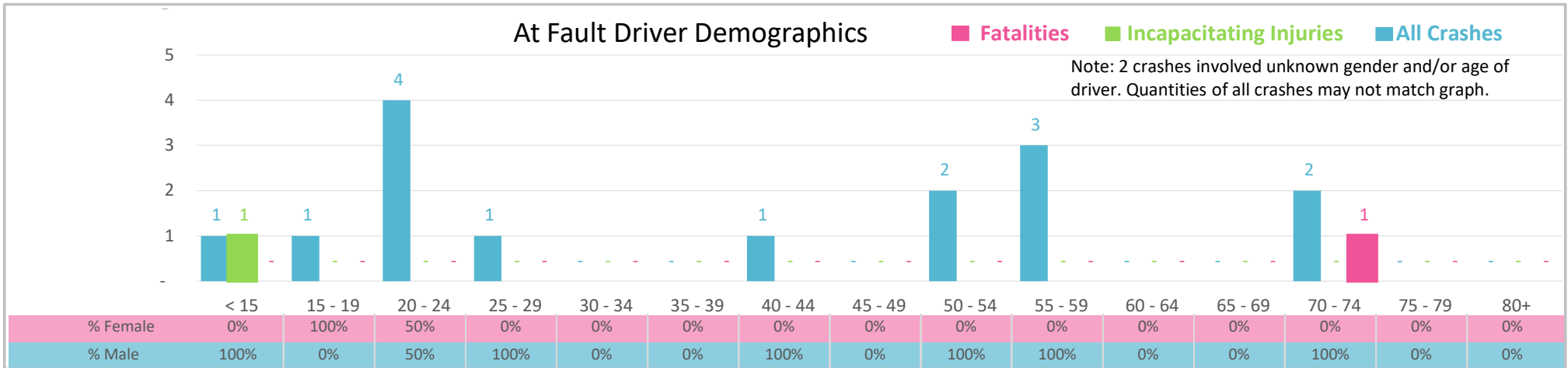




Injury Severity*	Fatal	Incapacitating	Non-Incapacitating	Possible	None/Property Damage Only	TOTAL
Crashes	1	1	1	5	9	17
People Injured	1	1	2	6	NA	10

*NOTE: Crash severity is determined from the highest injury type in the crash (i.e. if a crash had both a fatal and a serious it is determined to be a fatal crash).



- ### Key Intersection Crash Facts
- 2021 population of 8,382.
 - 41% of crashes involved drivers under 30; male drivers accounted for 80% of crashes and the 1 fatality.
 - Unrestrained occupant was not noted as a factor in any of crashes.
 - Intoxication was noted as a factor in 1 crash.
 - 41% of crashes occurred along State & US Routes with most of the remainder occurring on County Roads.
 - Other vehicle type accounted for 35% of motor vehicles involved in intersection crashes.
 - 59% of crashes occurred at night.

NOTE: Fatalities and Serious Injuries in bar graphs indicate persons not crashes. | SOURCES: 2022 CARS data (unofficial at time of report). | DATE GENERATED: 4/27/2023