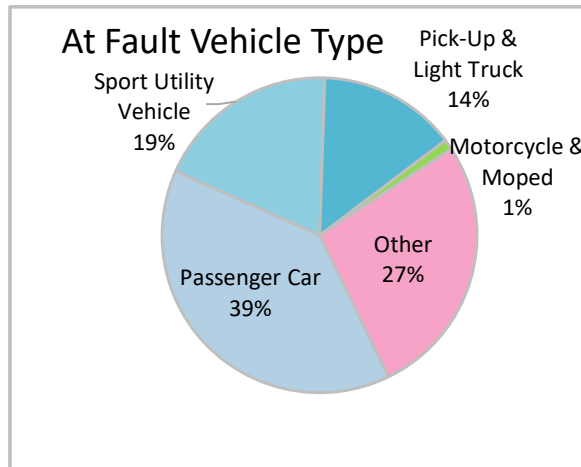
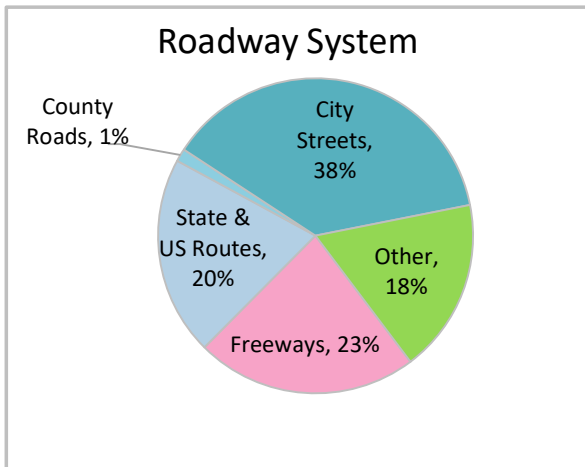
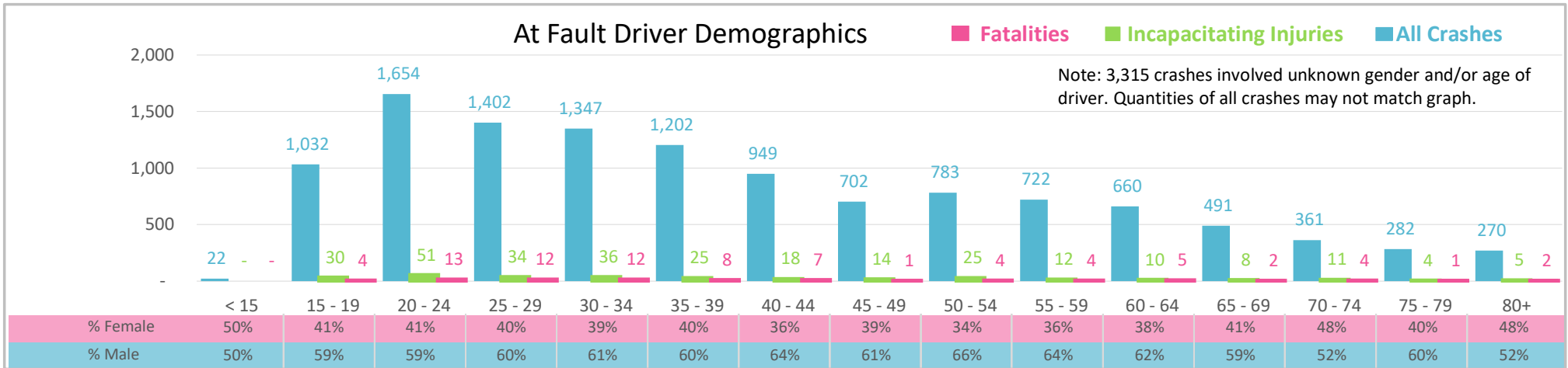




Injury Severity*	Fatal	Incapacitating	Non-Incapacitating	Possible	None/Property Damage Only	TOTAL
Crashes	75	243	1,121	1,772	11,983	15,194
People Injured	80	298	1,464	2,754	NA	4,596

*NOTE: Crash severity is determined from the highest injury type in the crash (i.e. if a crash had both a fatal and a serious it is determined to be a fatal crash).



- ### Key Lane Departure Crash Facts
- 2021 population of 999,935.
 - Driver age is distributed broadly across all age groups under 45; male drivers account for 61% of all crashes and 78% of fatalities.
 - Unrestrained occupant was noted as a factor in 3% of crashes and resulted in 45% of fatalities.
 - Intoxication was noted as a factor in 4% of crashes and resulted in 40% of fatalities.
 - 38% of crashes occurred along City Streets with most of the remainder occurring on Freeways.
 - Passenger car accounted for 39% of motor vehicles involved in lane departure crashes.
 - 31% of crashes occurred at night resulting in 66% of fatalities.

NOTE: Fatalities and Serious Injuries in bar graphs indicate persons not crashes. | SOURCES: 2022 CARS data (unofficial at time of report). | DATE GENERATED: 4/24/2023