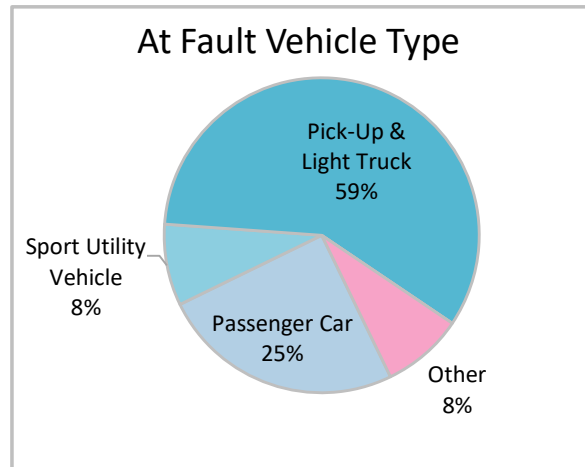
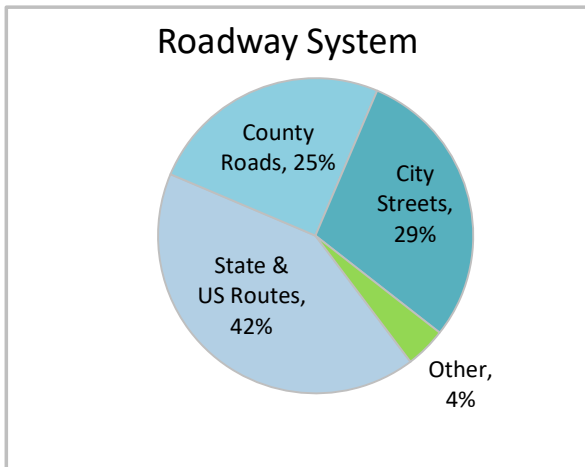
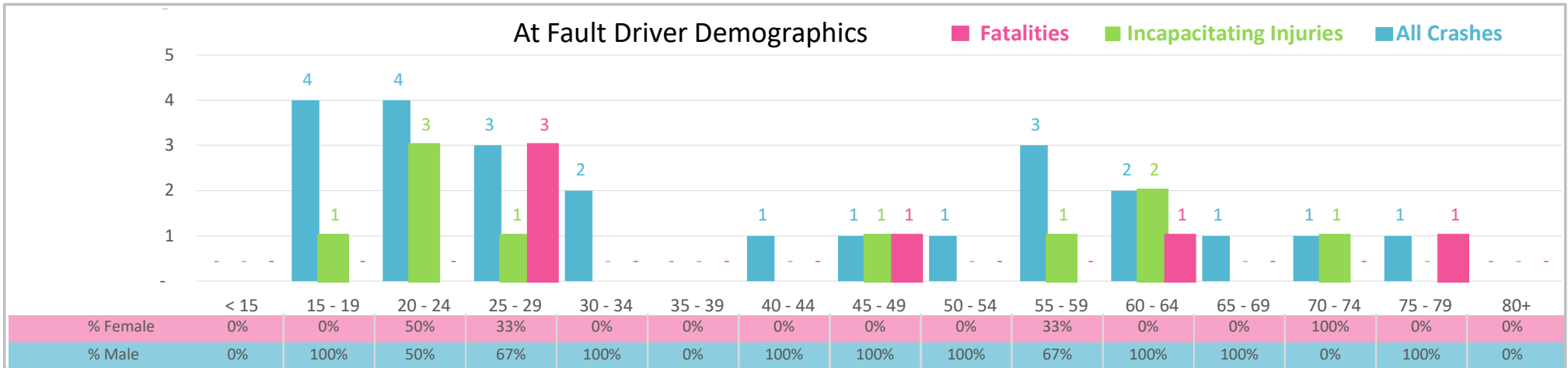




Injury Severity*	Fatal	Incapacitating	Non-Incapacitating	Possible	None/Property Damage Only	TOTAL
Crashes	5	5	7	4	3	24
People Injured	6	10	11	8	NA	35

\*NOTE: Crash severity is determined from the highest injury type in the crash (i.e. if a crash had both a fatal and a serious it is determined to be a fatal crash).



- ### Key Occupant Protection Crash Facts
- 2021 population of 17,102.
  - 46% of crashes involved drivers under 30; male drivers account for 77% of all crashes and 5 fatalities.
  - Intoxication was noted as a factor in 6 crashes and resulted in 3 fatalities.
  - 42% of crashes occurred along State and US Routes with most of the remainder occurring on City Streets.
  - Pick-up and light truck accounted for 59% of motor vehicles involved in occupant protection crashes.
  - 54% of crashes occurred at night resulting in 4 fatalities.

NOTE: Fatalities and Serious Injuries in bar graphs indicate persons not crashes. | SOURCES: 2022 CARS data (unofficial at time of report). | DATE GENERATED: 4/5/2023