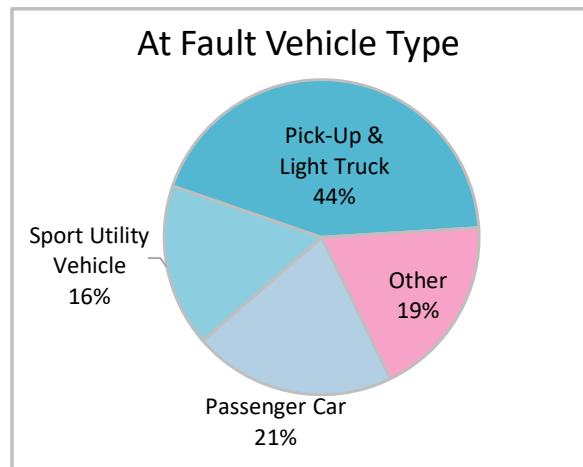
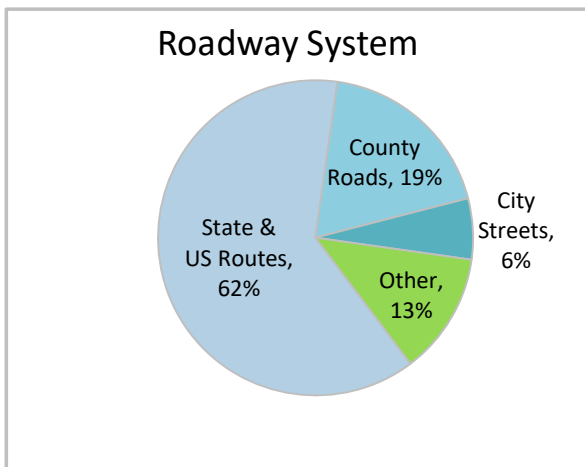
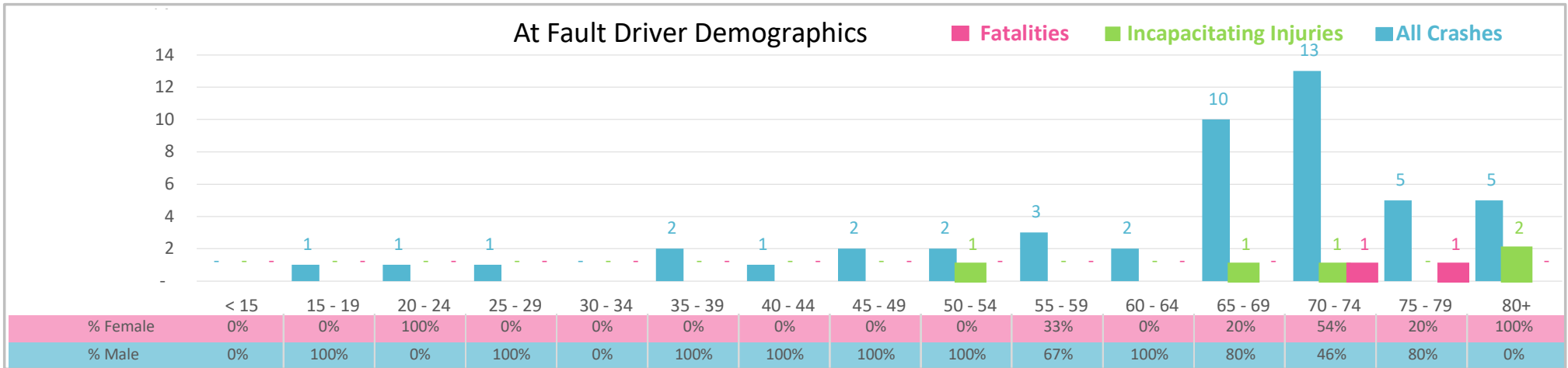




Injury Severity*	Fatal	Incapacitating	Non-Incapacitating	Possible	None/Property Damage Only	TOTAL
Crashes	2	4	4	9	29	48
People Injured	2	5	7	15	NA	29

*NOTE: Crash severity is determined from the highest injury type in the crash (i.e. if a crash had both a fatal and a serious it is determined to be a fatal crash).



- ### Key Aging Road User Crash Facts
- 2021 population of 17,102.
 - 69% of crashes involved drivers 65 and older; male drivers account for 69% of all crashes and 1 of 2 fatalities.
 - Unrestrained occupant was noted as a factor in 4 crashes resulting in 1 fatality.
 - Intoxication was not noted as a factor in any of the crashes.
 - 62% of crashes occurred along State and US Routes with most of the remainder occurring on County Roads.
 - Pick-up and light truck accounted for 44% of motor vehicles involved in aging driver crashes.
 - 17% of crashes occurred at night.

NOTE: Fatalities and Serious Injuries in bar graphs indicate persons not crashes. | SOURCES: 2022 CARS data (unofficial at time of report). | DATE GENERATED: 5/1/2023