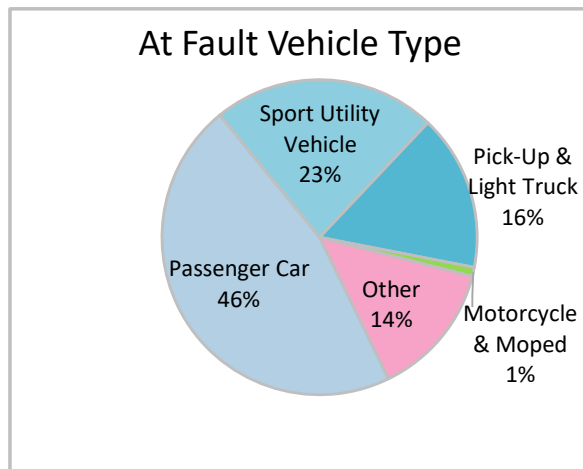
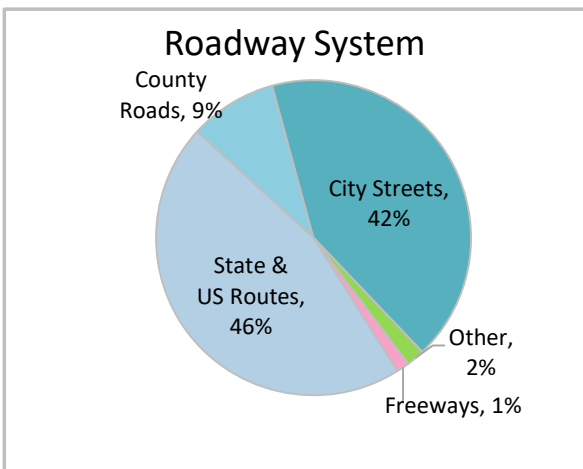
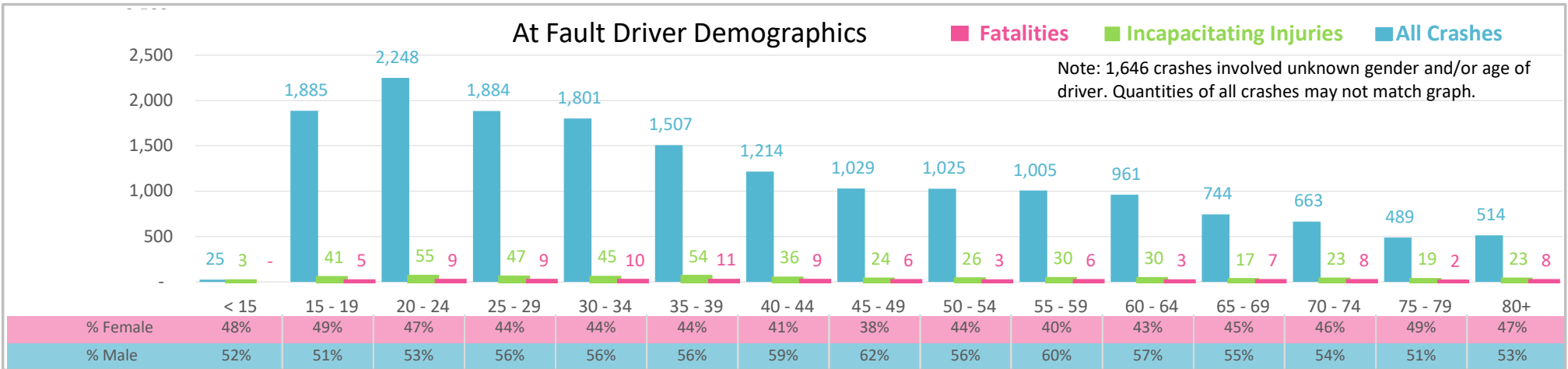




| Injury Severity*      | Fatal | Incapacitating | Non-Incapacitating | Possible | None/Property Damage Only | TOTAL         |
|-----------------------|-------|----------------|--------------------|----------|---------------------------|---------------|
| <b>Crashes</b>        | 93    | 379            | 2,193              | 3,966    | 12,009                    | <b>18,640</b> |
| <b>People Injured</b> | 98    | 481            | 3,136              | 6,836    | NA                        | <b>10,551</b> |

\*NOTE: Crash severity is determined from the highest injury type in the crash (i.e. if a crash had both a fatal and a serious it is determined to be a fatal crash).



- ### Key Intersection Crash Facts
- 2021 population of 2,292,914.
  - 50% of crashes caused by drivers under 40; male drivers account for 56% of all crashes and 73% of fatalities.
  - Unrestrained occupant was noted as a factor in 3% of crashes and resulted in 27% of fatalities.
  - Intoxication was noted as a factor in 3% of crashes and resulted in 28% of fatalities.
  - 46% of crashes occurred along State and US Routes with most of the remainder occurring on City Streets.
  - Passenger car accounted for 46% of motor vehicles involved in intersection crashes.
  - 26% of crashes occurred at night with 56% of fatalities.

NOTE: Fatalities and Serious Injuries in bar graphs indicate persons not crashes. | SOURCES: 2022 CARS data (unofficial at time of report). | DATE GENERATED: 4/27/2023