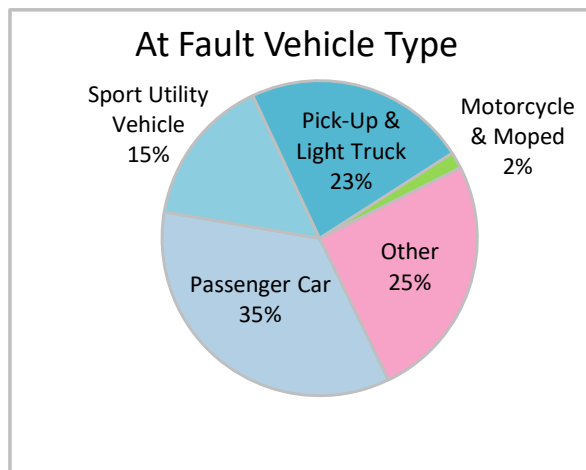
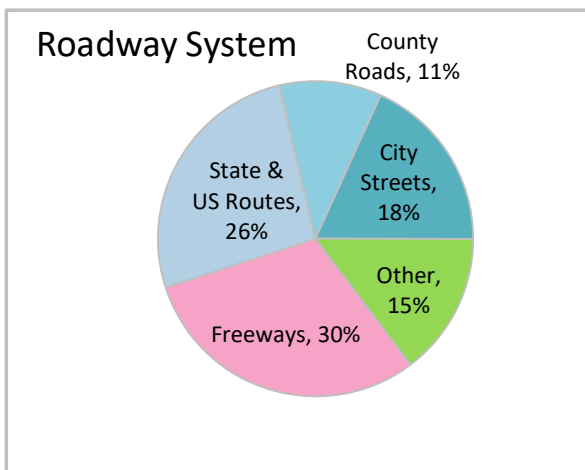
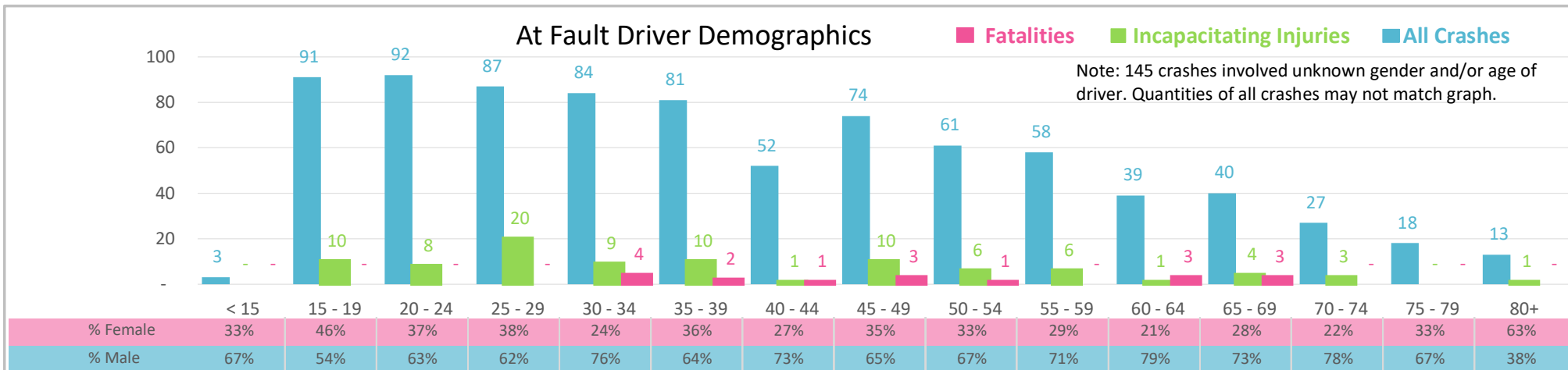




Injury Severity*	Fatal	Incapacitating	Non-Incapacitating	Possible	None/Property Damage Only	TOTAL
Crashes	16	72	112	90	675	965
People Injured	17	91	162	165	NA	435

*NOTE: Crash severity is determined from the highest injury type in the crash (i.e. if a crash had both a fatal and a serious it is determined to be a fatal crash).



- ### Key Lane Departure Crash Facts
- 2021 population of 70,385.
 - Driver age is distributed broadly across all age groups under 50; male drivers account for 67% of all crashes and 76% of fatalities.
 - Unrestrained occupant was noted as a factor in 9% of crashes and resulted in 7 fatalities.
 - Intoxication was noted as a factor in 8% of crashes and resulted in 3 fatalities.
 - 30% of crashes occurred along Freeways with most of the remainder occurring on State and US Routes.
 - Passenger car accounted for 35% of motor vehicles involved in lane departure crashes.
 - 38% of crashes occurred at night resulting in 82% of fatalities.

NOTE: Fatalities and Serious Injuries in bar graphs indicate persons not crashes. | SOURCES: 2022 CARS data (unofficial at time of report). | DATE GENERATED: 4/24/2023