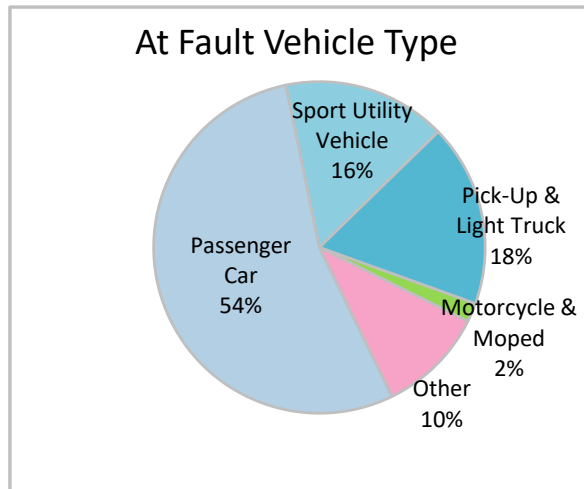
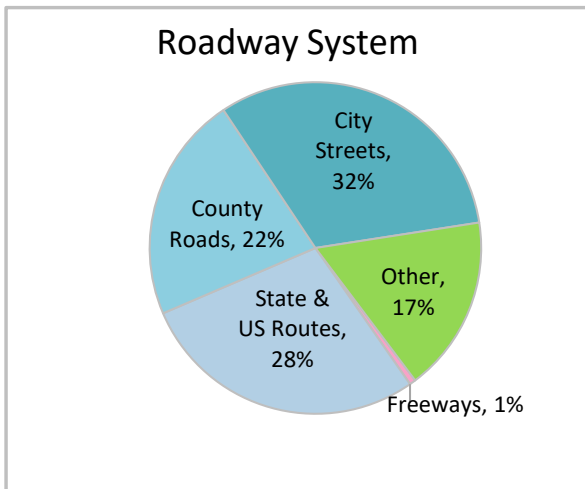
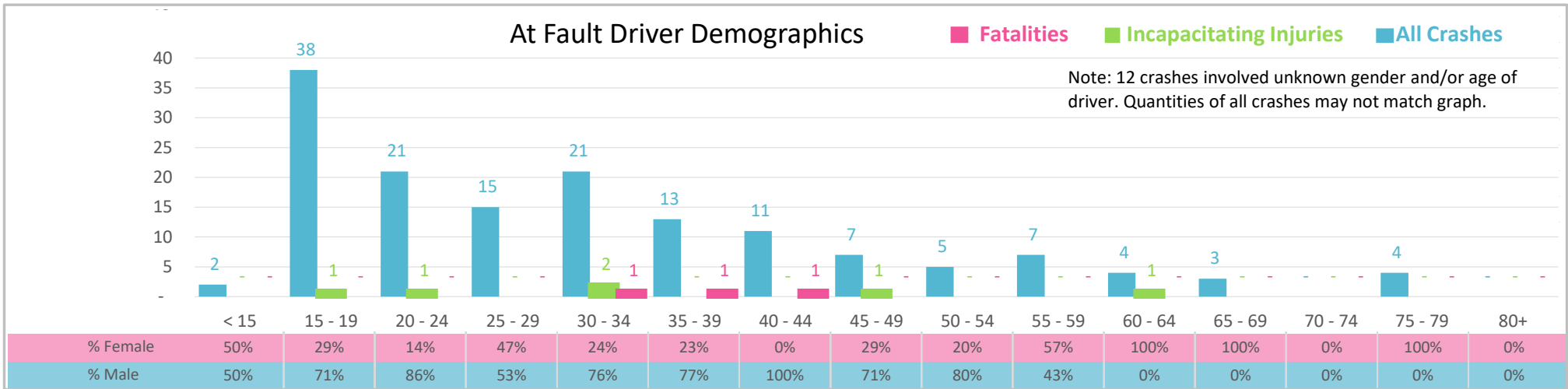




| Injury Severity* | Fatal | Incapacitating | Non-Incapacitating | Possible | None/Property Damage Only | TOTAL |
|-----------------------|-------|----------------|--------------------|----------|---------------------------|------------|
| Crashes | 3 | 4 | 21 | 27 | 108 | 163 |
| People Injured | 3 | 6 | 25 | 41 | NA | 75 |

*NOTE: Crash severity is determined from the highest injury type in the crash (i.e. if a crash had both a fatal and a serious it is determined to be a fatal crash).



- ### Key Aggressive Driving Crash Facts
- 2021 population of 222,361.
 - 60% of crashes involved drivers under 30; male drivers account for 68% of all crashes and 3 fatalities.
 - Unrestrained occupant was noted as a factor in 10% of crashes and resulted in 3 fatalities.
 - Intoxication was noted as a factor in 9% of crashes and resulted in 2 fatalities.
 - 32% of crashes occurred along City Streets with most of the remainder occurring on State and US Routes.
 - Passenger car accounted for 54% of motor vehicles involved in aggressive driving crashes.
 - 44% of crashes occurred at night with 3 fatalities.