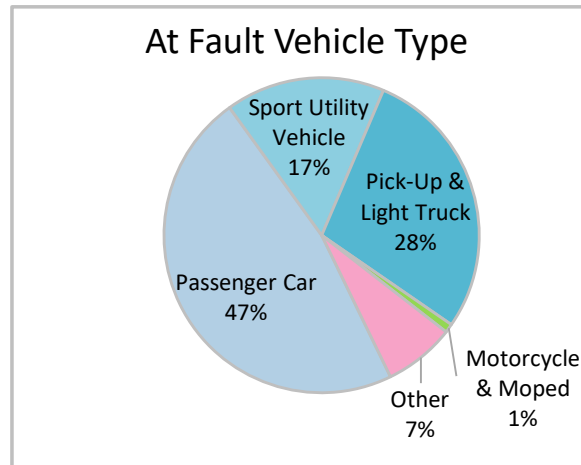
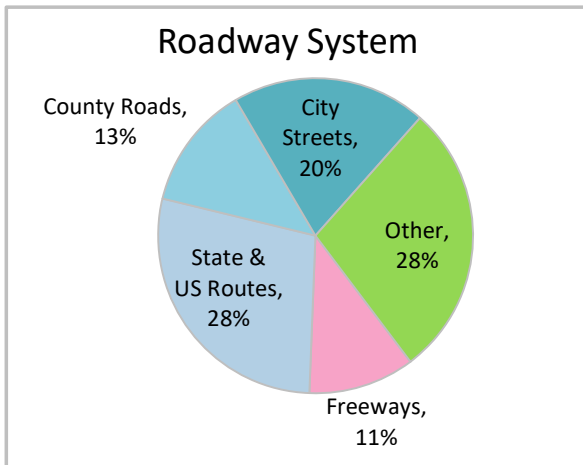
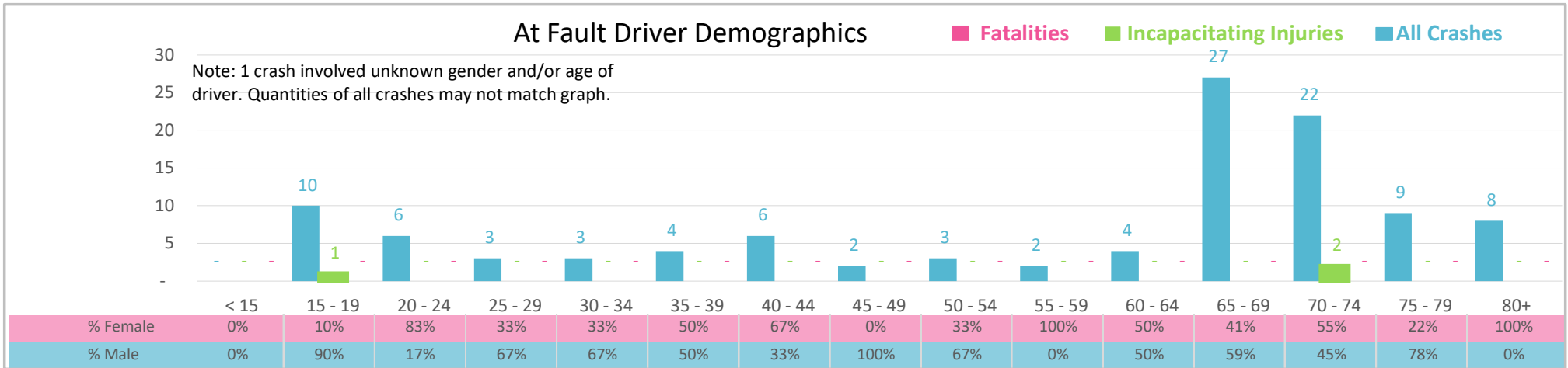




Injury Severity*	Fatal	Incapacitating	Non-Incapacitating	Possible	None/Property Damage Only	TOTAL
Crashes	0	3	7	12	88	110
People Injured	0	3	10	25	NA	38

*NOTE: Crash severity is determined from the highest injury type in the crash (i.e. if a crash had both a fatal and a serious it is determined to be a fatal crash).



- ### Key Aging Road User Crash Facts
- 2021 population of 28,715.
 - 60% of crashes caused by drivers 65 and older; male drivers account for 54% of all crashes.
 - Unrestrained occupant was noted as a factor in 3 crashes.
 - Intoxication was not noted as a factor in any of the crashes.
 - Crashes occurred mostly distributed along all roadway systems with highest on State and US Routes and Other roadway systems, 28%.
 - Passenger car accounted for 47% of motor vehicles involved in aging driver crashes.
 - 5% of crashes occurred at night.

NOTE: Fatalities and Serious Injuries in bar graphs indicate persons not crashes. | SOURCES: 2022 CARS data (unofficial at time of report). | DATE GENERATED: 5/1/2023