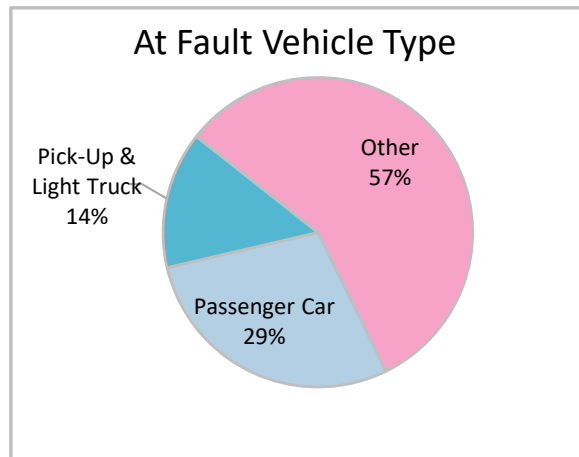
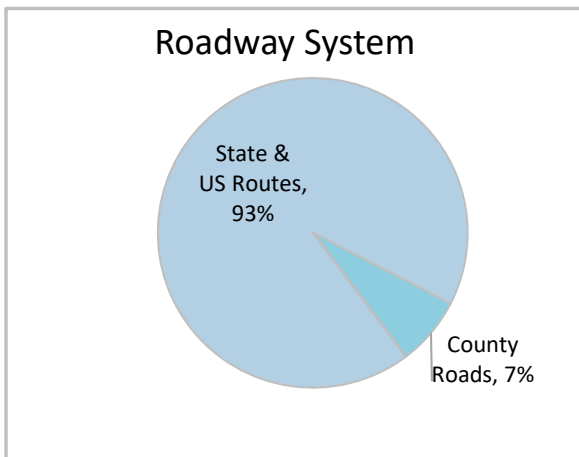
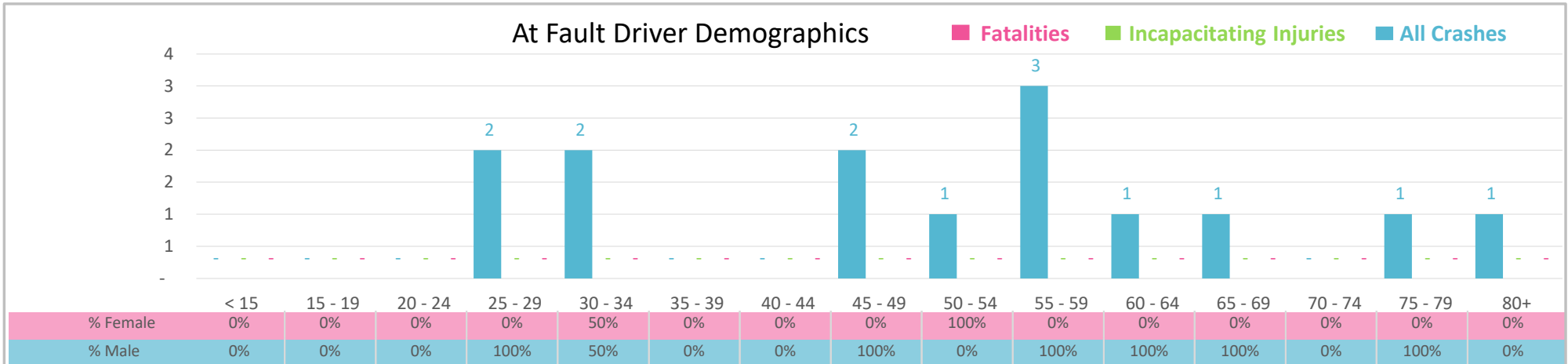




Injury Severity*	Fatal	Incapacitating	Non-Incapacitating	Possible	None/Property Damage Only	TOTAL
<b>Crashes</b>	0	0	2	7	5	<b>14</b>
<b>People Injured</b>	0	0	3	9	NA	<b>12</b>

\*NOTE: Crash severity is determined from the highest injury type in the crash (i.e. if a crash had both a fatal and a serious it is determined to be a fatal crash).



- ### Key Commercial Motor Vehicle Crash Facts
- 2021 population of 16,335.
  - Driver age is distributed broadly across all age groups; male drivers account for 86% of all crashes.
  - Unrestrained occupant was noted as a factor in 3 crashes.
  - Intoxication was not noted as a factor in any of the crashes.
  - 93% of crashes occurred along State and US Routes with the remainder occurring on County Roads.
  - Other vehicle type accounted for 57% of motor vehicles involved in commercial vehicle crashes.
  - 29% of crashes occurred at night.

NOTE: Fatalities and Serious Injuries in bar graphs indicate persons not crashes. | SOURCES: 2022 CARS data (unofficial at time of report). | DATE GENERATED: 4/3/2023