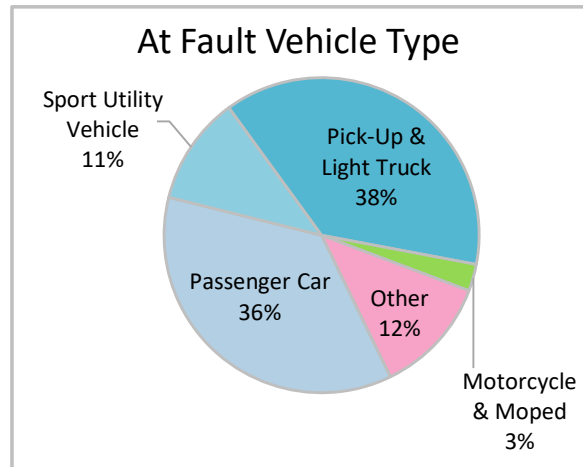
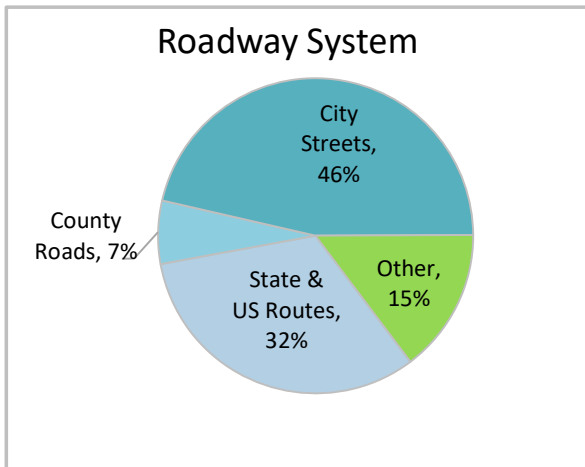
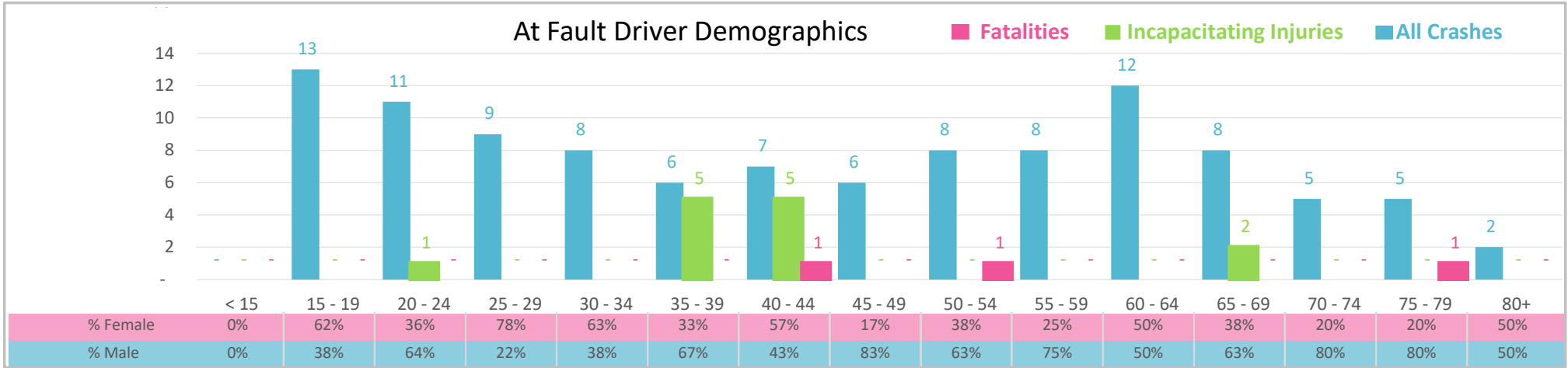




Injury Severity*	Fatal	Incapacitating	Non-Incapacitating	Possible	None/Property Damage Only	TOTAL
Crashes	3	5	8	17	75	108
People Injured	3	13	14	26	NA	56

*NOTE: Crash severity is determined from the highest injury type in the crash (i.e. if a crash had both a fatal and a serious it is determined to be a fatal crash).



- ### Key Distracted Driving Crash Facts
- 2021 population of 21,815.
 - Driver age is distributed broadly across all age groups under 70; male drivers account for 56% of all crashes and resulted in the 3 fatalities.
 - Unrestrained occupant was noted as a factor in 13% of crashes and resulted in the 3 fatalities.
 - Intoxication was noted as a factor in 6 crashes and resulted in 1 fatality.
 - 46% of crashes occurred along City Streets with most of the remainder occurring on State and US Routes.
 - Pick-up and light trucks accounted for 38% of motor vehicles involved in distracted driving crashes.
 - 23% of crashes occurred at night.

NOTE: Fatalities and Serious Injuries in bar graphs indicate persons not crashes. | SOURCES: 2022 CARS data (unofficial at time of report). | DATE GENERATED: 3/20/2023