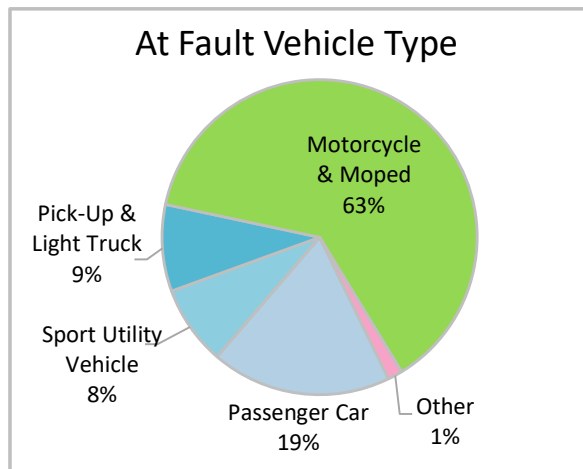
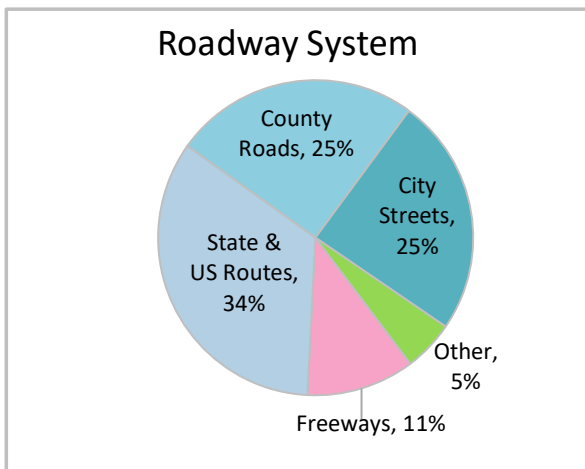
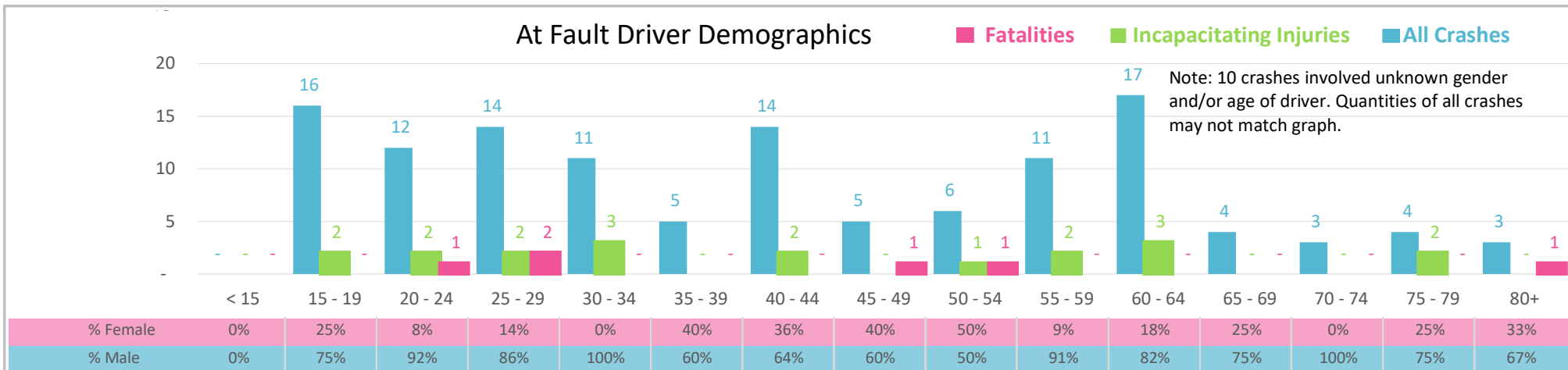




Injury Severity*	Fatal	Incapacitating	Non-Incapacitating	Possible	None/Property Damage Only	TOTAL
Crashes	6	17	37	29	46	135
People Injured	6	20	49	39	NA	114

\*NOTE: Crash severity is determined from the highest injury type in the crash (i.e. if a crash had both a fatal and a serious it is determined to be a fatal crash).



- ### Key Motorcycle Crash Facts
- 2021 population of 292,466.
  - Driver age is distributed broadly across all age groups under 65; male drivers account for 79% of all crashes and 4 fatalities.
  - Unrestrained occupant was noted as a factor in 2 crashes.
  - Intoxication was noted as a factor in 7 crashes and resulted in 2 fatalities.
  - Crashes occurred mostly distributed along all roadway systems with highest on State and US Routes, 34%.
  - Motorcycles and mopeds accounted for 63% of at fault motor vehicles involved in motorcycle crashes.
  - 35% of crashes occurred at night resulting in 3 fatalities.

NOTE: Fatalities and Serious Injuries in bar graphs indicate persons not crashes. | SOURCES: 2022 CARS data (unofficial at time of report). | DATE GENERATED: 3/29/2023