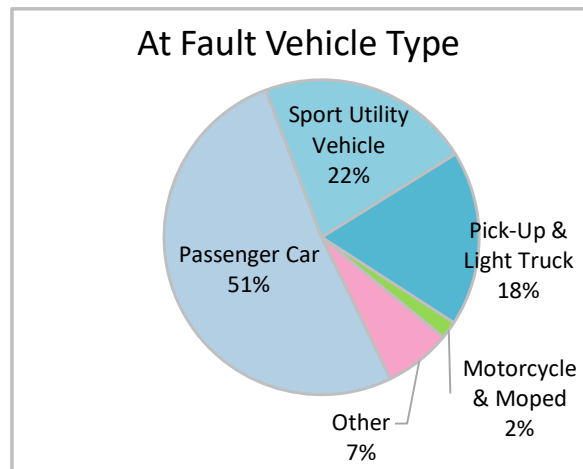
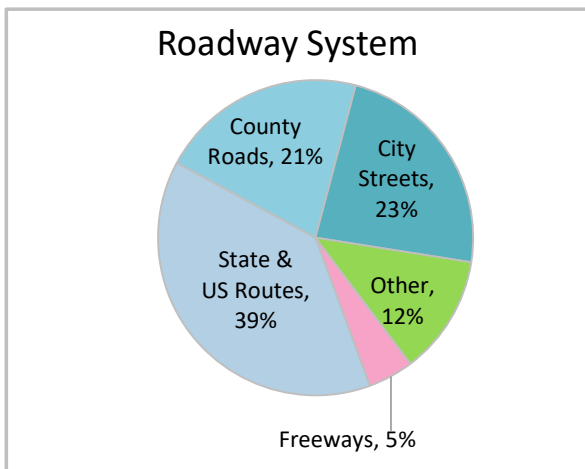
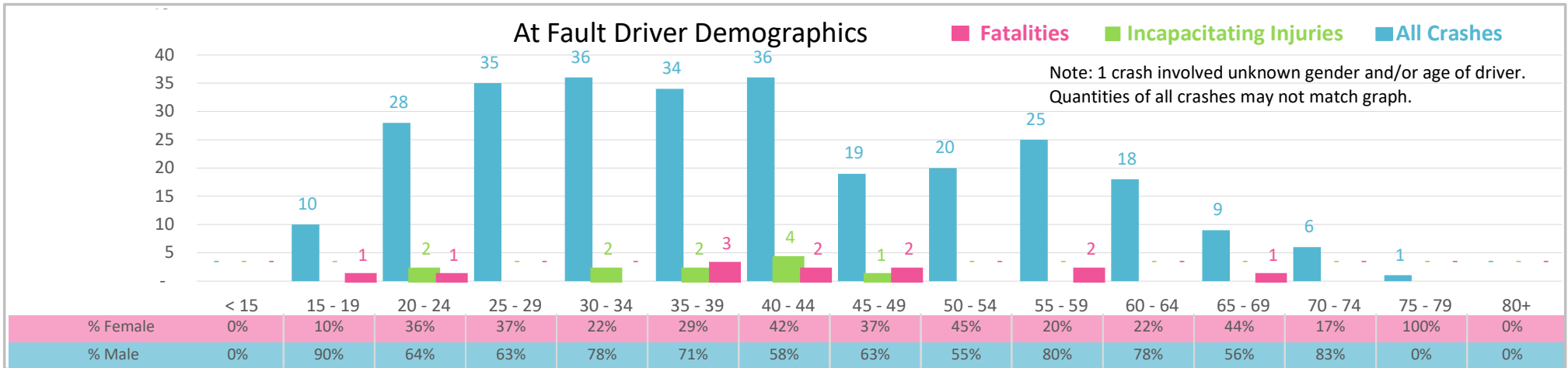




Injury Severity*	Fatal	Incapacitating	Non-Incapacitating	Possible	None/Property Damage Only	TOTAL
Crashes	13	9	37	49	170	278
People Injured	13	11	46	64	NA	134

*NOTE: Crash severity is determined from the highest injury type in the crash (i.e. if a crash had both a fatal and a serious it is determined to be a fatal crash).



- ### Key Impaired Crash Facts
- 2021 population of 292,466.
 - 51% of crashes involved drivers under 40; male drivers account for 68% of all crashes and 11 fatalities.
 - Unrestrained occupant was noted as a factor in 11% of crashes and resulted in 4 fatalities.
 - 39% of crashes occurred along State and US Routes with most of the remainder occurring on City Streets.
 - Passenger cars accounted for 51% of motor vehicles involved in distracted driving crashes.
 - 69% of crashes occurred at night resulting in 9 fatalities.

NOTE: Fatalities and Serious Injuries in bar graphs indicate persons not crashes. | SOURCES: 2022 CARS data (unofficial at time of report). | DATE GENERATED: 3/24/2023