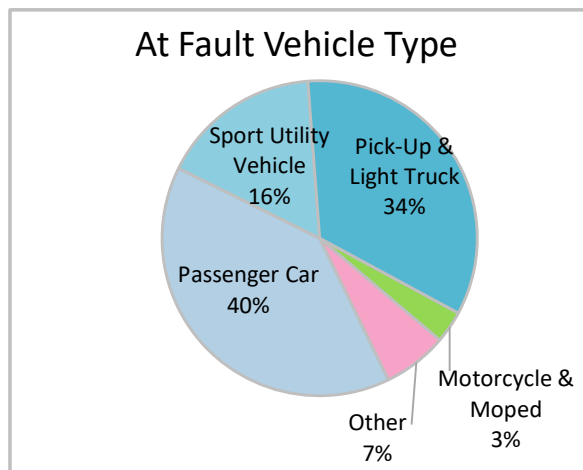
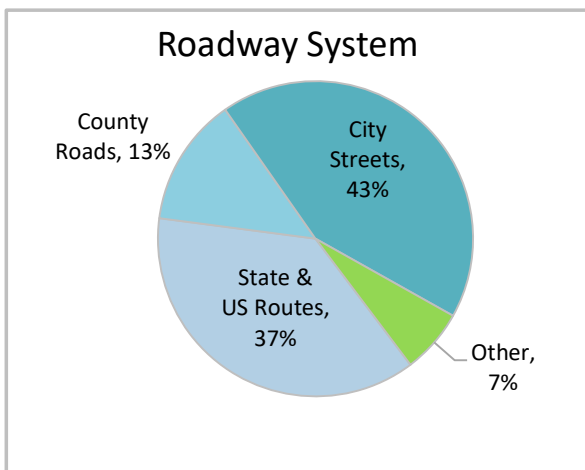
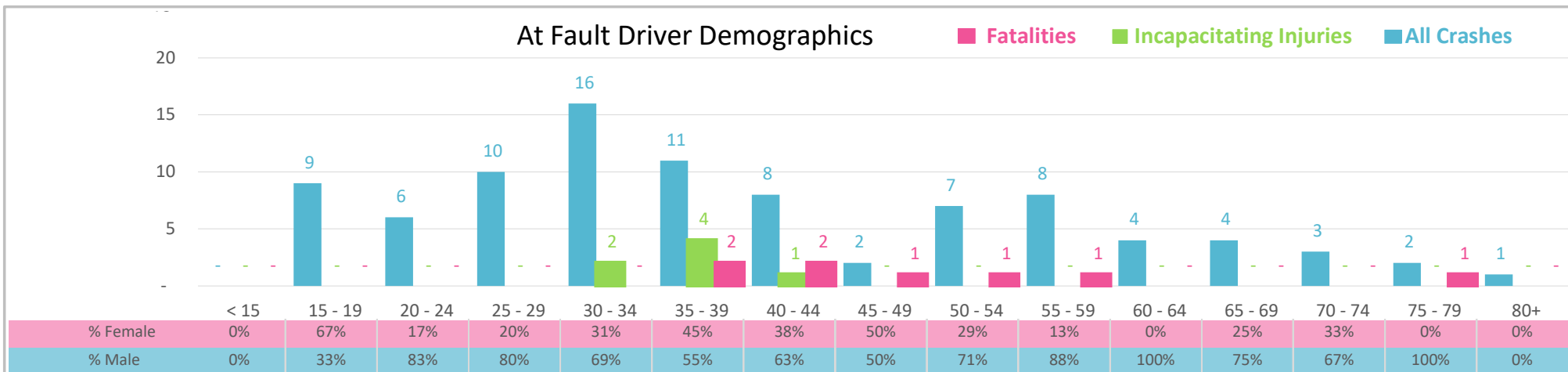




| Injury Severity* | Fatal | Incapacitating | Non-Incapacitating | Possible | None/Property Damage Only | TOTAL |
|------------------|-------|----------------|--------------------|----------|---------------------------|-------|
| Crashes          | 8     | 3              | 19                 | 13       | 48                        | 91    |
| People Injured   | 8     | 7              | 24                 | 27       | NA                        | 66    |

\*NOTE: Crash severity is determined from the highest injury type in the crash (i.e. if a crash had both a fatal and a serious it is determined to be a fatal crash).



- ### Key Impaired Crash Facts
- 2021 population of 74,167.
  - 45% of crashes involved drivers under 35; male drivers account for 69% of all crashes and 7 fatalities.
  - Unrestrained occupant was noted as a factor in 15% of crashes and resulted in 3 fatalities.
  - 43% of crashes occurred along City Streets with most of the remainder occurring on State and US Routes.
  - Passenger cars accounted for 40% of motor vehicles involved in distracted driving crashes.
  - 64% of crashes occurred at night resulting in 4 fatalities.

NOTE: Fatalities and Serious Injuries in bar graphs indicate persons not crashes. | SOURCES: 2022 CARS data (unofficial at time of report). | DATE GENERATED: 3/24/2023