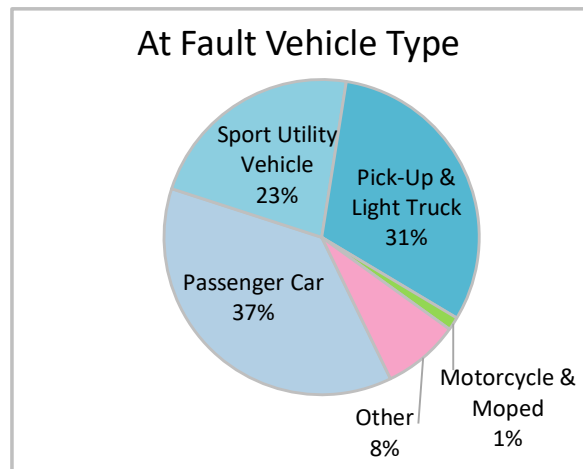
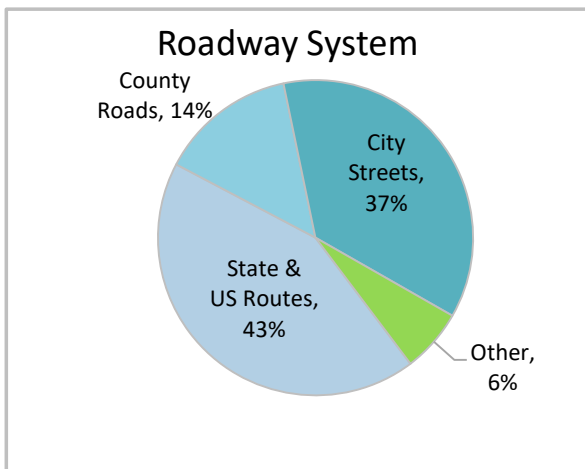
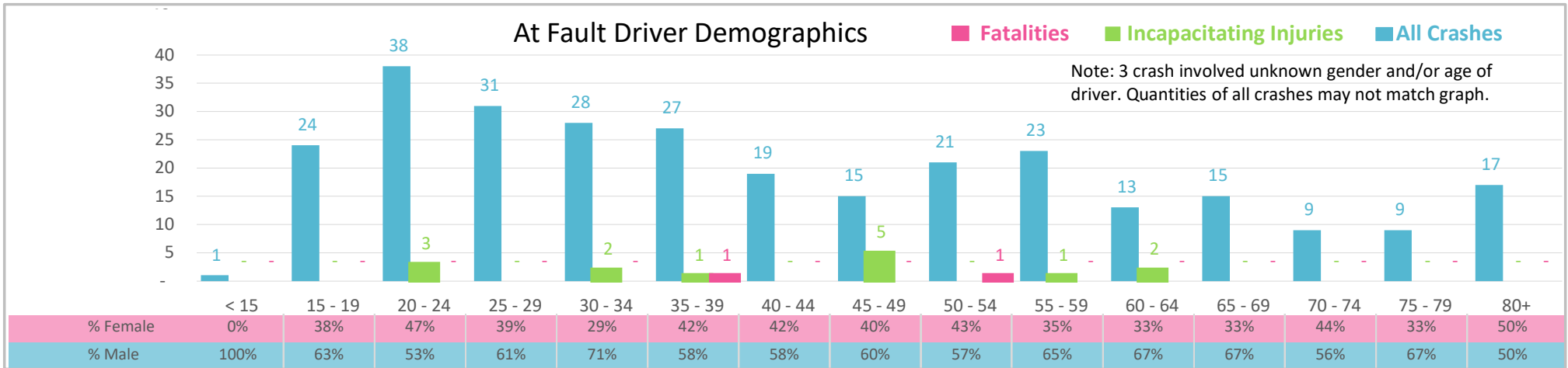




Injury Severity*	Fatal	Incapacitating	Non-Incapacitating	Possible	None/Property Damage Only	TOTAL
Crashes	2	9	39	43	200	293
People Injured	2	14	57	76	NA	149

*NOTE: Crash severity is determined from the highest injury type in the crash (i.e. if a crash had both a fatal and a serious it is determined to be a fatal crash).



- ### Key Distracted Driving Crash Facts
- 2021 population of 74,167.
 - 42% of crashes involved drivers under 35; male drivers account for 61% of all crashes and 1 of 2 fatal crashes.
 - Unrestrained occupant was noted as a factor in 9% of crashes and resulted in 1 fatality.
 - Intoxication was noted as a factor in 7% of crashes and resulted in the 2 fatalities.
 - 43% of crashes occurred along State and US Routes with most of the remainder occurring on city streets.
 - Types of motor vehicles involved in distracted driving crashes were generally equally distributed with highest involving passenger cars, 37%.
 - 33% of crashes occurred at night resulting in 1 fatality.

NOTE: Fatalities and Serious Injuries in bar graphs indicate persons not crashes. | SOURCES: 2022 CARS data (unofficial at time of report). | DATE GENERATED: 3/20/2023