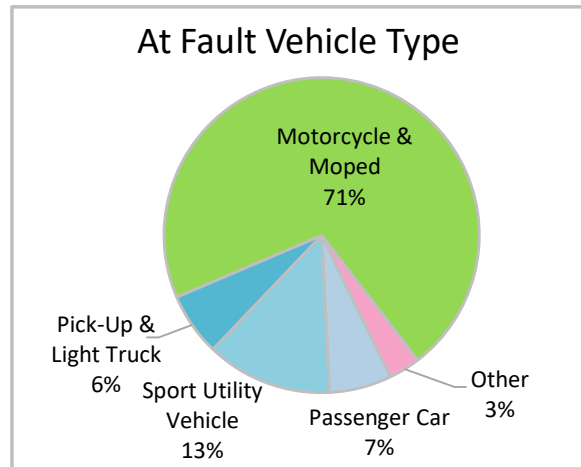
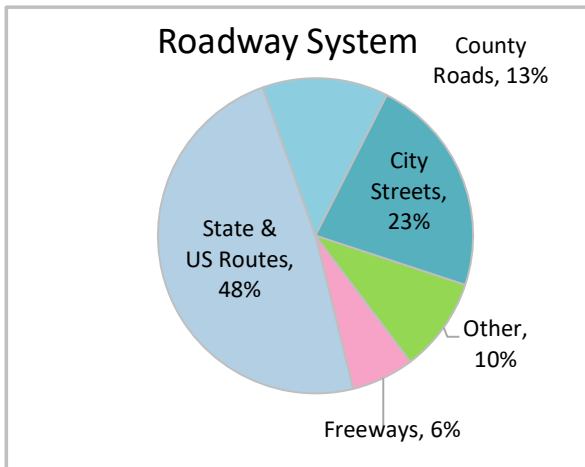
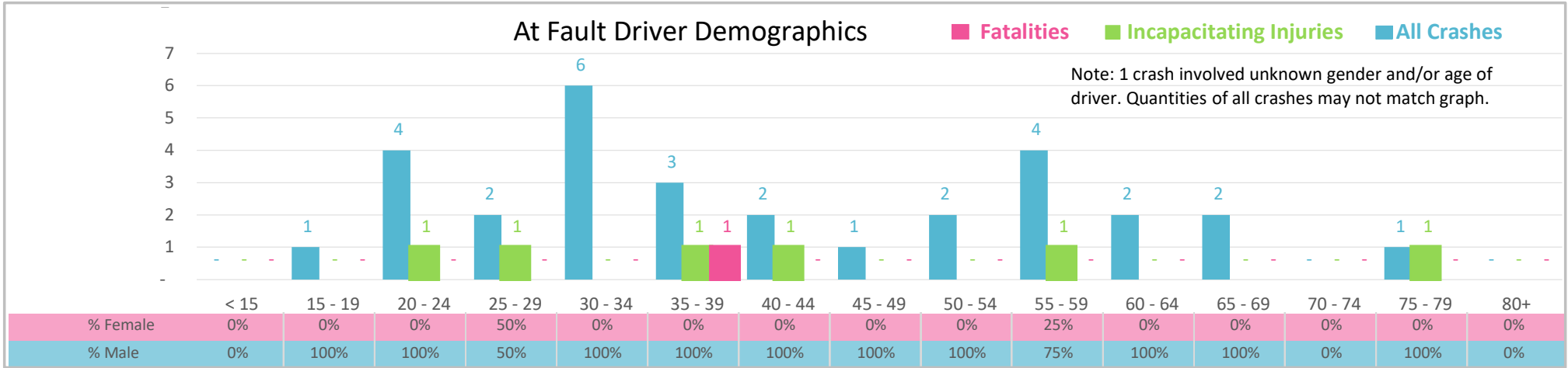




Injury Severity*	Fatal	Incapacitating	Non-Incapacitating	Possible	None/Property Damage Only	TOTAL
Crashes	1	7	13	6	4	31
People Injured	1	7	16	7	NA	31

\*NOTE: Crash severity is determined from the highest injury type in the crash (i.e. if a crash had both a fatal and a serious it is determined to be a fatal crash).



- ### Key Motorcycle Crash Facts
- 2021 population of 94,189.
  - Driver age is distributed broadly across all age groups; male drivers account for 93% of all crashes and the 1 fatal crash.
  - Unrestrained occupant was not noted as a factor in crashes.
  - Intoxication was noted as a factor in 1 crash.
  - 48% of crashes occurred along State and US Routes with most of the remainder occurring on City Streets.
  - Motorcycles and mopeds accounted for 71% of at fault motor vehicles involved in motorcycle crashes.
  - 42% of crashes occurred at night resulting in the 1 fatal crash.

NOTE: Fatalities and Serious Injuries in bar graphs indicate persons not crashes. | SOURCES: 2022 CARS data (unofficial at time of report). | DATE GENERATED: 3/29/2023