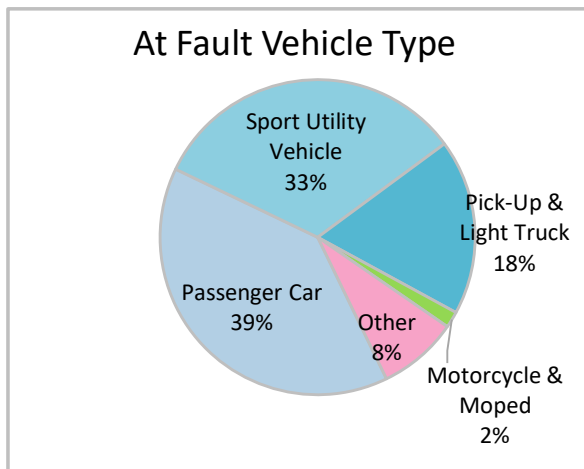
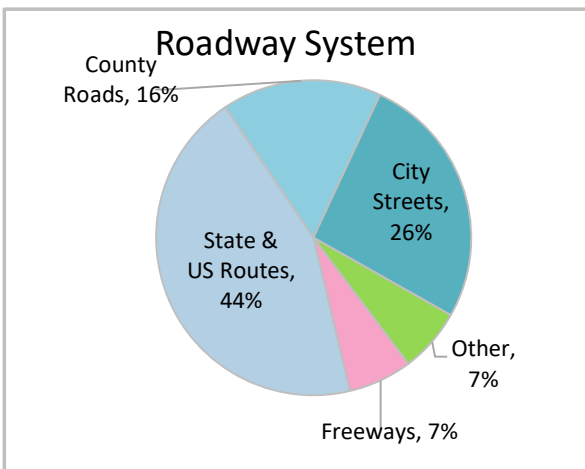
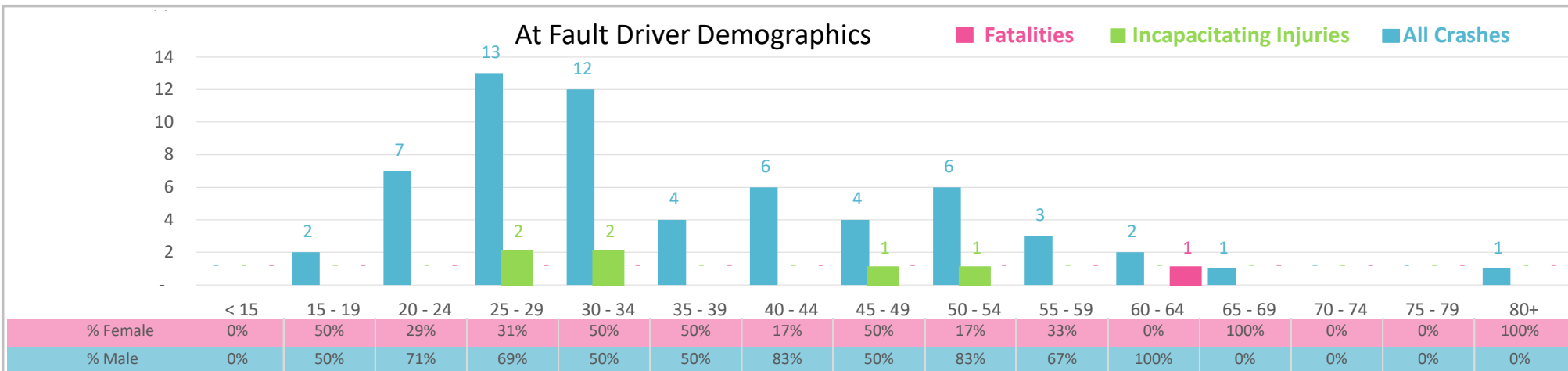




Injury Severity*	Fatal	Incapacitating	Non-Incapacitating	Possible	None/Property Damage Only	TOTAL
Crashes	1	6	13	4	37	61
People Injured	1	6	18	8	NA	33

*NOTE: Crash severity is determined from the highest injury type in the crash (i.e. if a crash had both a fatal and a serious it is determined to be a fatal crash).



- ### Key Impaired Crash Facts
- 2021 population of 94,189.
 - 56% of crashes involved drivers under 35; male drivers account for 64% of all crashes.
 - Unrestrained occupant was noted as a factor in 4 crashes.
 - 44% of crashes occurred along State and US Routes with most of the remainder occurring on City Streets.
 - Passenger cars accounted for 39% of motor vehicles involved in distracted driving crashes.
 - 59% of crashes occurred at night.

NOTE: Fatalities and Serious Injuries in bar graphs indicate persons not crashes. | SOURCES: 2022 CARS data (unofficial at time of report). | DATE GENERATED: 3/24/2023