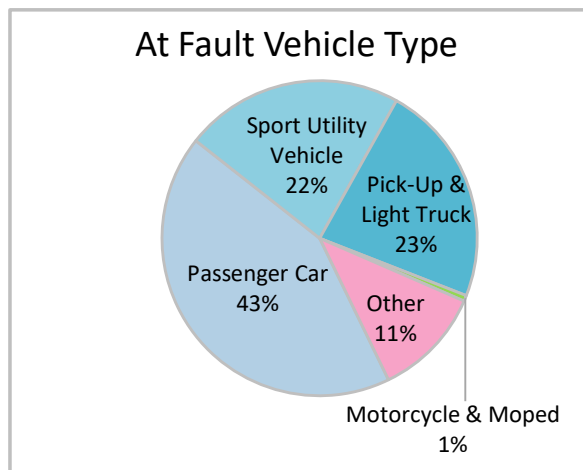
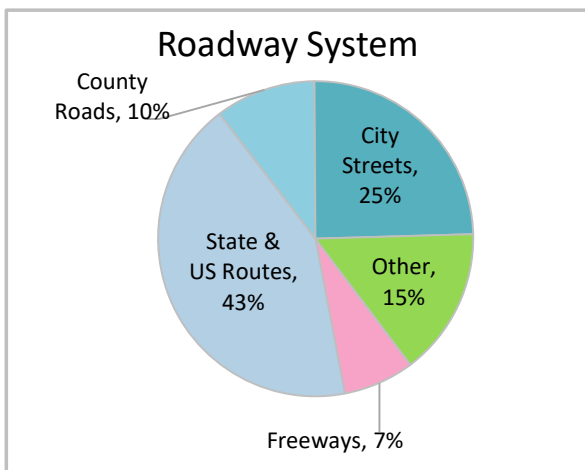
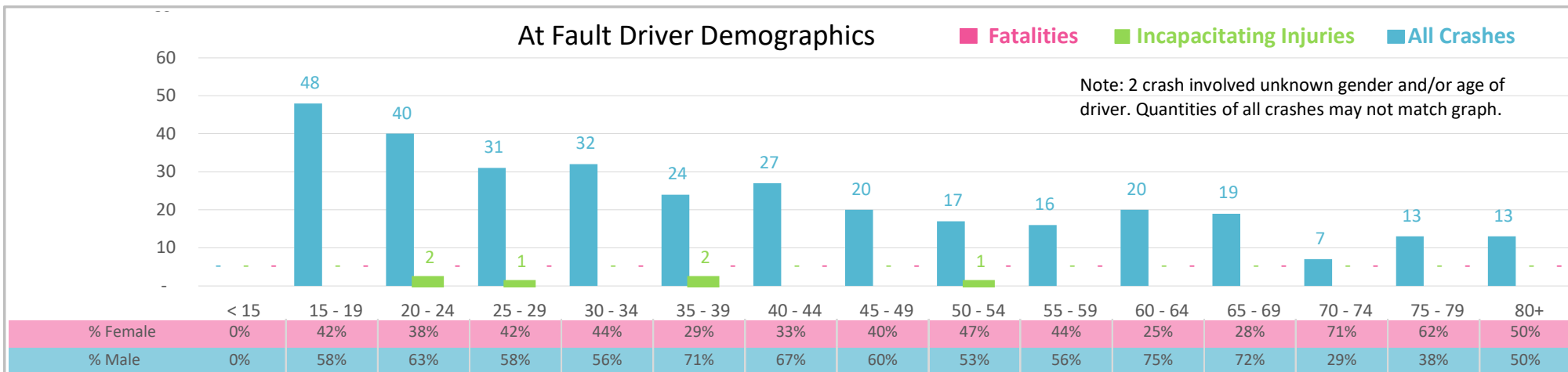




Injury Severity*	Fatal	Incapacitating	Non-Incapacitating	Possible	None/Property Damage Only	TOTAL
Crashes	0	4	36	61	228	329
People Injured	0	6	44	94	NA	144

\*NOTE: Crash severity is determined from the highest injury type in the crash (i.e. if a crash had both a fatal and a serious it is determined to be a fatal crash).



- ### Key Distracted Driving Crash Facts
- 2021 population of 94,189.
  - 46% of crashes involved drivers under 35; male drivers account for 60% of all crashes.
  - Unrestrained occupant was noted as a factor in 9 crashes.
  - Intoxication was noted as a factor in 8 crashes.
  - 43% of crashes occurred along State and US Routes with most of the remainder occurring on city streets.
  - Passenger cars accounted for 43% of motor vehicles involved in distracted driving crashes.
  - 25% of crashes occurred at night.

NOTE: Fatalities and Serious Injuries in bar graphs indicate persons not crashes. | SOURCES: 2022 CARS data (unofficial at time of report). | DATE GENERATED: 3/20/2023