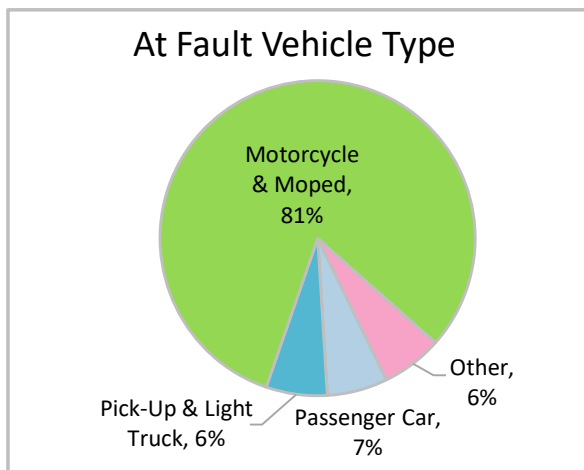
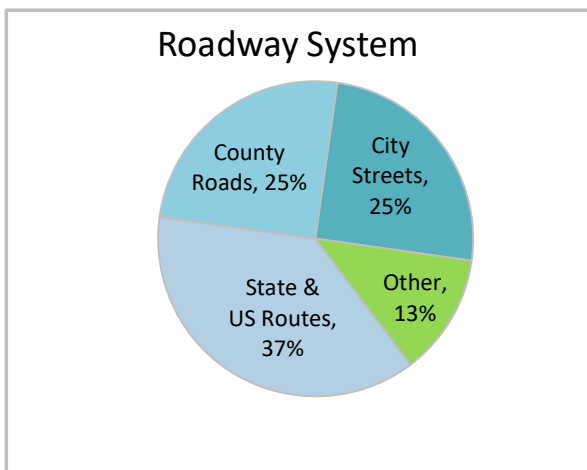
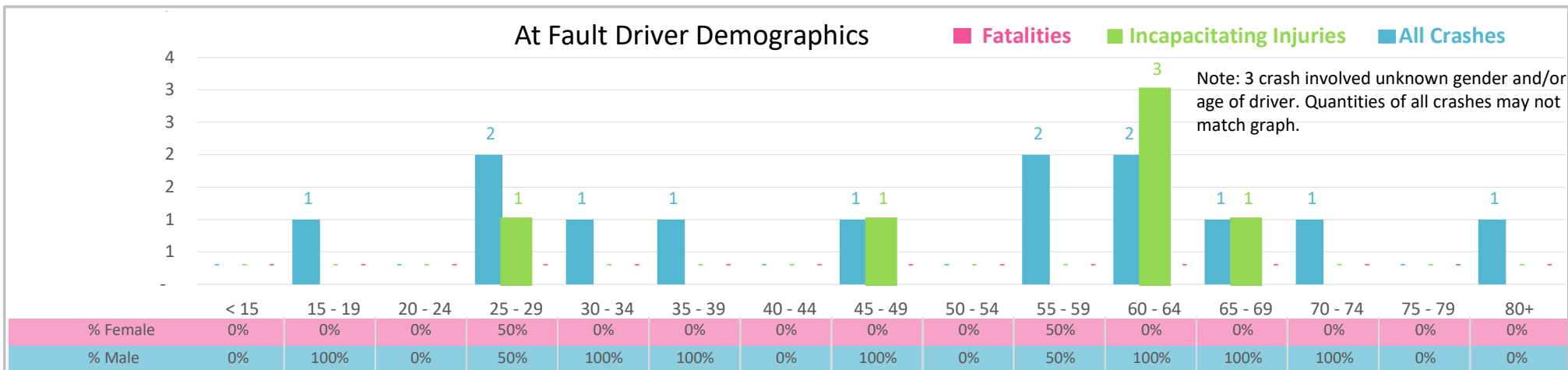




Injury Severity*	Fatal	Incapacitating	Non-Incapacitating	Possible	None/Property Damage Only	TOTAL
Crashes	0	6	4	3	3	16
People Injured	0	7	7	3	NA	17

*NOTE: Crash severity is determined from the highest injury type in the crash (i.e. if a crash had both a fatal and a serious it is determined to be a fatal crash).



- ### Key Motorcycle Crash Facts
- 2021 population of 44,158.
 - Driver age is distributed broadly across all age groups; male drivers account for 85% of all crashes.
 - Unrestrained occupant was not noted as a factor in crashes.
 - Intoxication was noted as a factor in 1 crash.
 - 37% of crashes occurred along State and US Routes with most of the remainder occurring on City Streets and County Roads.
 - Motorcycles and mopeds accounted for 81% of at fault motor vehicles involved in motorcycle crashes.
 - 8 crashes occurred at night.

NOTE: Fatalities and Serious Injuries in bar graphs indicate persons not crashes. | SOURCES: 2022 CARS data (unofficial at time of report). | DATE GENERATED: 3/29/2023