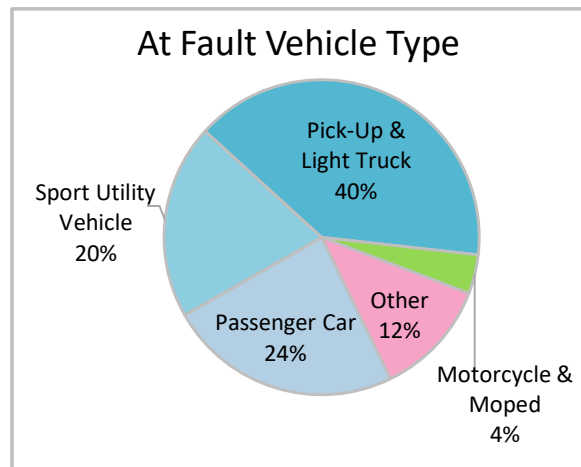
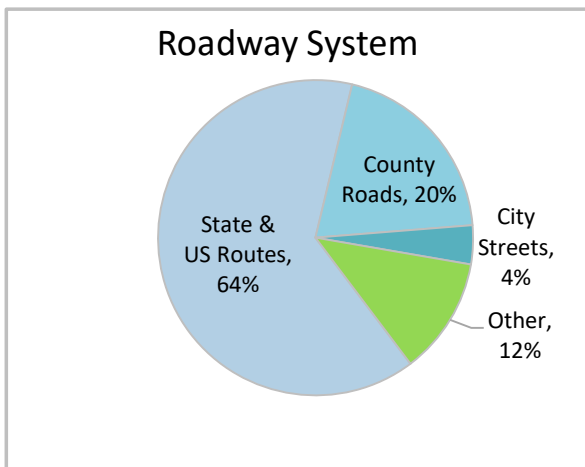
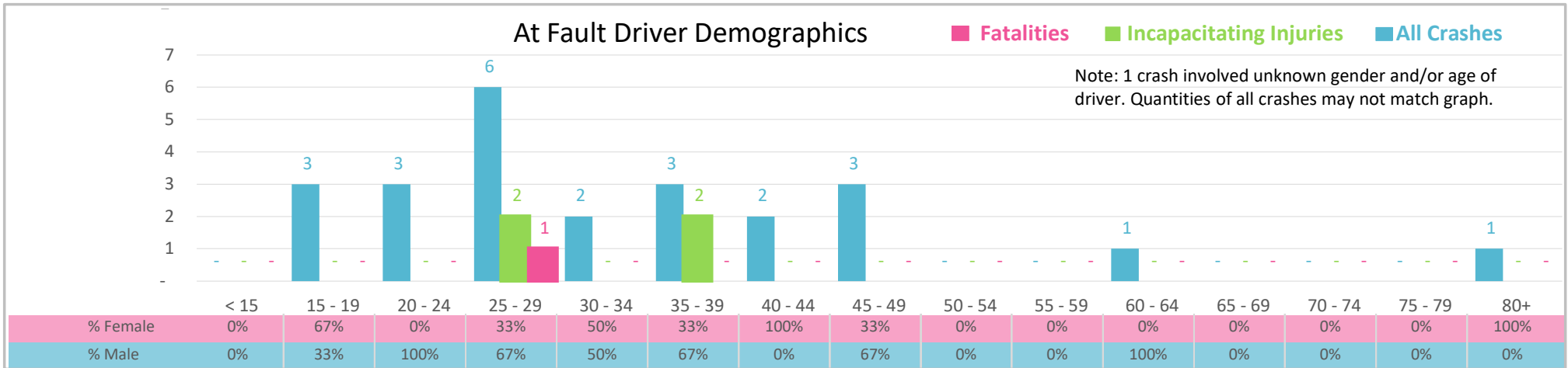




Injury Severity*	Fatal	Incapacitating	Non-Incapacitating	Possible	None/Property Damage Only	TOTAL
Crashes	1	2	5	7	10	25
People Injured	1	4	11	18	NA	34

\*NOTE: Crash severity is determined from the highest injury type in the crash (i.e. if a crash had both a fatal and a serious it is determined to be a fatal crash).



- ### Key Distracted Driving Crash Facts
- 2021 population of 18,360.
  - 48% of crashes involved drivers under 30; male drivers account for 58% of all crashes.
  - Unrestrained occupant was noted as a factor in 3% of crashes.
  - Intoxication was not noted as a factor in any of crashes.
  - 64% of crashes occurred along State and US Routes with most of the remainder occurring on county roads.
  - Pick-up and light trucks accounted for 40% of motor vehicles involved in distracted driving crashes.
  - 28% of crashes occurred at night.

NOTE: Fatalities and Serious Injuries in bar graphs indicate persons not crashes. | SOURCES: 2022 CARS data (unofficial at time of report). | DATE GENERATED: 3/20/2023