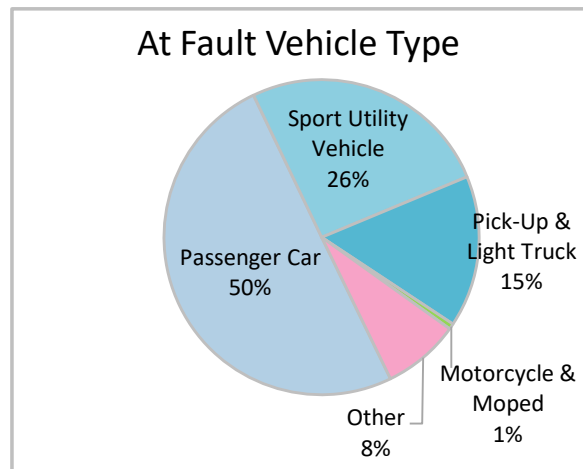
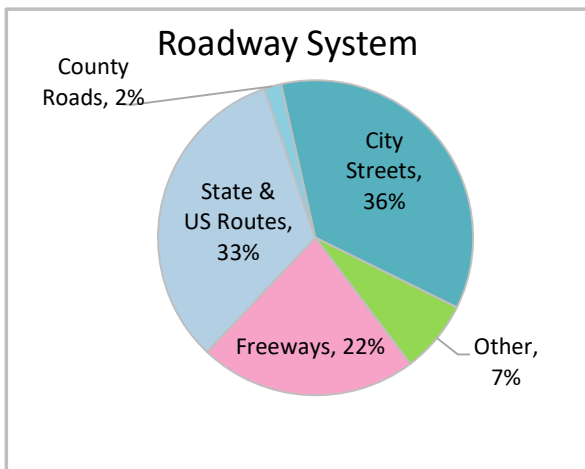
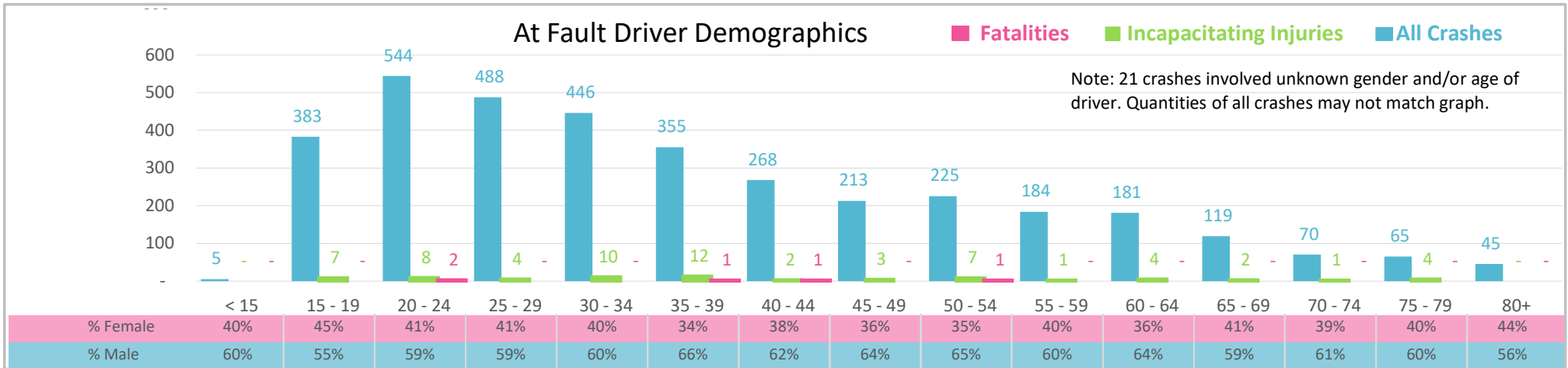




Injury Severity*	Fatal	Incapacitating	Non-Incapacitating	Possible	None/Property Damage Only	TOTAL
<b>Crashes</b>	4	55	454	727	2,372	<b>3,612</b>
<b>People Injured</b>	5	66	607	1,237	NA	<b>1,915</b>

\*NOTE: Crash severity is determined from the highest injury type in the crash (i.e. if a crash had both a fatal and a serious it is determined to be a fatal crash).



- ### Key Distracted Driving Crash Facts
- 2021 population of 999,935.
  - 52% of crashes involved drivers under 35; male drivers account for 61% of all crashes.
  - Unrestrained occupant was noted as a factor in 3% of crashes and resulted in 1 fatality.
  - Intoxication was noted as a factor in 4% of crashes and resulted in 3 fatalities.
  - 36% of crashes occurred along city streets with most of the remainder occurring on State and US Routes.
  - Passenger cars accounted for 50% of motor vehicles involved in distracted driving crashes.
  - 32% of crashes occurred at night resulting in 3 fatalities.

NOTE: Fatalities and Serious Injuries in bar graphs indicate persons not crashes. | SOURCES: 2022 CARS data (unofficial at time of report). | DATE GENERATED: 3/20/2023