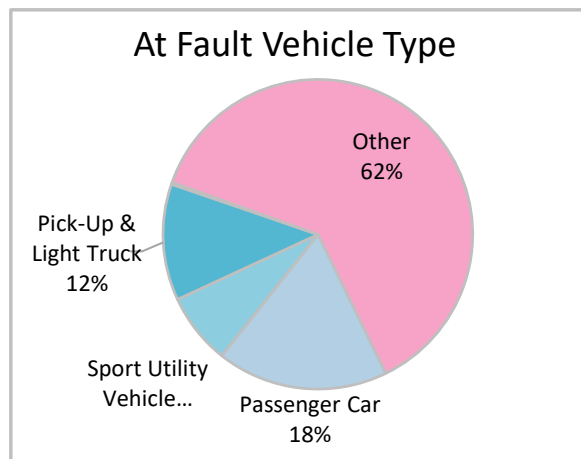
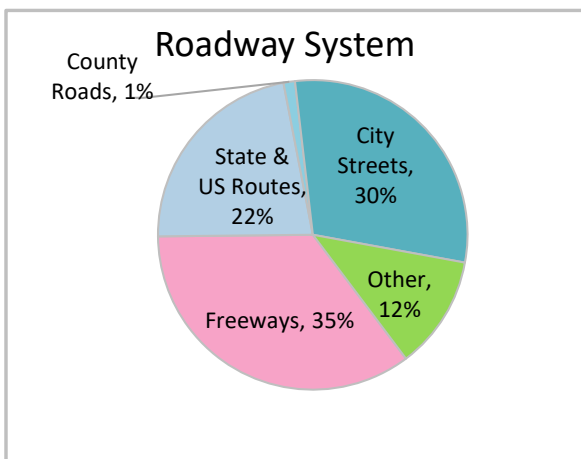
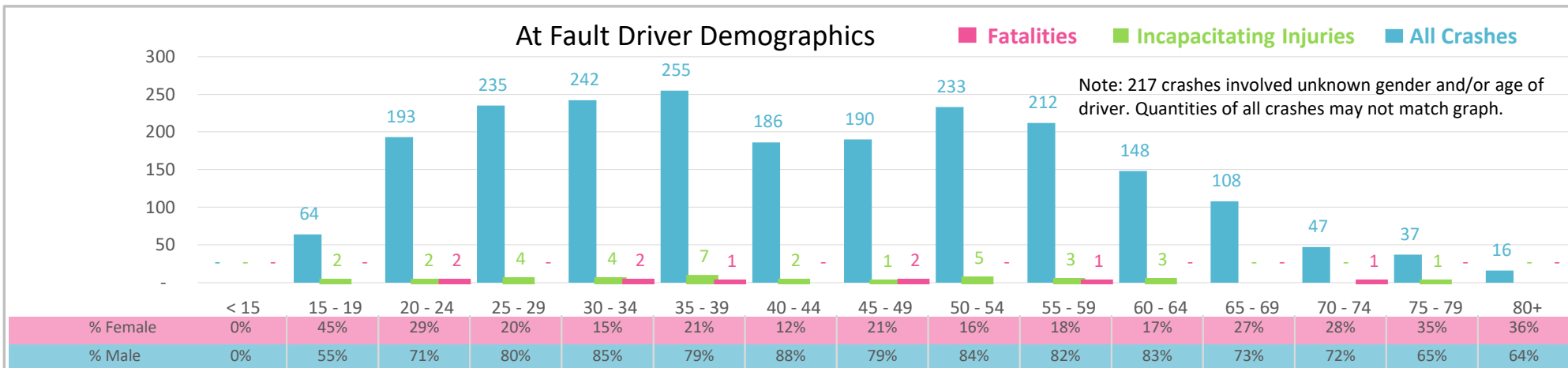




Injury Severity*	Fatal	Incapacitating	Non-Incapacitating	Possible	None/Property Damage Only	TOTAL
Crashes	9	32	135	275	1,932	2,383
People Injured	9	36	171	427	NA	643

*NOTE: Crash severity is determined from the highest injury type in the crash (i.e. if a crash had both a fatal and a serious it is determined to be a fatal crash).



- ### Key Commercial Motor Vehicle Crash Facts
- 2021 population of 999,935.
 - Driver age is distributed broadly across all age groups under 65; male drivers account for 79% of all crashes and 6 fatalities.
 - Unrestrained occupant was noted as a factor in 3% of crashes and resulted in 2 fatalities.
 - Intoxication was noted as a factor in 1% of crashes and resulted in 3 fatalities.
 - 35% of crashes occurred along Freeways with most of the remainder occurring on City Streets.
 - Other vehicle type accounted for 62% of motor vehicles involved in commercial vehicle crashes.
 - 19% of crashes occurred at night with 4 fatalities.

NOTE: Fatalities and Serious Injuries in bar graphs indicate persons not crashes. | SOURCES: 2022 CARS data (unofficial at time of report). | DATE GENERATED: 4/3/2023