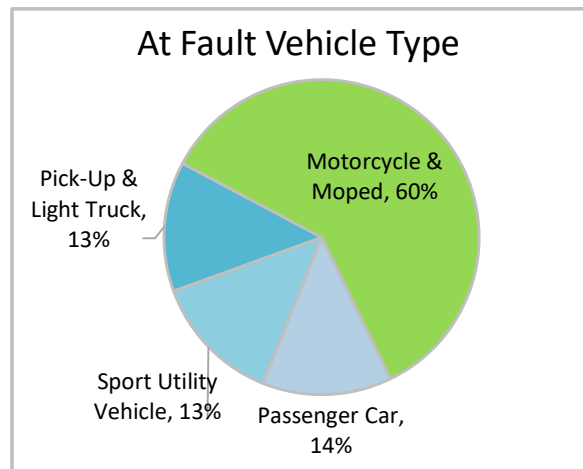
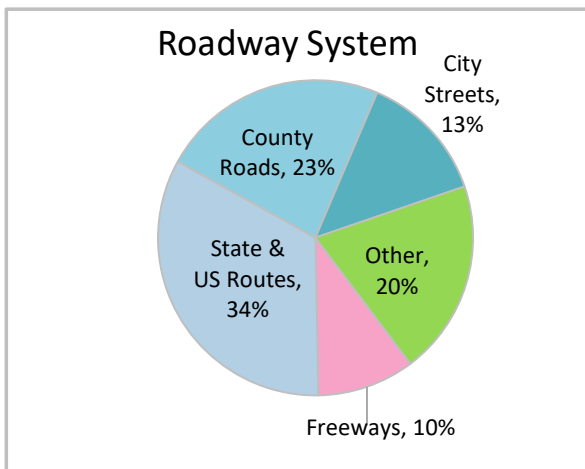
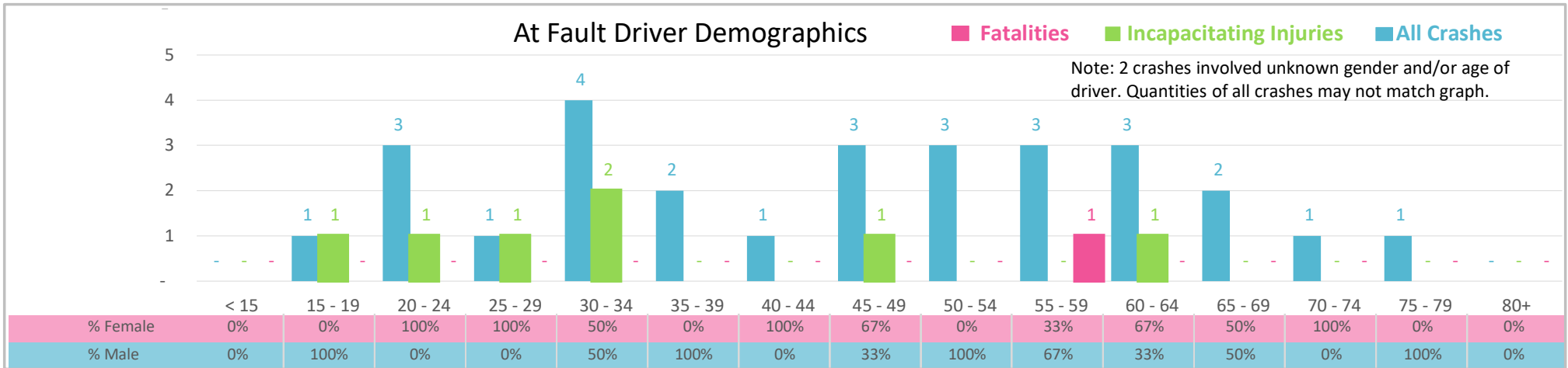




Injury Severity*	Fatal	Incapacitating	Non-Incapacitating	Possible	None/Property Damage Only	TOTAL
Crashes	1	7	6	6	10	30
People Injured	1	7	7	7	NA	22

*NOTE: Crash severity is determined from the highest injury type in the crash (i.e. if a crash had both a fatal and a serious it is determined to be a fatal crash).



- ### Key Motorcycle Crash Facts
- 2021 population of 70,385.
 - Driver age is distributed broadly across all age groups; male and female drivers account for 50% of all crashes.
 - Unrestrained occupant was noted as a factor in 1 crash.
 - Intoxication was not noted as a factor in crashes.
 - 34% of crashes occurred along State and US Routes with most of the remainder occurring on County Roads.
 - Motorcycles and mopeds accounted for 60% of at fault motor vehicles involved in motorcycle crashes
 - 9 crashes occurred at night.

NOTE: Fatalities and Serious Injuries in bar graphs indicate persons not crashes. | SOURCES: 2022 CARS data (unofficial at time of report). | DATE GENERATED: 3/29/2023