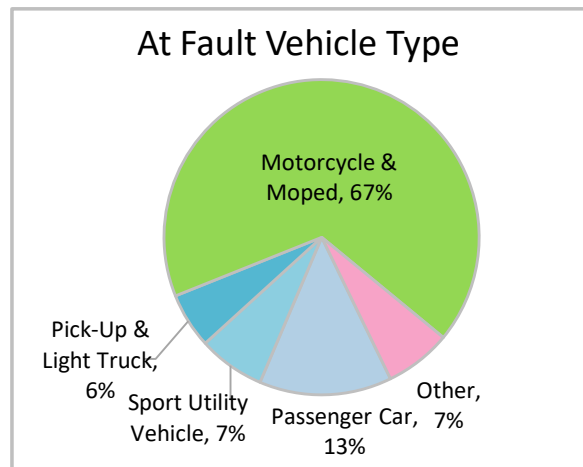
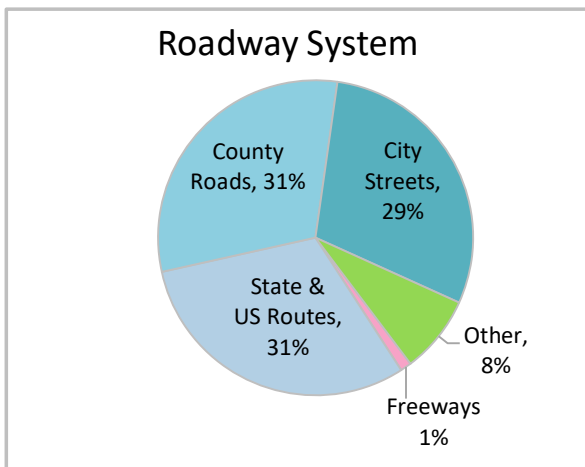
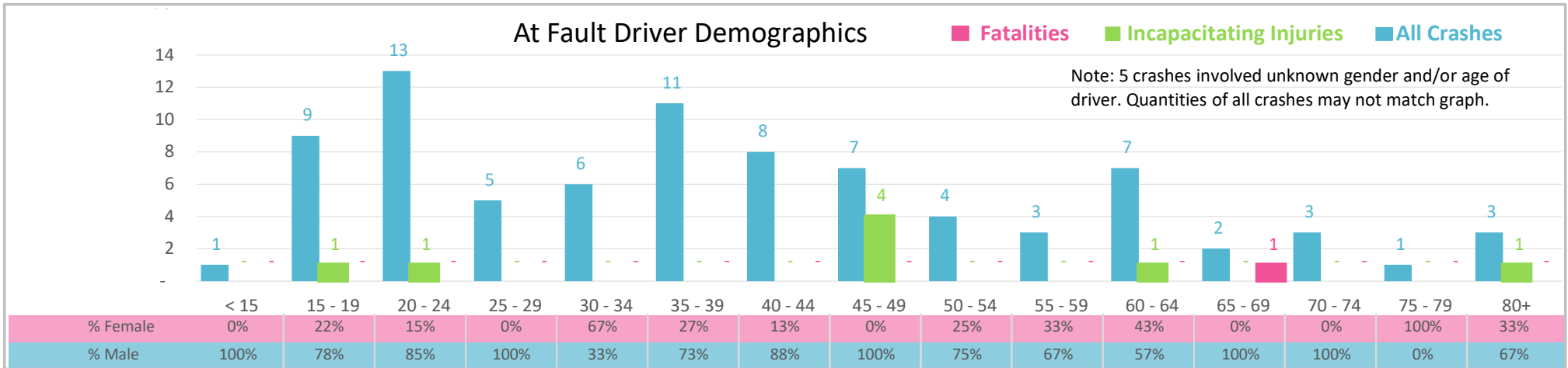




Injury Severity*	Fatal	Incapacitating	Non-Incapacitating	Possible	None/Property Damage Only	TOTAL
<b>Crashes</b>	1	6	32	26	23	<b>88</b>
<b>People Injured</b>	1	8	38	30	NA	<b>77</b>

\*NOTE: Crash severity is determined from the highest injury type in the crash (i.e. if a crash had both a fatal and a serious it is determined to be a fatal crash).



- ### Key Motorcycle Crash Facts
- 2021 population of 222,361.
  - Driver age is distributed broadly across all age groups; male drivers account for 77% of all crashes and the 1 fatality.
  - Unrestrained occupant was not noted as a factor in crashes.
  - Intoxication was not noted as a factor in crashes. Crashes occurred mostly distributed along all roadway systems with highest on County Roads (31%) and State and US Routes (31%).
  - Motorcycles and mopeds accounted for 67% of at fault motor vehicles involved in motorcycle crashes.
  - 25% of crashes occurred at night.

NOTE: Fatalities and Serious Injuries in bar graphs indicate persons not crashes. | SOURCES: 2022 CARS data (unofficial at time of report). | DATE GENERATED: 3/29/2023