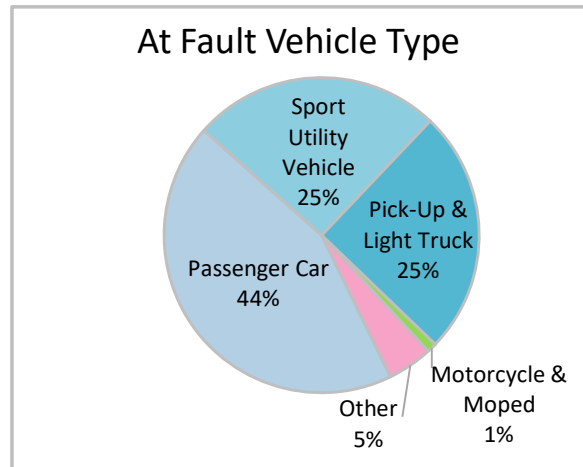
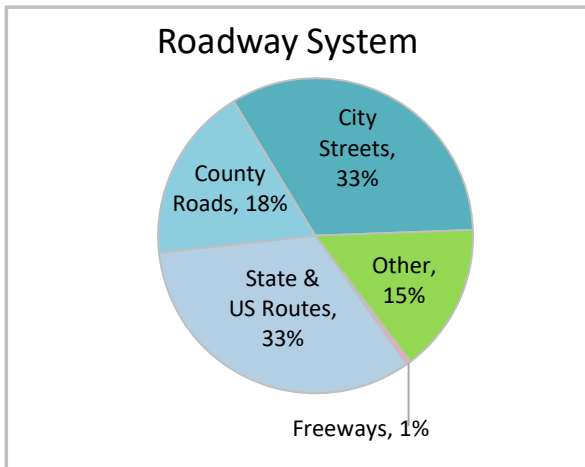
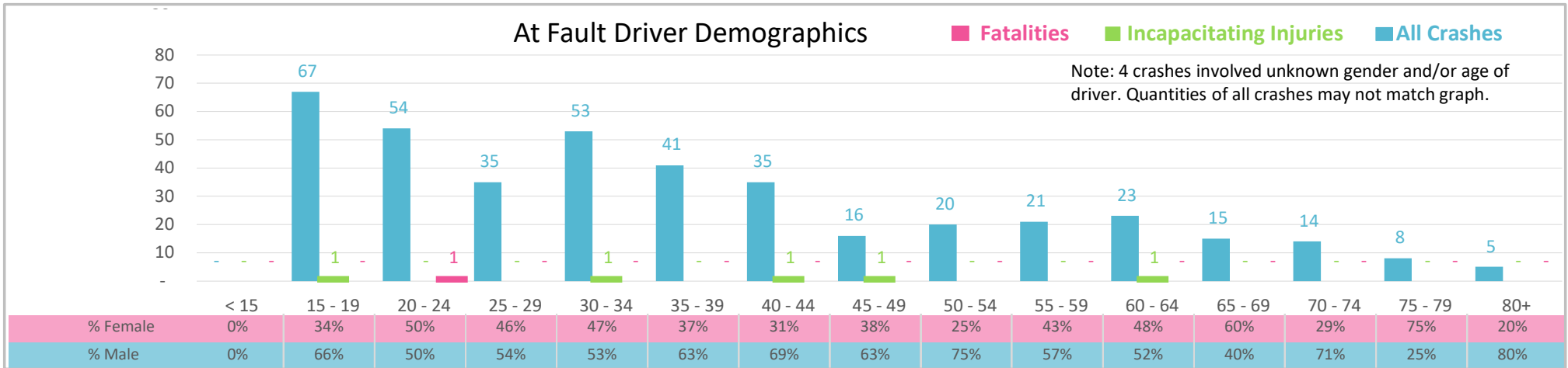




Injury Severity*	Fatal	Incapacitating	Non-Incapacitating	Possible	None/Property Damage Only	TOTAL
Crashes	1	5	27	58	320	411
People Injured	1	5	33	88	NA	127

*NOTE: Crash severity is determined from the highest injury type in the crash (i.e. if a crash had both a fatal and a serious it is determined to be a fatal crash).



- ### Key Distracted Driving Crash Facts
- 2021 population of 222,361.
 - 51% of crashes involved drivers under 35; male drivers account for 59% of all crashes and the 1 fatal crash.
 - Unrestrained occupant was noted as a factor in 4% of crashes and resulted in the 1 fatal crash.
 - Intoxication was noted as a factor in 3% of crashes and resulted in the 1 fatal crash.
 - 33% of crashes occurred along State and US Routes and 33% along city streets.
 - Passenger cars accounted for 44% of motor vehicles involved in distracted driving crashes.
 - 28% of crashes occurred at night resulting in the 1 fatal crash.

NOTE: Fatalities and Serious Injuries in bar graphs indicate persons not crashes. | SOURCES: 2022 CARS data (unofficial at time of report). | DATE GENERATED: 3/20/2023