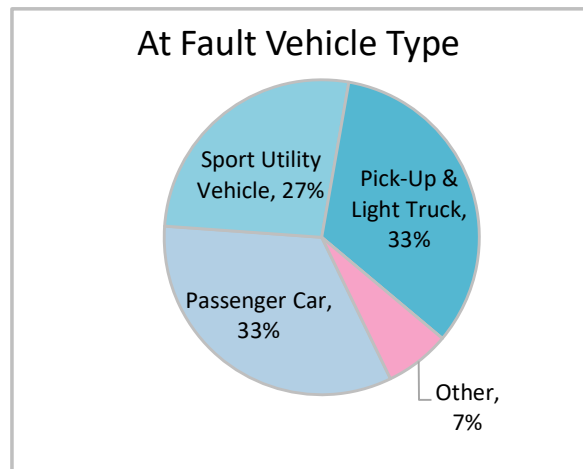
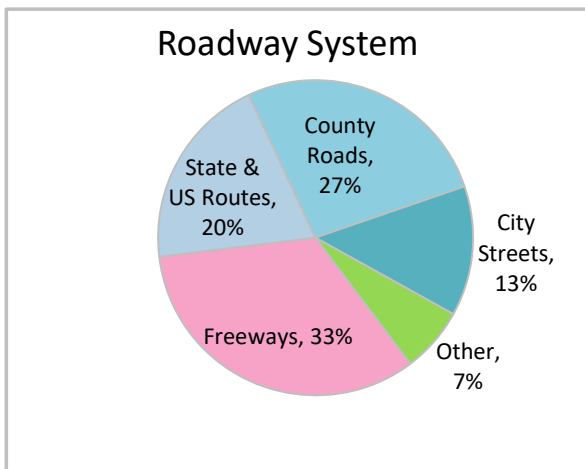
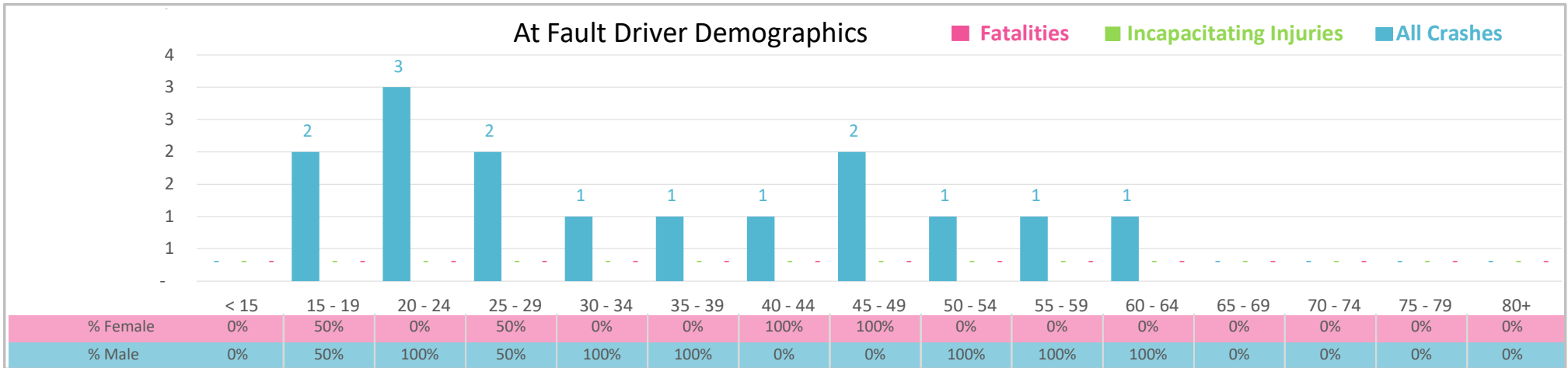




Injury Severity*	Fatal	Incapacitating	Non-Incapacitating	Possible	None/Property Damage Only	TOTAL
Crashes	0	0	3	2	10	15
People Injured	0	0	7	5	NA	12

\*NOTE: Crash severity is determined from the highest injury type in the crash (i.e. if a crash had both a fatal and a serious it is determined to be a fatal crash).



- ### Key Impaired Crash Facts
- 2021 population of 28,715.
  - Driver age is distributed broadly across all age groups under 65; male drivers account for 67% of all crashes.
  - Unrestrained occupant was noted as a factor in 1 crash.
  - 33% of crashes occurred along Freeways with most of the remainder occurring on County Roads.
  - Types of motor vehicles involved in distracted driving crashes were generally equally distributed with highest involving passenger car and pick-up and light trucks, 33% each.
  - 73% of crashes occurred at night.

NOTE: Fatalities and Serious Injuries in bar graphs indicate persons not crashes. | SOURCES: 2022 CARS data (unofficial at time of report). | DATE GENERATED: 3/24/2023