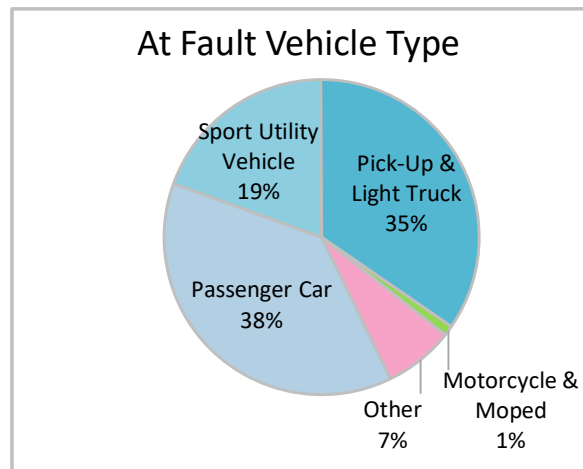
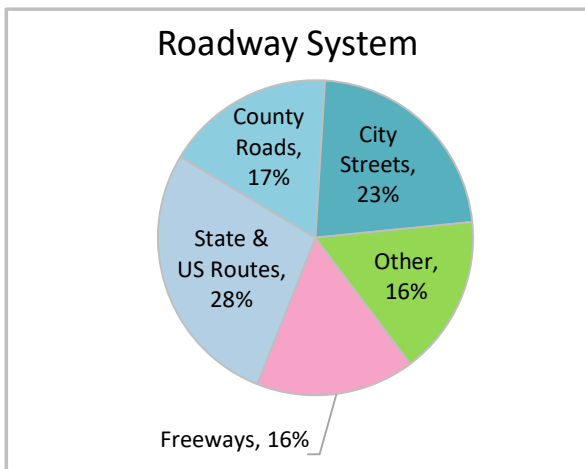
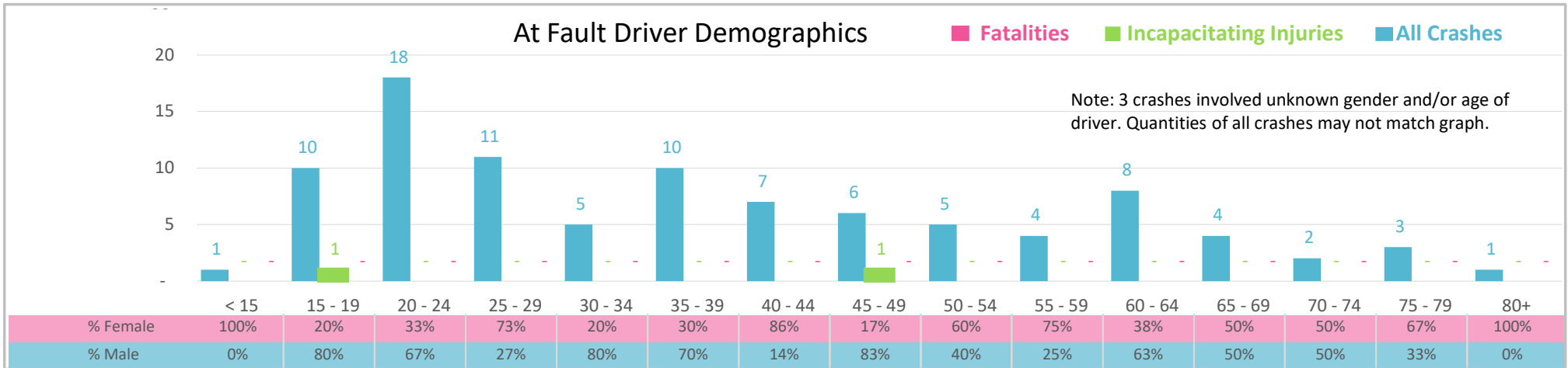




Injury Severity*	Fatal	Incapacitating	Non-Incapacitating	Possible	None/Property Damage Only	TOTAL
Crashes	0	2	9	12	75	98
People Injured	0	2	13	31	NA	46

*NOTE: Crash severity is determined from the highest injury type in the crash (i.e. if a crash had both a fatal and a serious it is determined to be a fatal crash).



- ### Key Distracted Driving Crash Facts
- 2021 population of 28,715.
 - 41% of crashes involved drivers under 30; male drivers account for 54% of all crashes.
 - Unrestrained occupant was noted as a factor in 4 crashes.
 - Intoxication was noted as a factor in 1 crash.
 - Crashes occurred mostly distributed along all roadway systems with highest on State and US Routes, 28%.
 - Passenger cars accounted for 38% of motor vehicles involved in distracted driving crashes.
 - 23% of crashes occurred at night.

NOTE: Fatalities and Serious Injuries in bar graphs indicate persons not crashes. | SOURCES: 2022 CARS data (unofficial at time of report). | DATE GENERATED: 3/20/2023