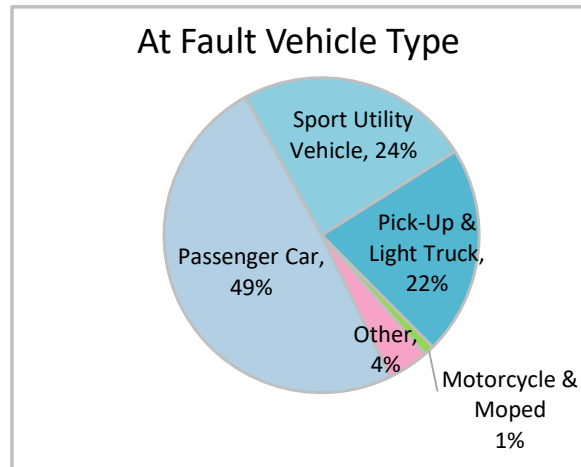
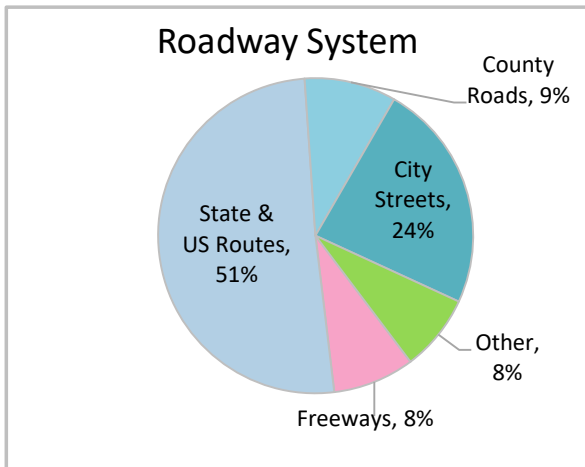
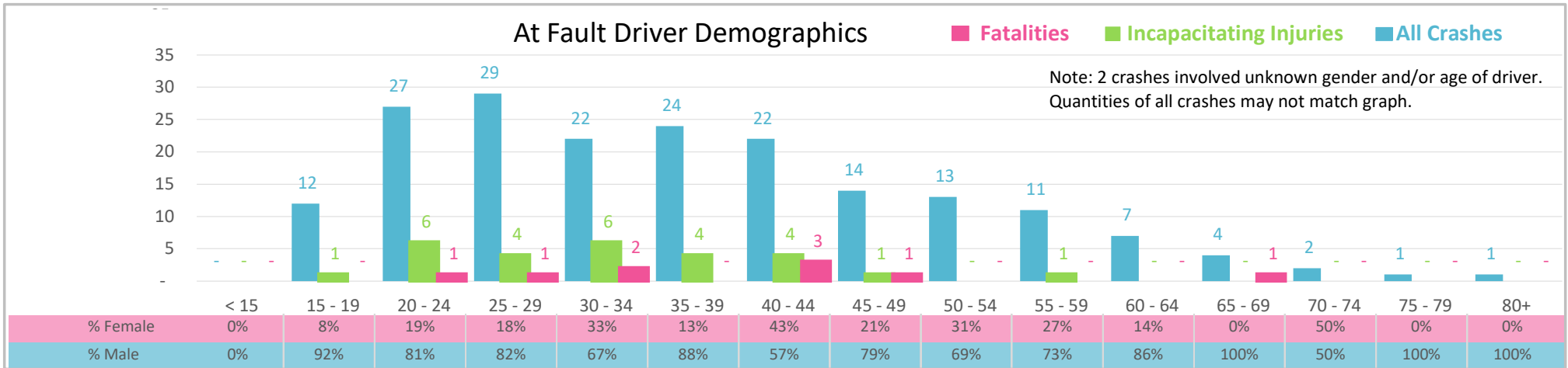




| Injury Severity* | Fatal | Incapacitating | Non-Incapacitating | Possible | None/Property Damage Only | TOTAL |
|------------------|-------|----------------|--------------------|----------|---------------------------|-------|
| Crashes | 8 | 21 | 44 | 39 | 79 | 191 |
| People Injured | 9 | 27 | 58 | 62 | NA | 156 |

*NOTE: Crash severity is determined from the highest injury type in the crash (i.e. if a crash had both a fatal and a serious it is determined to be a fatal crash).



- ### Key Impaired Crash Facts
- 2021 population of 279,238.
 - 60% of crashes involved drivers under 40; male drivers account for 77% of all crashes and 5 fatalities.
 - Unrestrained occupant was noted as a factor in 19% of crashes and resulted in 5 fatalities.
 - 51% of crashes occurred along State and US Routes with most of the remainder occurring on City Streets.
 - Passenger cars accounted for 49% of motor vehicles involved in distracted driving crashes.
 - 68% of crashes occurred at night resulting in 2 fatalities.

NOTE: Fatalities and Serious Injuries in bar graphs indicate persons not crashes. | SOURCES: 2022 CARS data (unofficial at time of report). | DATE GENERATED: 3/24/2023