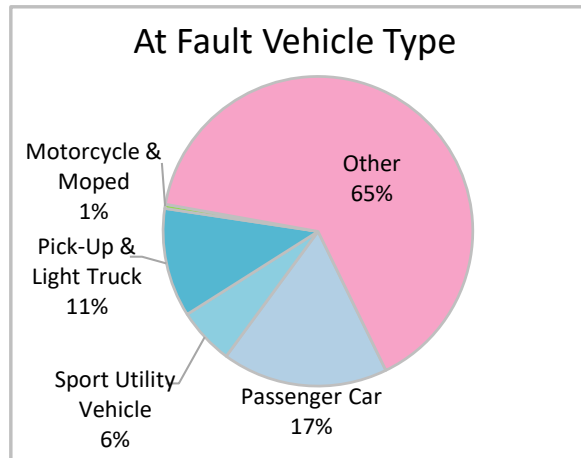
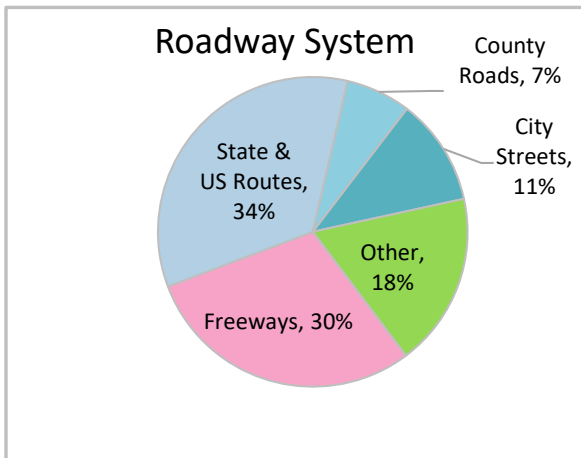
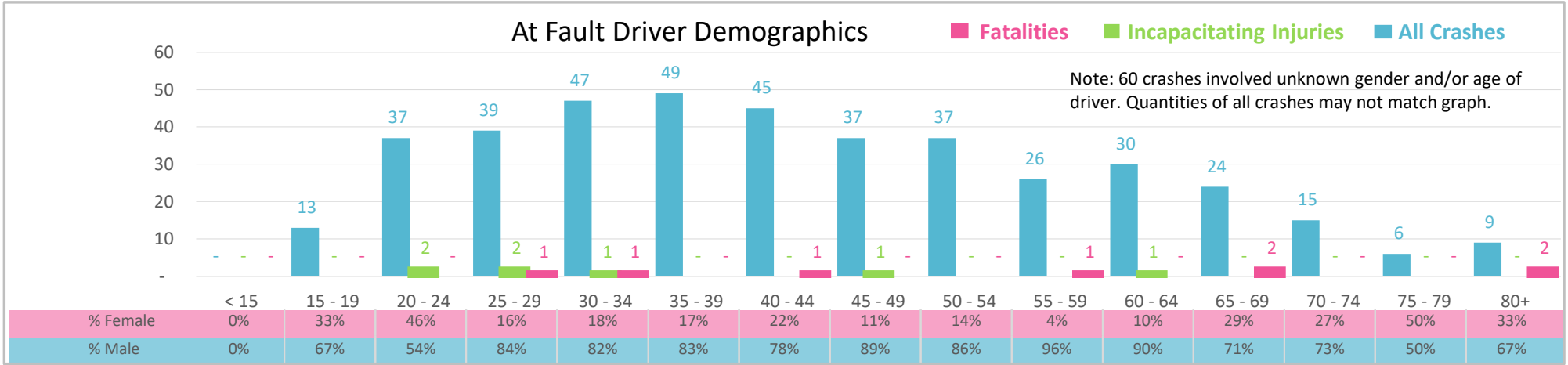




Injury Severity*	Fatal	Incapacitating	Non-Incapacitating	Possible	None/Property Damage Only	TOTAL
Crashes	6	6	32	43	387	474
People Injured	8	7	57	67	NA	139

*NOTE: Crash severity is determined from the highest injury type in the crash (i.e. if a crash had both a fatal and a serious it is determined to be a fatal crash).



- ### Key Commercial Motor Vehicle Crash Facts
- 2021 population of 279,238.
 - Driver age is distributed broadly across all age groups under 65; male drivers account for 79% of all crashes and 4 fatalities.
 - Unrestrained occupant was noted as a factor in 3% of crashes and resulted in 3 fatalities.
 - Intoxication was noted as a factor in 6 crashes and resulted in 1 fatality.
 - 34% of crashes occurred along State and US Routes with most of the remainder occurring on Freeways.
 - Other vehicle type accounted for 65% of motor vehicles involved in commercial vehicle crashes.
 - 27% of crashes occurred at night with 1 fatality.

NOTE: Fatalities and Serious Injuries in bar graphs indicate persons not crashes. | SOURCES: 2022 CARS data (unofficial at time of report). | DATE GENERATED: 4/3/2023