

District 2 Community Traffic Safety Program

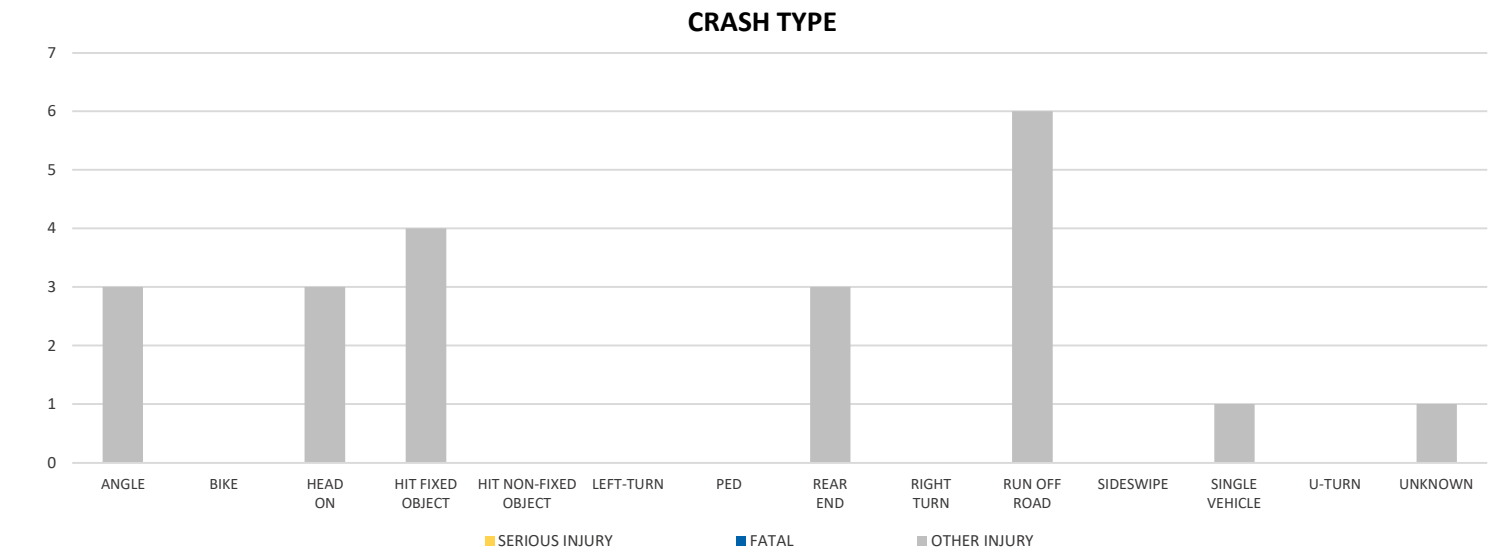
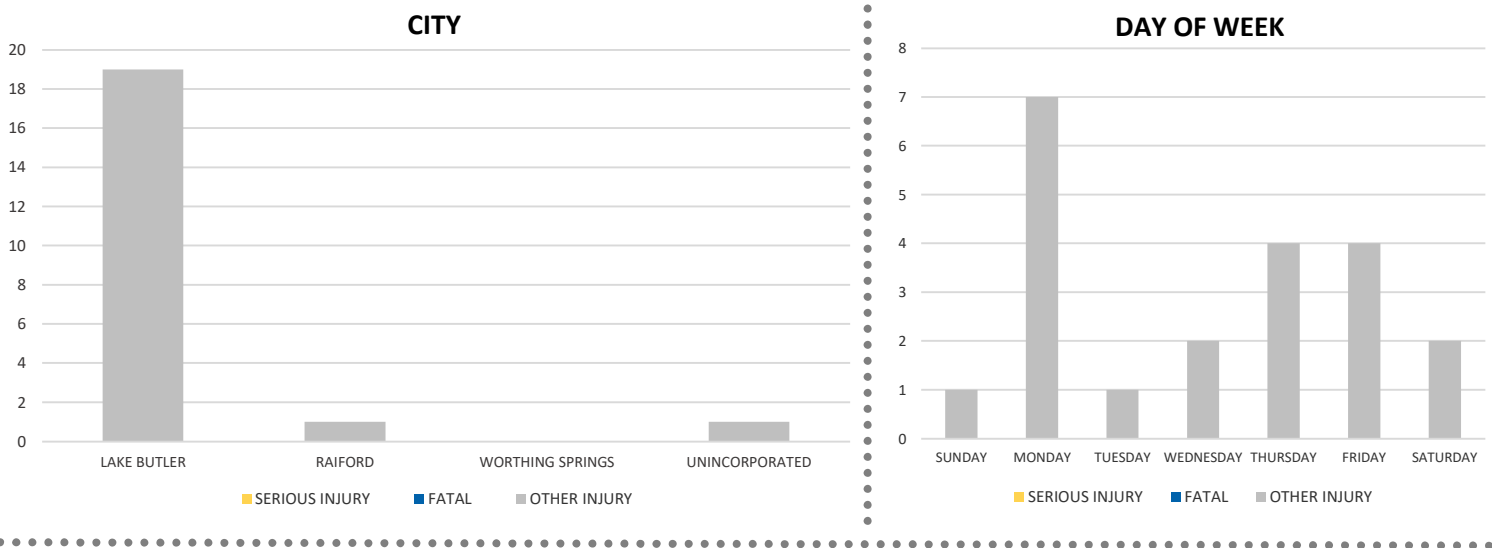
UNION COUNTY

2021 Teen Road User Crash Data Summary



Severity	UNION COUNTY					DISTRICT 2	
	Fatal	Incapacitating Injury	Non-Incapacitating Injury	Possible Injury	No Injury/Property Damage Only*	Total	
Crashes	0	0	2	12	21	35	7,091
People Injured	0	0	2	19	N/A	21	2,984

Note: Crash severity is determined from the highest injury type in the crash (i.e. if a crash had both a fatal and a serious it is determined to be a fatal crash).



NOTE: Fatal/Serious/Other Injury in bar graphs indicates persons not crashes.
 SOURCE: 2021 CARS data (unofficial at time of report)

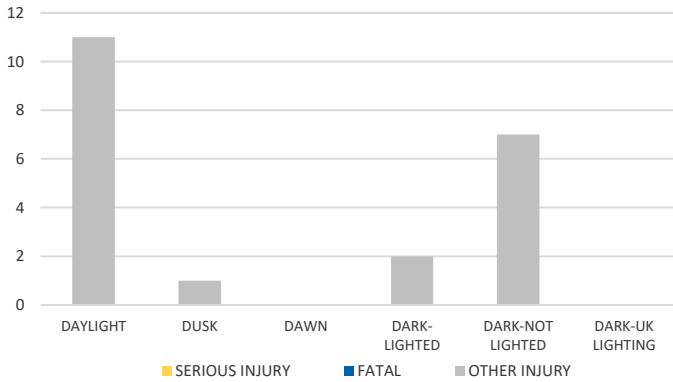
District 2 Community Traffic Safety Program

UNION COUNTY

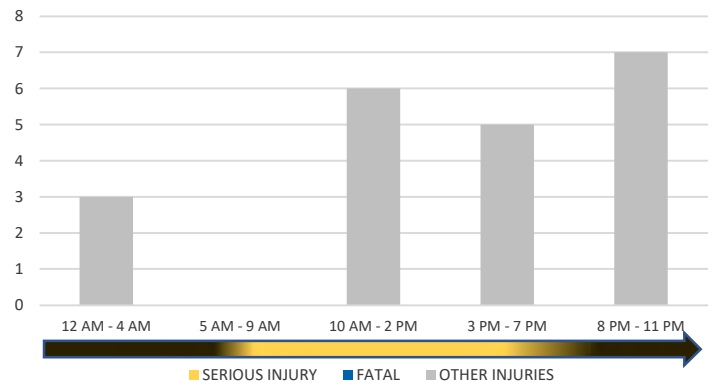
2021 Teen Road User Crash Data Summary



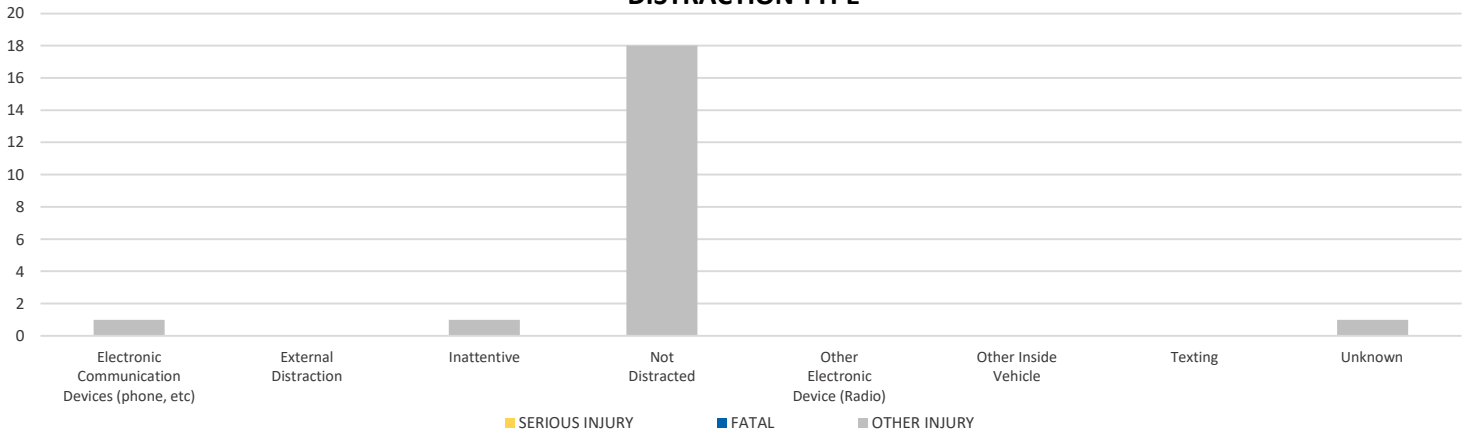
LIGHTING



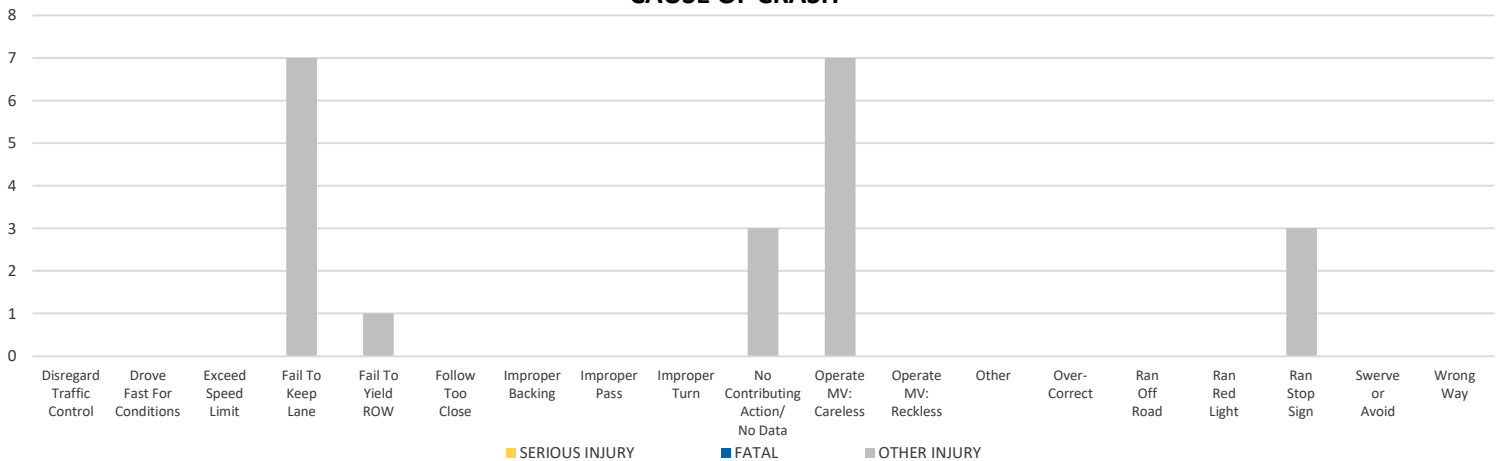
TIME OF DAY



DISTRACTION TYPE



CAUSE OF CRASH



NOTE: Fatal/Serious/Other Injury in bar graphs indicates persons not crashes.

SOURCE: 2021 CARS data (unofficial at time of report)

DATE GENERATED: 2/8/2022