

District 2 Community Traffic Safety Program

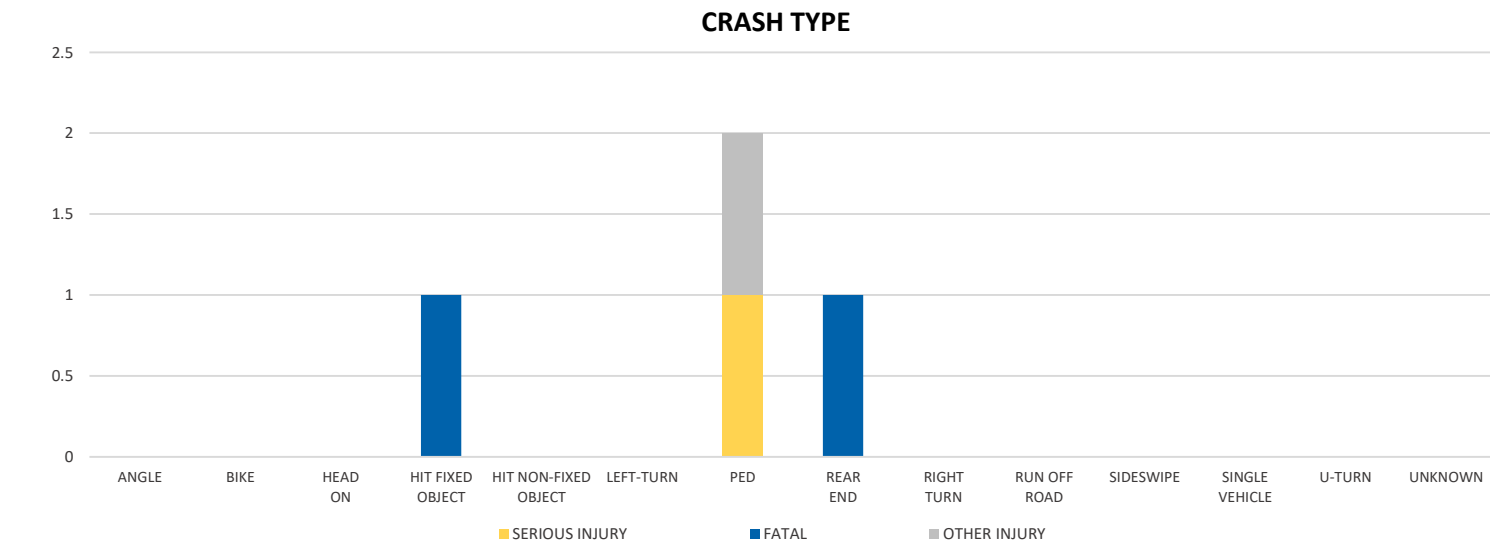
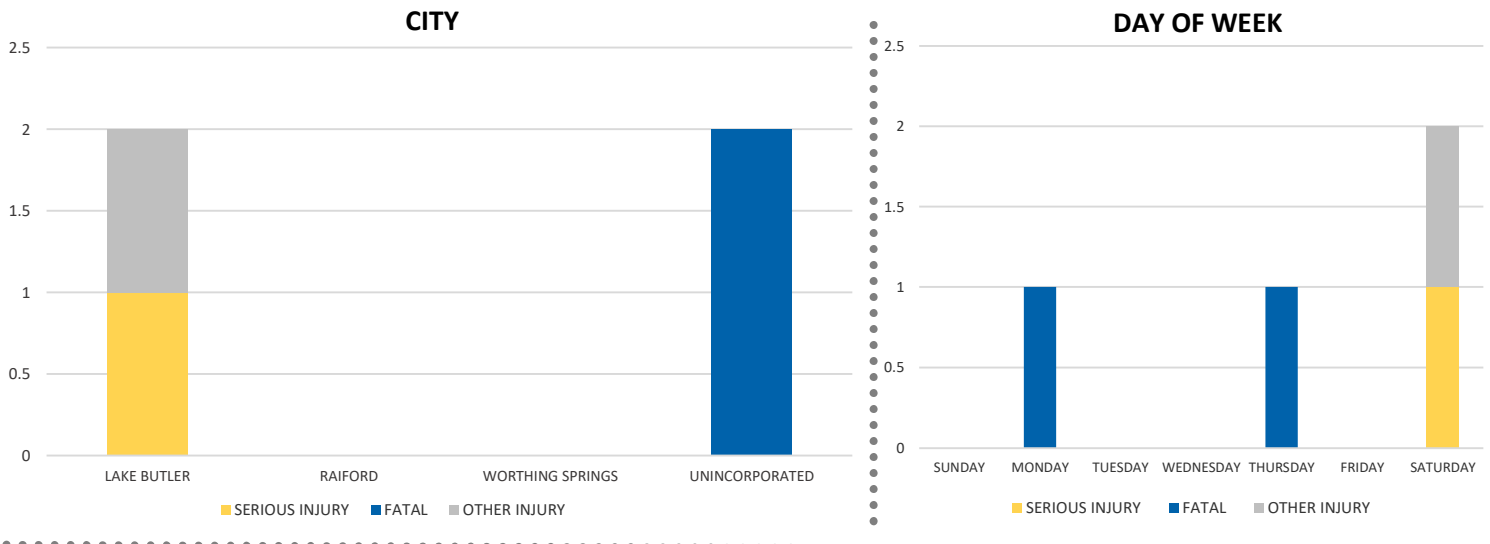
# UNION COUNTY

## 2021 Impaired Driving Crash Data Summary



| Severity       | UNION COUNTY |                       |                           |                 |                                 | DISTRICT 2 |       |
|----------------|--------------|-----------------------|---------------------------|-----------------|---------------------------------|------------|-------|
|                | Fatal        | Incapacitating Injury | Non-Incapacitating Injury | Possible Injury | No Injury/Property Damage Only* | Total      |       |
| Crashes        | 2            | 1                     | 0                         | 0               | 6                               | 9          | 2,024 |
| People Injured | 2            | 1                     | 1                         | 0               | N/A                             | 4          | 1,387 |

Note: Crash severity is determined from the highest injury type in the crash (i.e. if a crash had both a fatal and a serious it is determined to be a fatal crash).



NOTE: Fatal/Serious/Other Injury in bar graphs indicates persons not crashes.  
 SOURCE: 2021 CARS data (unofficial at time of report)

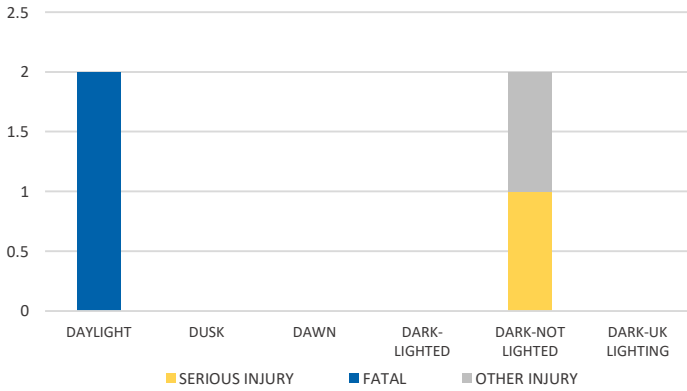
District 2 Community Traffic Safety Program

UNION COUNTY

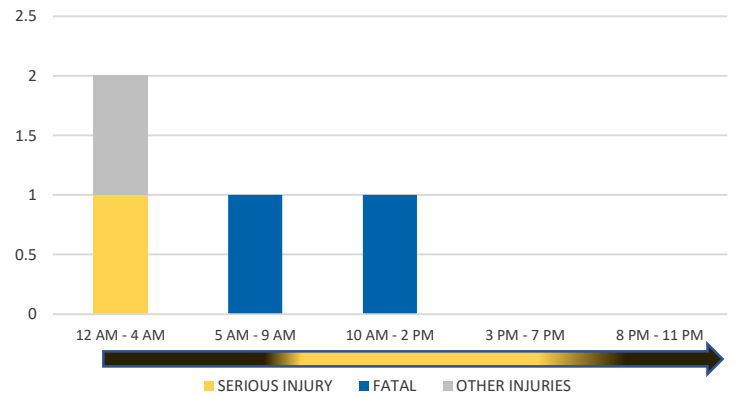
2021 Impaired Driving Crash Data Summary



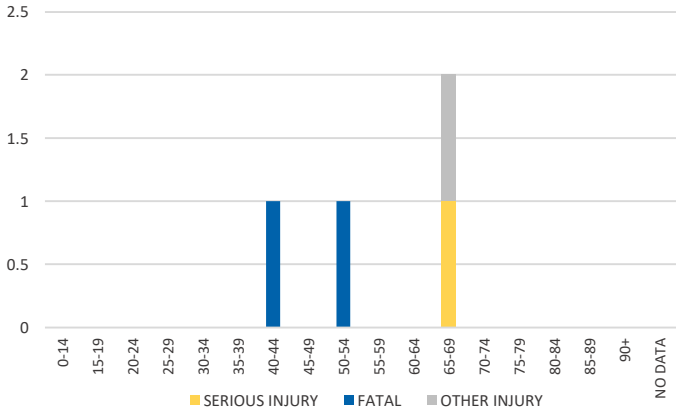
LIGHTING



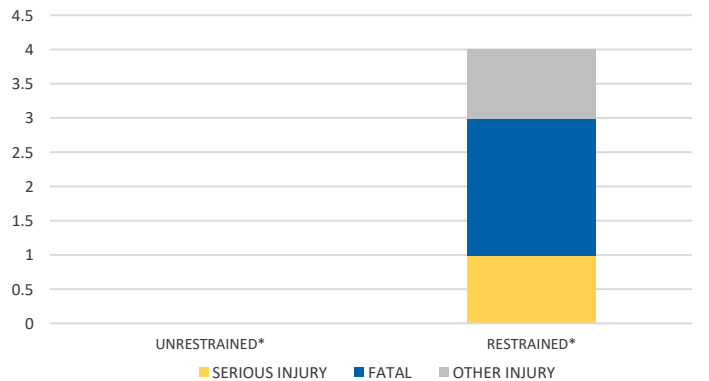
TIME OF DAY



IMPAIRED DRIVER AGE

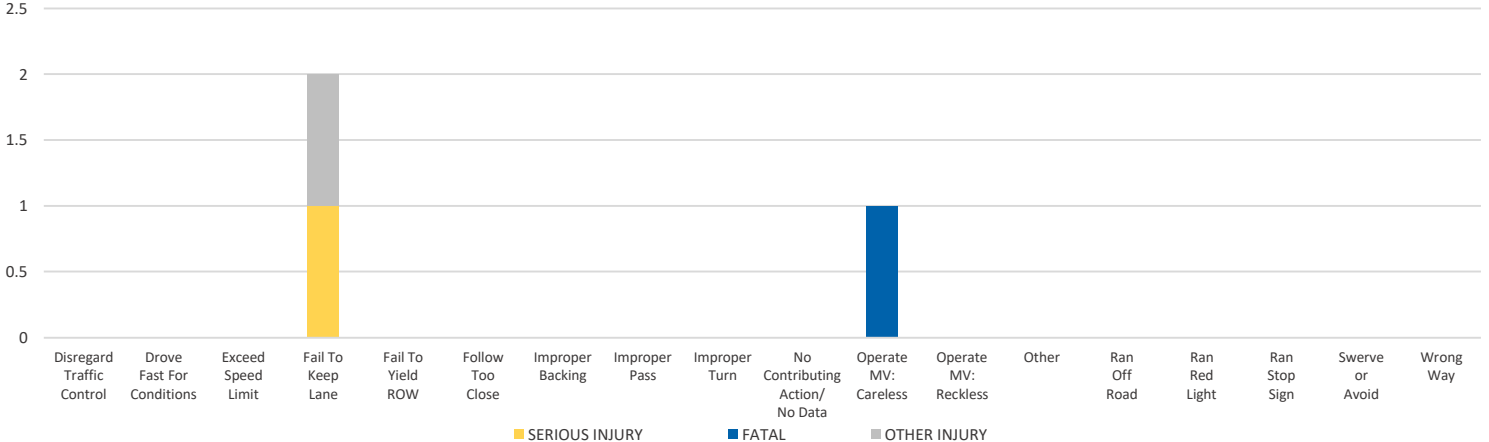


OCCUPANT PROTECTION



\*Number of injuries where at least one person was unrestrained/restrained.

CAUSE OF CRASH



NOTE: Fatal/Serious/Other Injury in bar graphs indicates persons not crashes.  
SOURCE: 2021 CARS data (unofficial at time of report)