

District 2 Community Traffic Safety Program

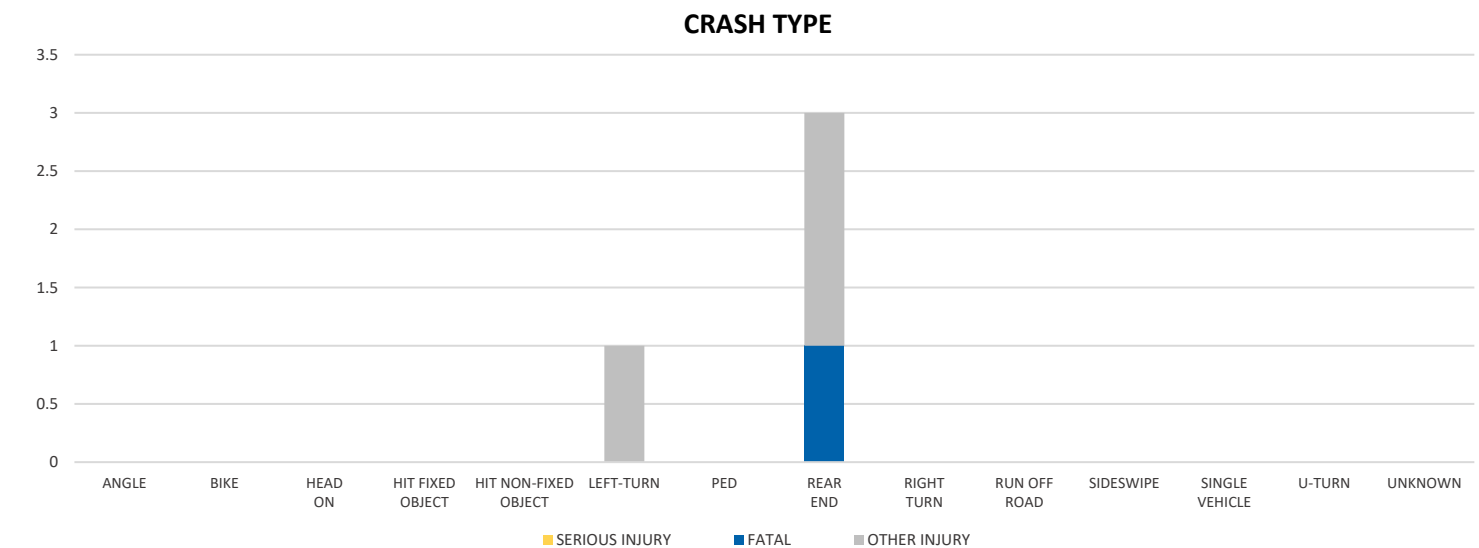
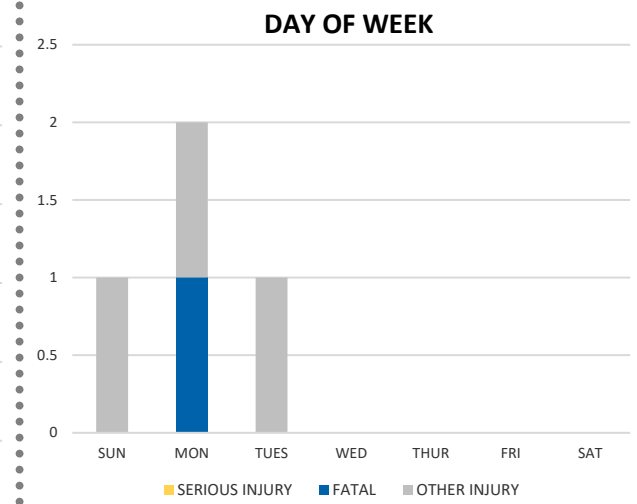
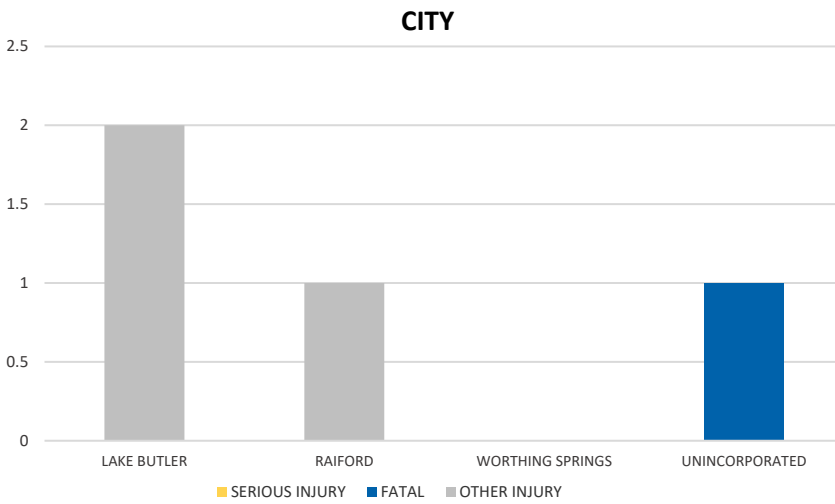
UNION COUNTY

2021 Commercial Motor Vehicle Crash Data Summary



Severity	UNION COUNTY					DISTRICT 2	
	Fatal	Incapacitating Injury	Non-Incapacitating Injury	Possible Injury	No Injury/Property Damage Only*	Total	
Crashes	1	0	1	2	14	18	4,443
People Injured	1	0	1	2	N/A	4	1,196

Note: Crash severity is determined from the highest injury type in the crash (i.e. if a crash had both a fatal and a serious it is determined to be a fatal crash).



NOTE: Fatal/Serious/Other Injury in bar graphs indicates persons not crashes.  
SOURCE: 2021 CARS data (unofficial at time of report)

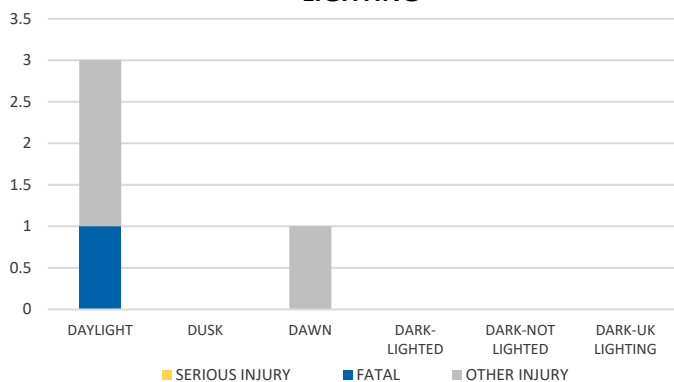
## District 2 Community Traffic Safety Program

# UNION COUNTY

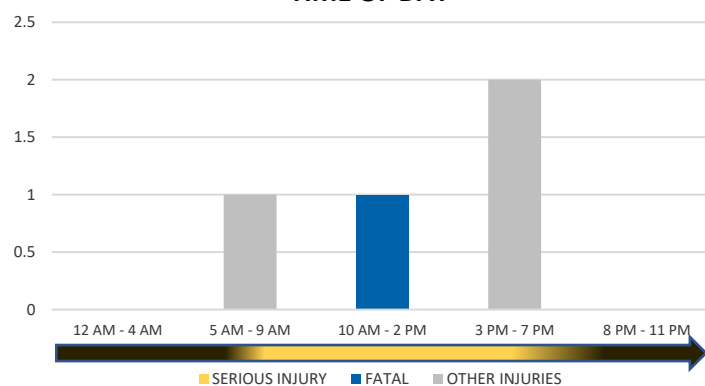
# 2021 Commercial Motor Vehicle Crash Data Summary



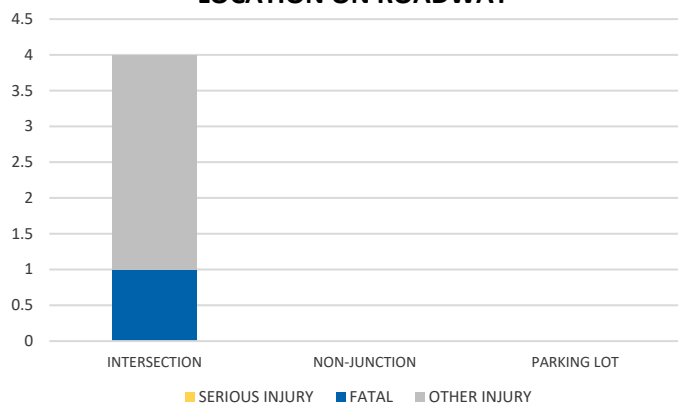
### LIGHTING



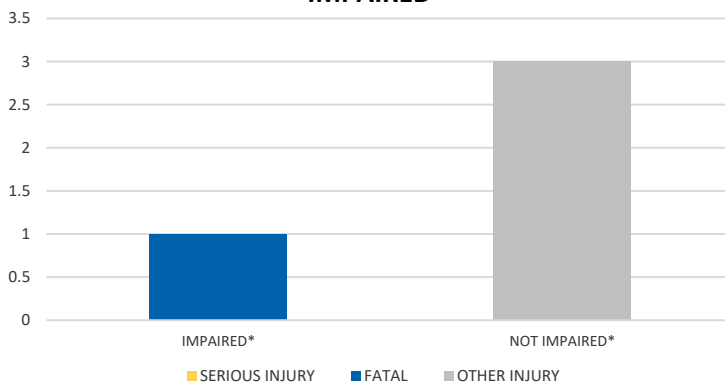
### TIME OF DAY



### LOCATION ON ROADWAY

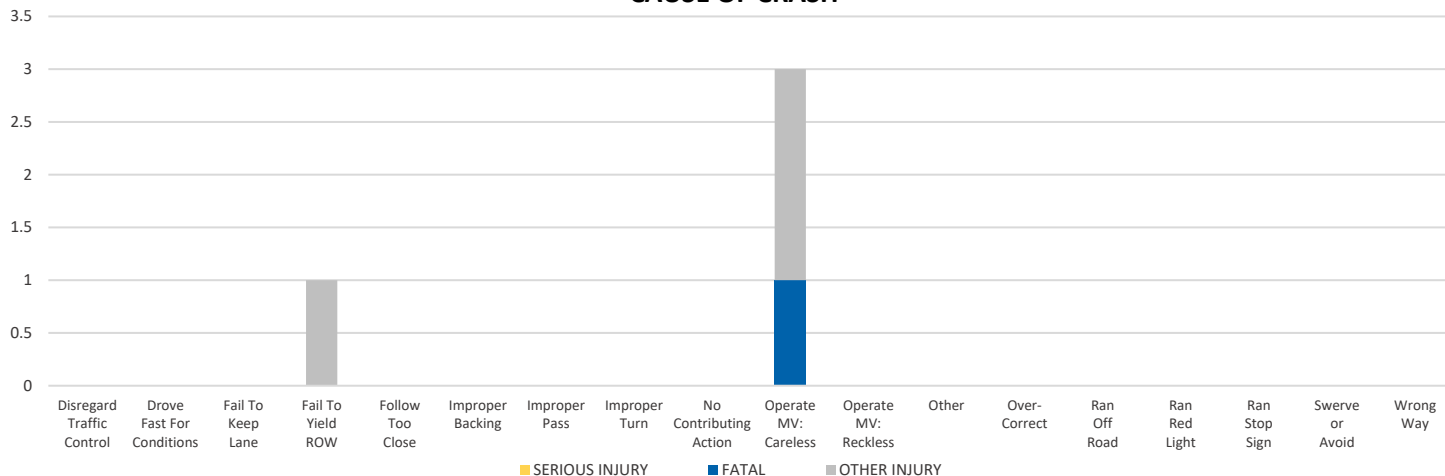


### IMPAIRED



\*Involving alcohol and/or drugs by either driver.

### CAUSE OF CRASH



NOTE: Fatal/Serious/Other Injury in bar graphs indicates persons not crashes.

SOURCE: 2021 CARS data (unofficial at time of report)

DATE GENERATED: 1/31/2022