

District 2 Community Traffic Safety Program

TAYLOR COUNTY

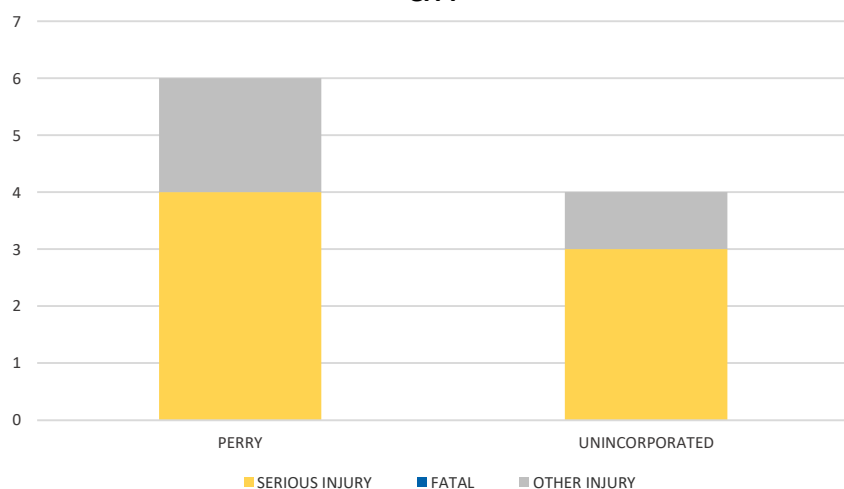
2021 Motorcycle Crash Data Summary



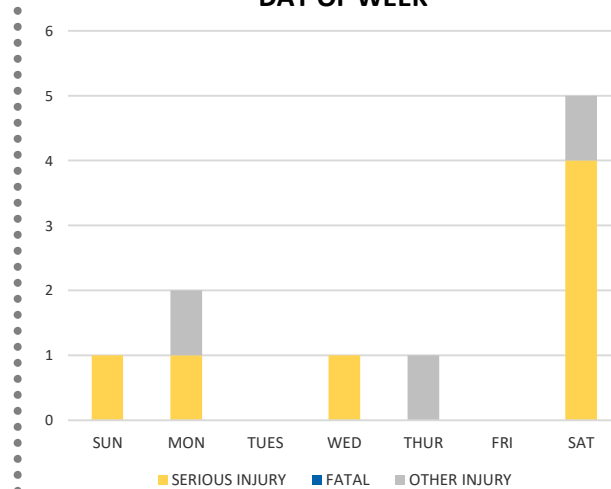
Severity	TAYLOR COUNTY					DISTRICT 2	
	Fatal	Incapacitating Injury	Non-Incapacitating Injury	Possible Injury	No Injury/Property Damage Only*	Total	
Crashes	0	6	1	1	0	8	10,017
People Injured	0	7	1	2	N/A	10	8,751

Note: Crash severity is determined from the highest injury type in the crash (i.e. if a crash had both a fatal and a serious it is determined to be a fatal crash).

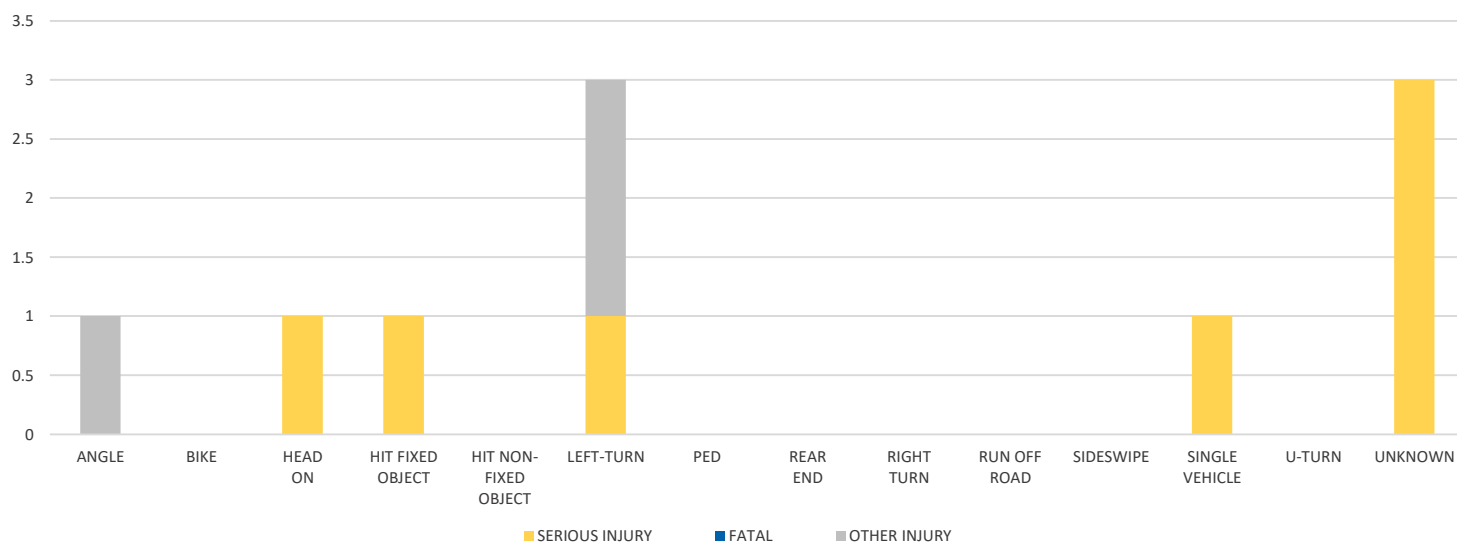
CITY



DAY OF WEEK



CRASH TYPE



NOTE: Fatal/Serious/Other Injury in bar graphs indicates persons not crashes.
SOURCE: 2021 CARS data (unofficial at time of report)

District 2 Community Traffic Safety Program

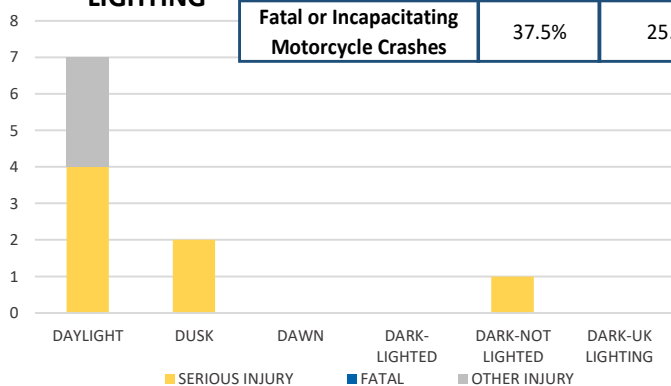
TAYLOR COUNTY

2021 Motorcycle Crash Data Summary

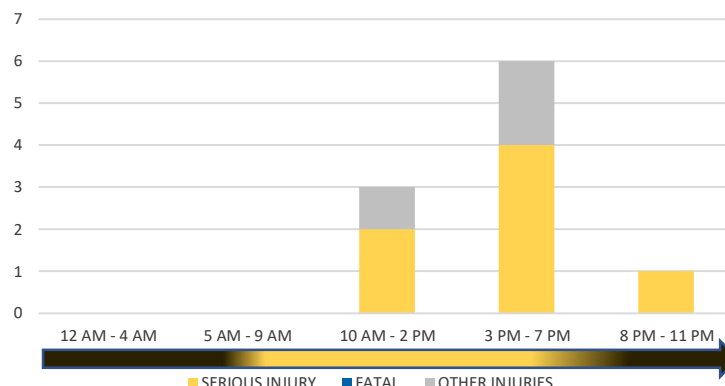


	Daylight	NOT Daylight
All Motorcycle Crashes	62.5%	37.5%
Fatal or Incapacitating Motorcycle Crashes	37.5%	25.0%

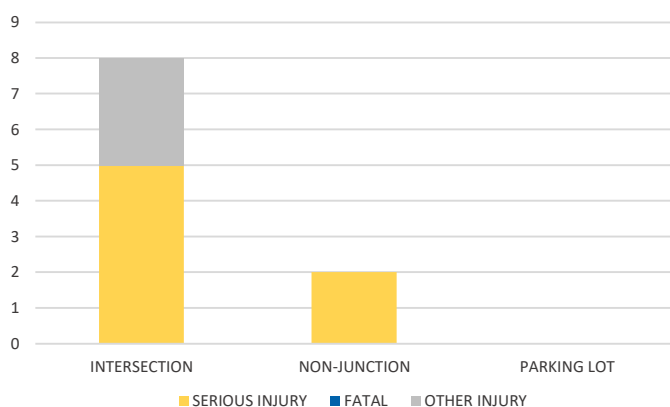
LIGHTING



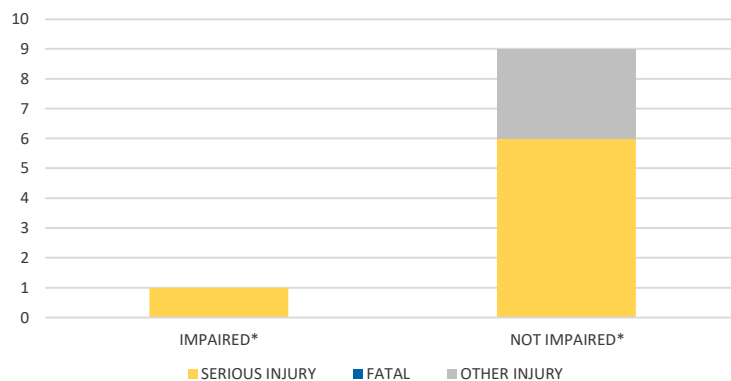
TIME OF DAY



LOCATION ON ROADWAY

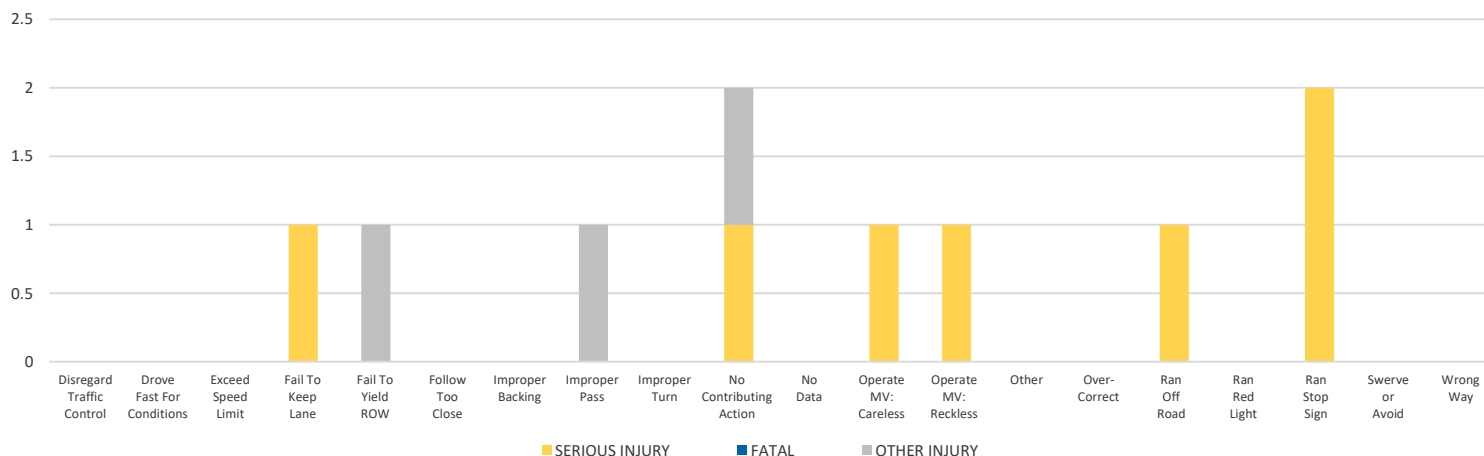


IMPAIRED



*Involving alcohol and/or drugs by either driver.

AT-FAULT CAUSE OF CRASH



NOTE: Fatal/Serious/Other Injury in bar graphs indicates persons not crashes.

SOURCE: 2021 CARS data (unofficial at time of report)

DATE GENERATED: 1/10/2022