

District 2 Community Traffic Safety Program

TAYLOR COUNTY

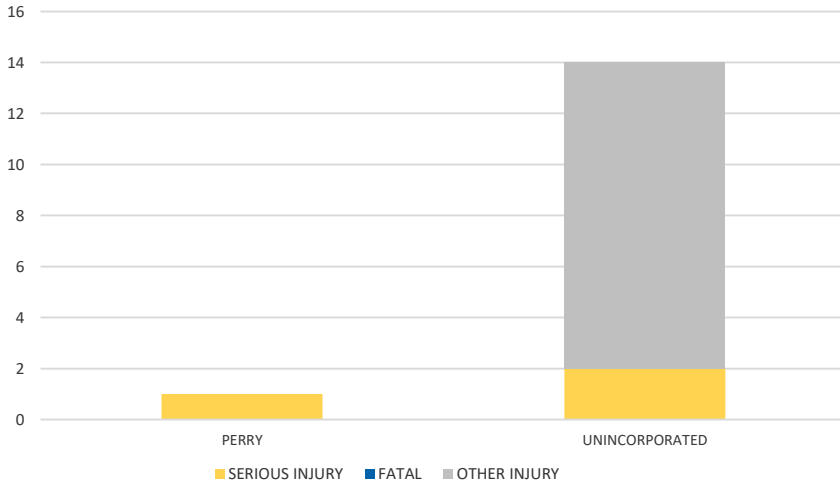
2021 Impaired Driving Crash Data Summary



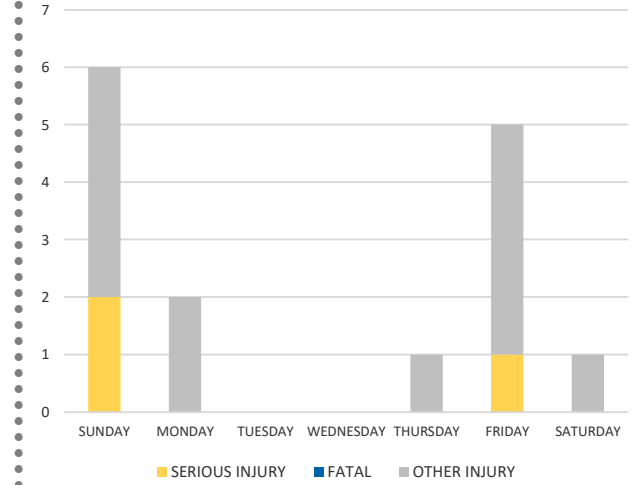
Severity	TAYLOR COUNTY					DISTRICT 2	
	Fatal	Incapacitating Injury	Non-Incapacitating Injury	Possible Injury	No Injury/Property Damage Only*	Total	
Crashes	0	3	6	5	17	31	2,024
People Injured	0	3	6	6	N/A	15	1,387

Note: Crash severity is determined from the highest injury type in the crash (i.e. if a crash had both a fatal and a serious it is determined to be a fatal crash).

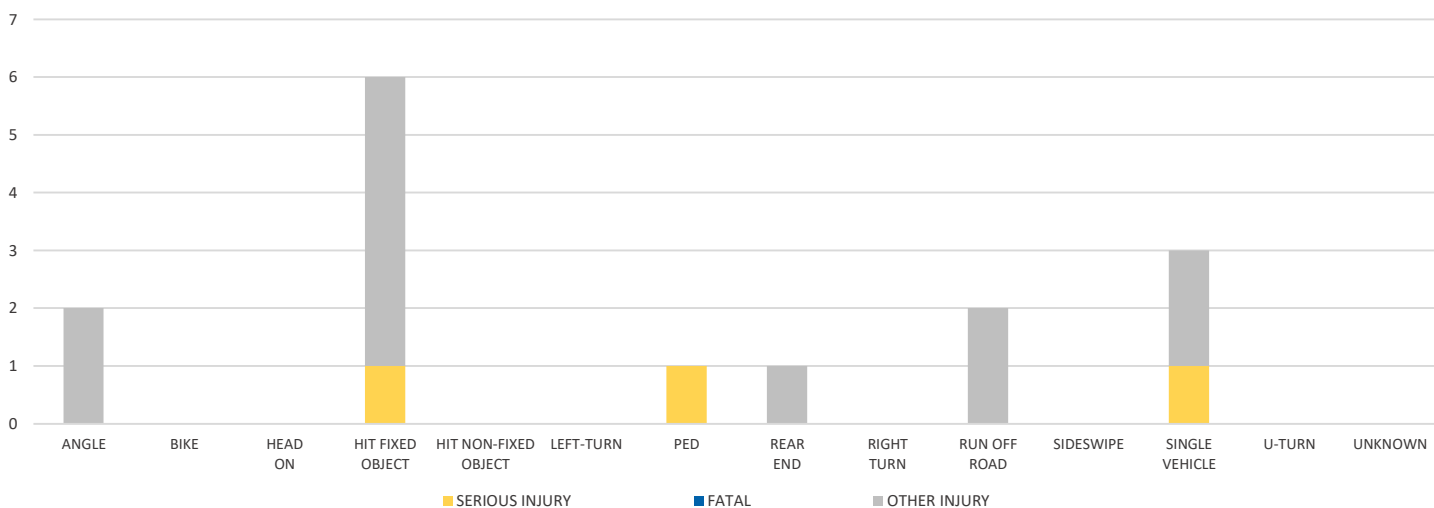
CITY



DAY OF WEEK



CRASH TYPE



NOTE: Fatal/Serious/Other Injury in bar graphs indicates persons not crashes.
SOURCE: 2021 CARS data (unofficial at time of report)

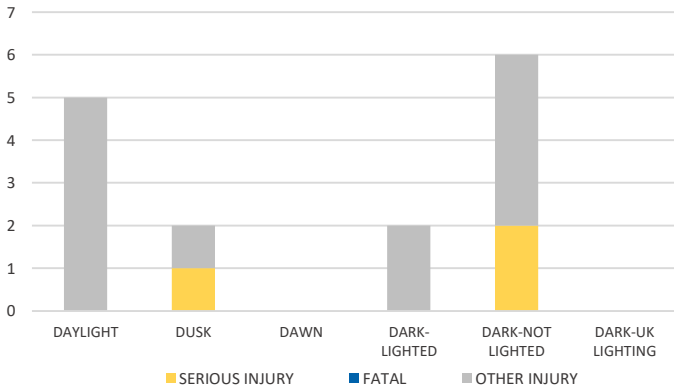
District 2 Community Traffic Safety Program

TAYLOR COUNTY

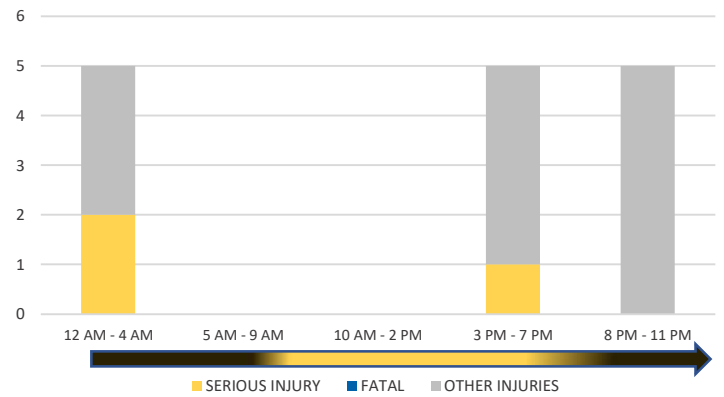
2021 Impaired Driving Crash Data Summary



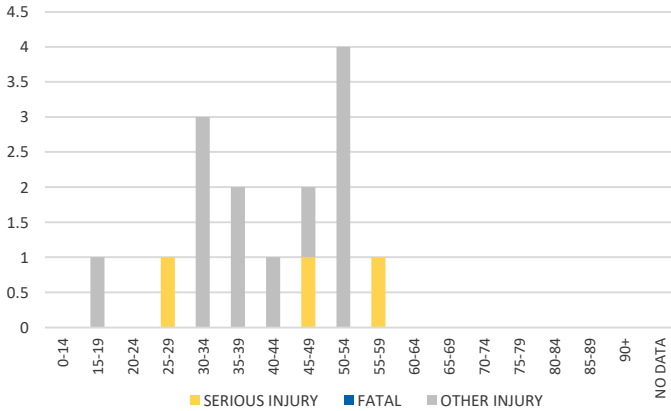
LIGHTING



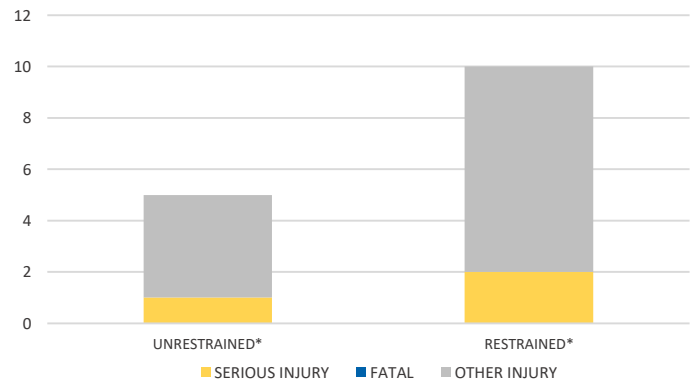
TIME OF DAY



IMPAIRED DRIVER AGE

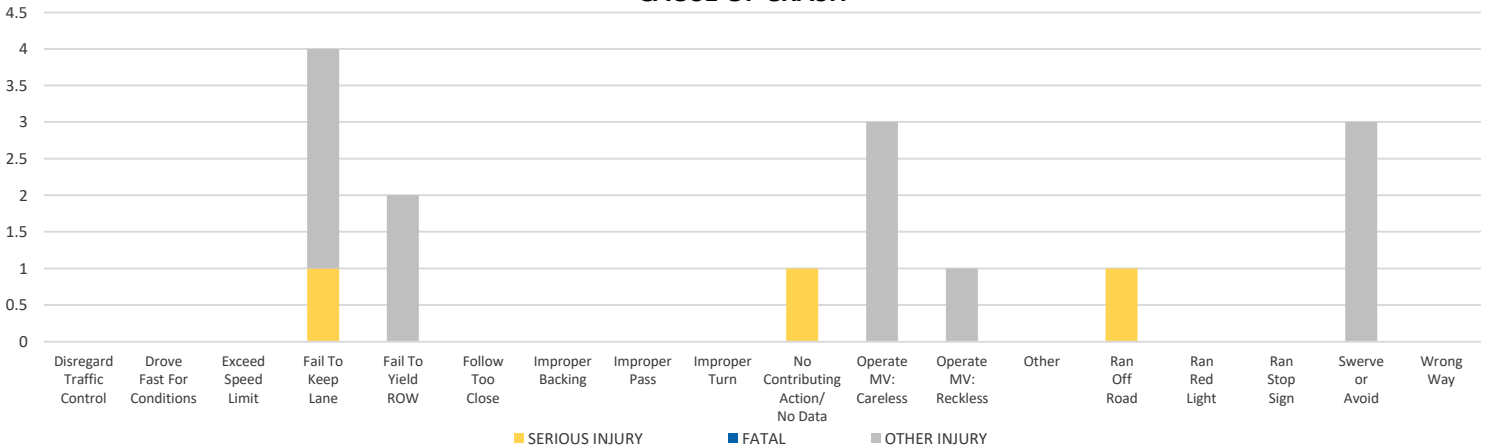


OCCUPANT PROTECTION



*Number of injuries where at least one person was unrestrained/restrained.

CAUSE OF CRASH



NOTE: Fatal/Serious/Other Injury in bar graphs indicates persons not crashes.

SOURCE: 2021 CARS data (unofficial at time of report)

DATE GENERATED: 2/10/2022