

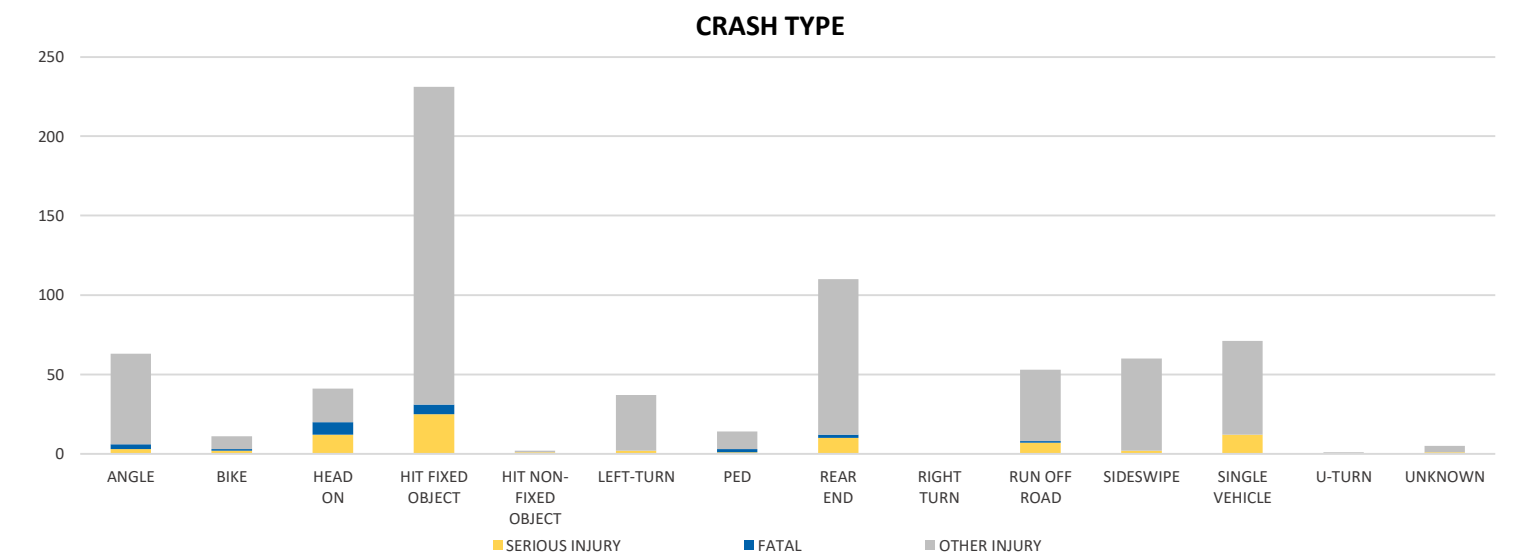
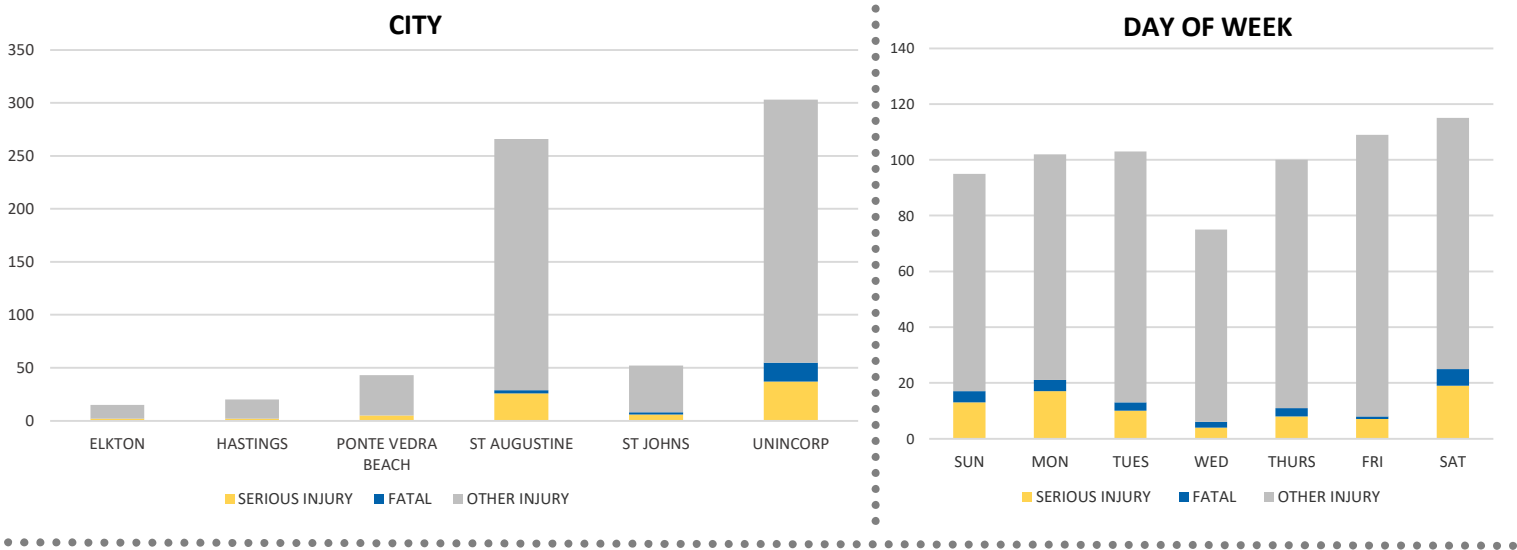
District 2 Community Traffic Safety Program

ST JOHNS COUNTY 2021 Lane Departure Crash Data Summary



Severity	St Johns County					District 2	
	Fatal	Incapacitating Injury	Non-Incapacitating Injury	Possible Injury	No Injury/Property Damage Only*	Total	
Crashes	19	64	173	206	2,169	2,631	26,257
People Injured	23	78	255	343	N/A	699	8,271

Note: Crash severity is determined from the highest injury type in the crash (i.e. if a crash had both a fatal and a serious it is determined to be a fatal crash).



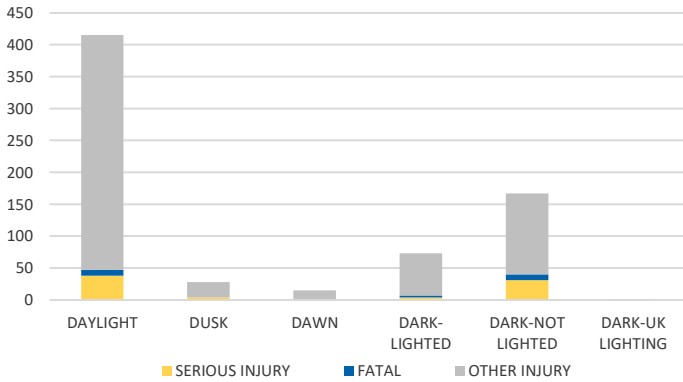
NOTE: Fatal/Serious/Other Injury in bar graphs indicates persons not crashes.
SOURCE: 2021 CARS data (unofficial at time of report)

District 2 Community Traffic Safety Program

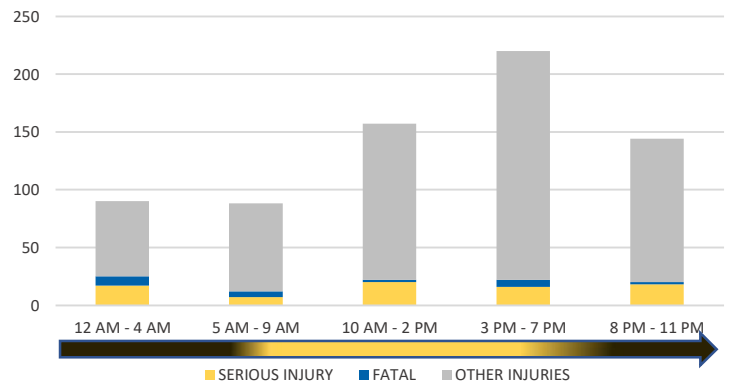
ST JOHNS COUNTY 2021 Lane Departure Crash Data Summary



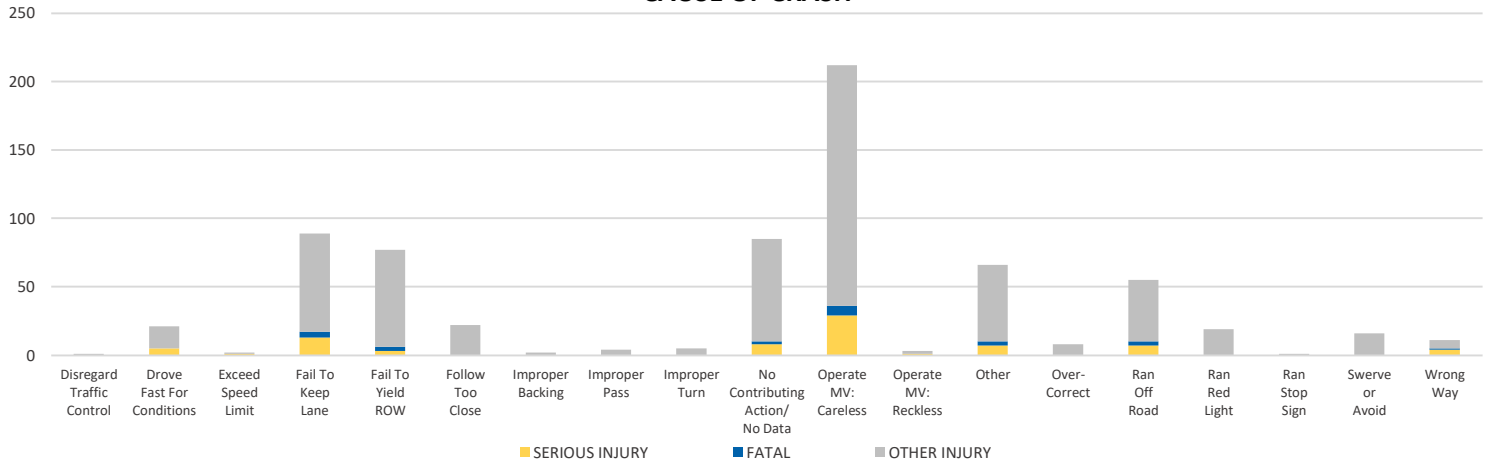
LIGHTING



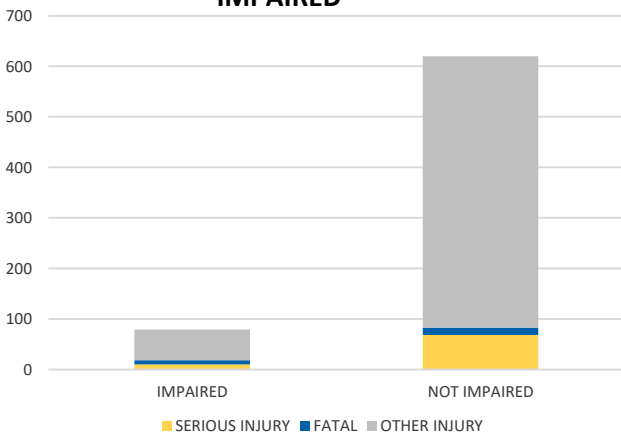
TIME OF DAY



CAUSE OF CRASH



IMPAIRED



ROAD CLASSIFICATION	2-LANE	MULTILANE	OTHER	TOTAL
INTERSTATE/EXPRESSWAY	N/A	373	N/A	373
URBAN	93	119	N/A	212
SUBURBAN	6	21	N/A	27
RURAL	25	26	N/A	51
PARKING LOT	N/A	N/A	686	686
UNDOCUMENTED	N/A	N/A	1,274	1,274
ON- & OFF-RAMP	N/A	N/A	8	8
TOTAL	124	539	1,968	2,631

NOTE: Fatal/Serious/Other Injury in bar graphs indicates persons not crashes.
SOURCE: 2021 CARS data (unofficial at time of report)