

District 2 Community Traffic Safety Program



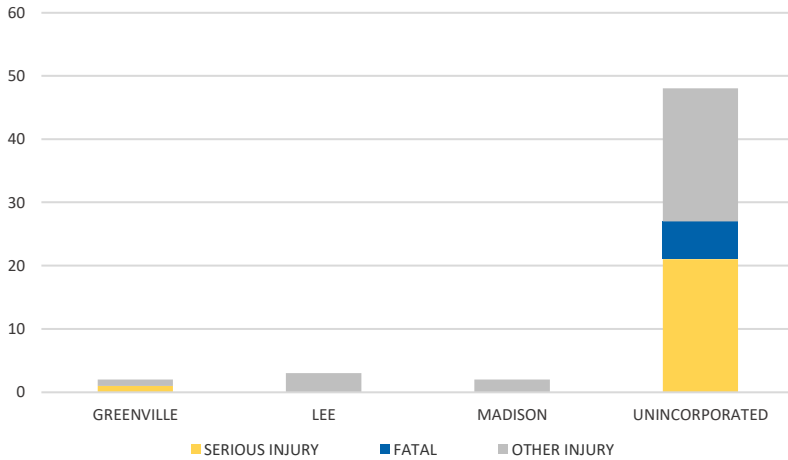
# MADISON COUNTY

## 2021 Rural Road Crash Data Summary

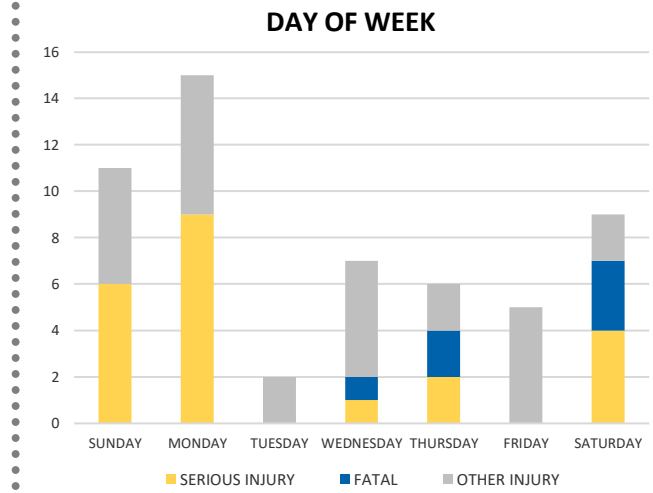
Severity	Madison					District 2	
	Fatal	Incapacitating Injury	Non-Incapacitating Injury	Possible Injury	No Injury/ Property Damage Only	Total	
Crashes	5	13	5	8	61	92	3,030
People Injured	6	22	13	14	N/A	55	2,061

Note: Crash severity is determined from the highest injury type in the crash (i.e. if a crash had both a fatal and a serious it is determined to be a fatal crash).

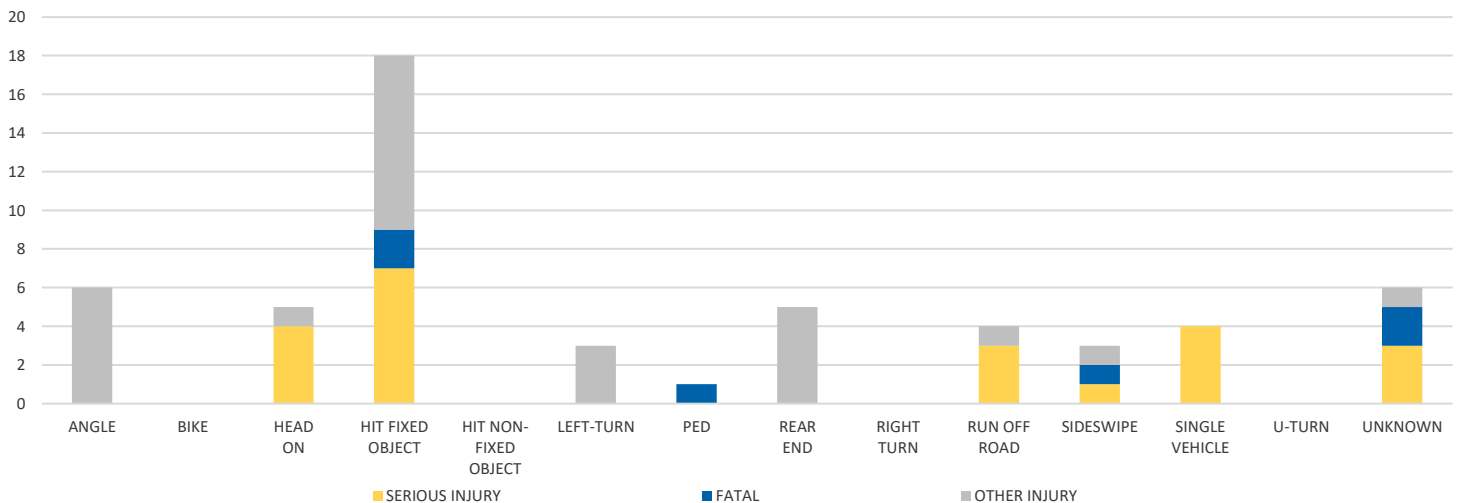
CITY



DAY OF WEEK



CRASH TYPE



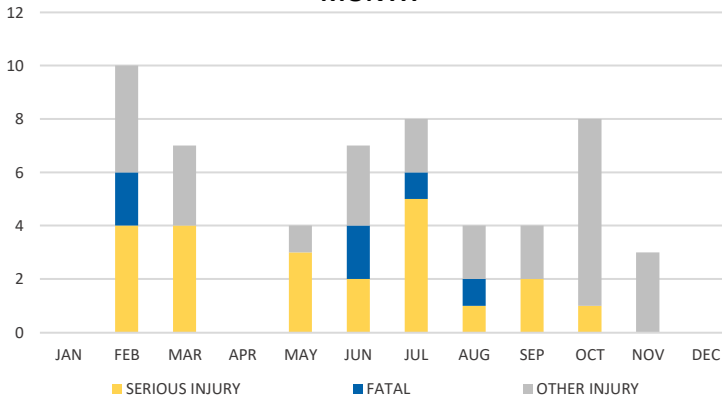
NOTE: Fatal/Serious/Other Injury in bar graphs indicates persons not crashes.  
 SOURCES: 2021 CARS data (unofficial at time of report)

District 2 Community Traffic Safety Program

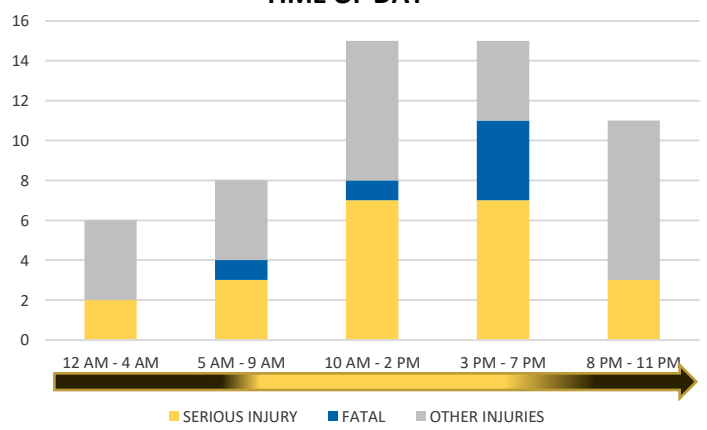
# MADISON COUNTY 2021 Rural Road Crash Data Summary



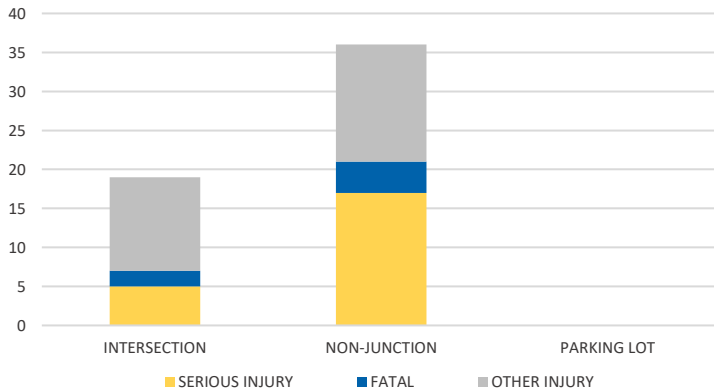
**MONTH**



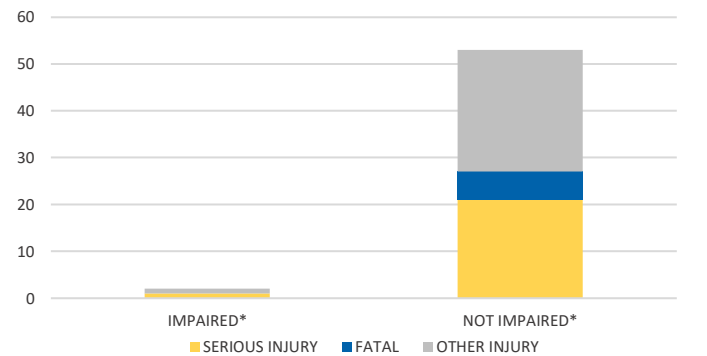
**TIME OF DAY**



**LOCATION ON ROADWAY**



**IMPAIRED**



\*Involving alcohol and/or drugs either driver.

**LIGHTING**



NOTE: Fatal/Serious/Other Injury in bar graphs indicates persons not crashes.  
SOURCES: 2021 CARS data (unofficial at time of report)