

District 2 Community Traffic Safety Program



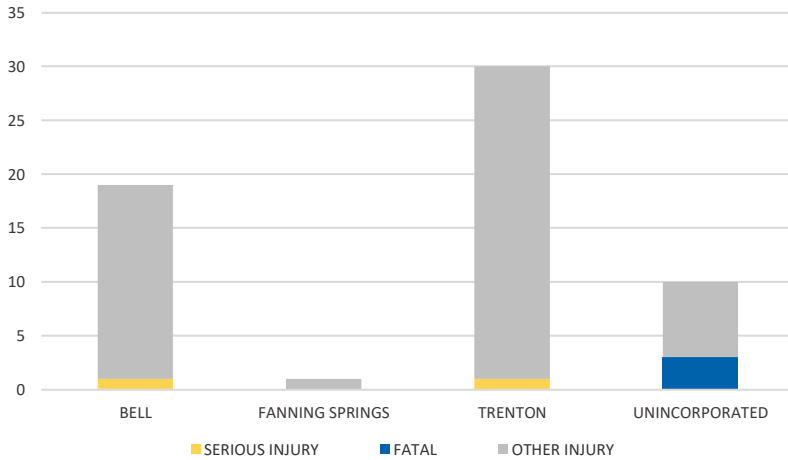
GILCHRIST COUNTY

2021 Rural Road Crash Data Summary

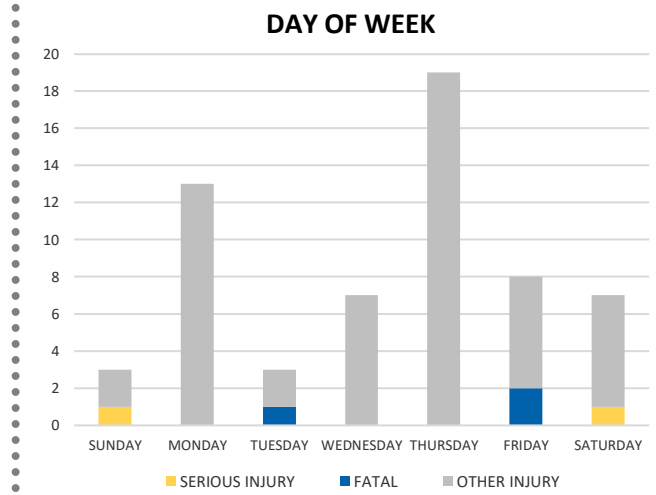
Severity	Gilchrist					District 2	
	Fatal	Incapacitating Injury	Non-Incapacitating Injury	Possible Injury	No Injury/ Property Damage Only	Total	
Crashes	3	2	10	23	60	98	3,030
People Injured	3	2	12	43	N/A	60	2,061

Note: Crash severity is determined from the highest injury type in the crash (i.e. if a crash had both a fatal and a serious it is determined to be a fatal crash).

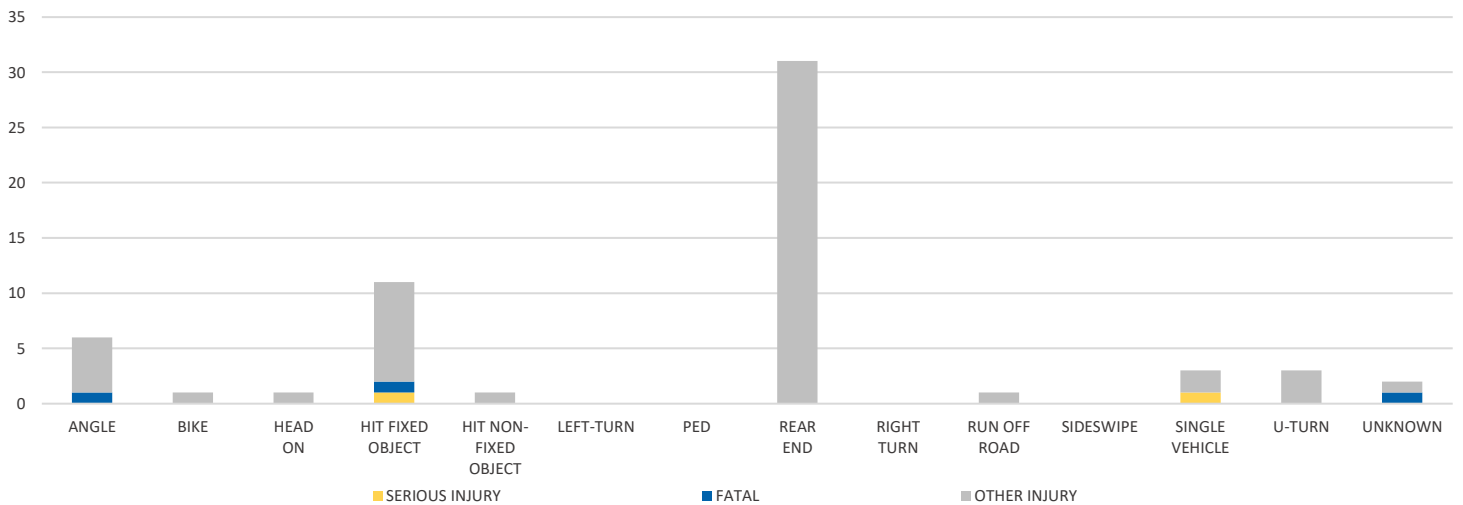
CITY



DAY OF WEEK



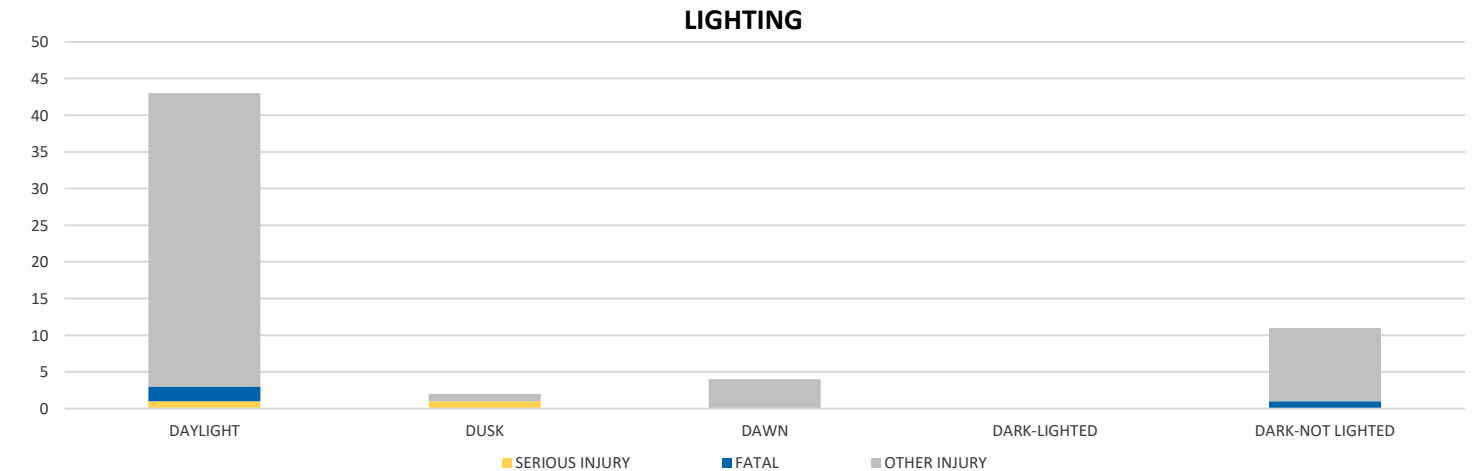
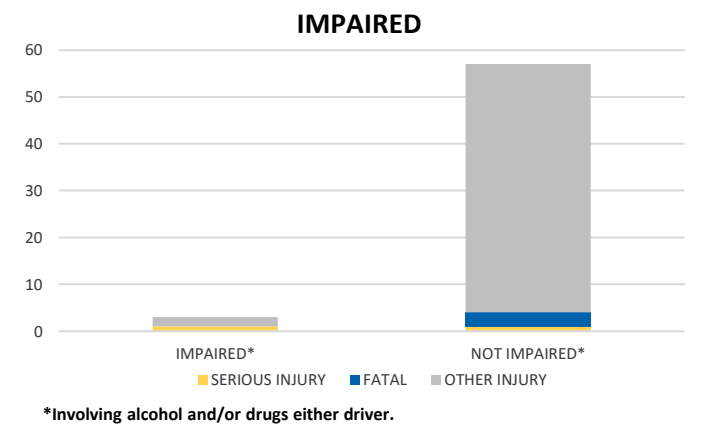
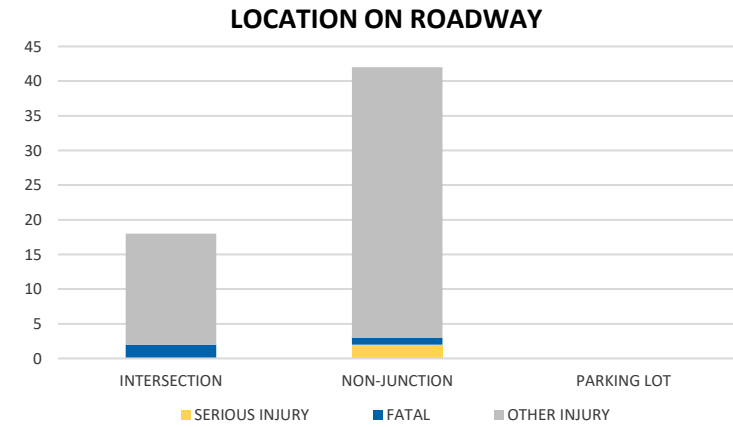
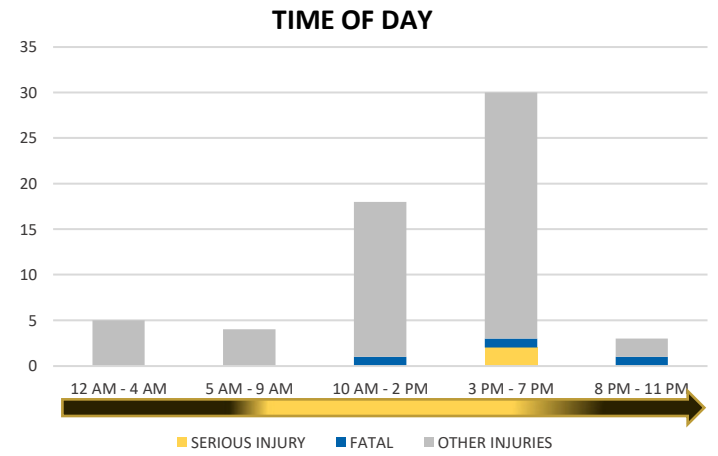
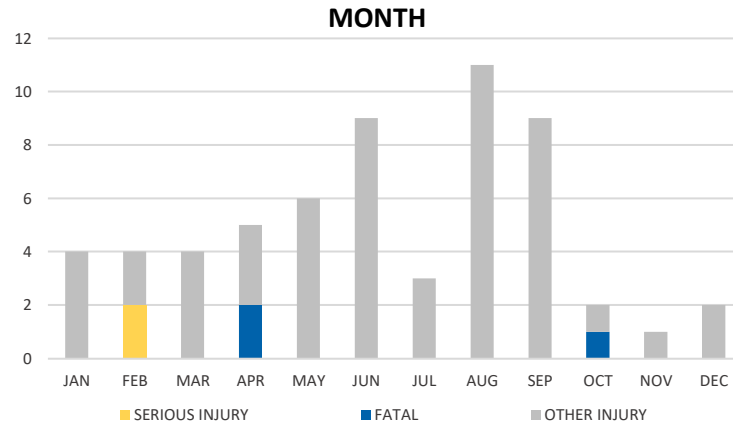
CRASH TYPE



NOTE: Fatal/Serious/Other Injury in bar graphs indicates persons not crashes.
 SOURCES: 2021 CARS data (unofficial at time of report)

District 2 Community Traffic Safety Program

GILCHRIST COUNTY 2021 Rural Road Crash Data Summary



NOTE: Fatal/Serious/Other Injury in bar graphs indicates persons not crashes.
 SOURCES: 2021 CARS data (unofficial at time of report)