

District 2 Community Traffic Safety Program

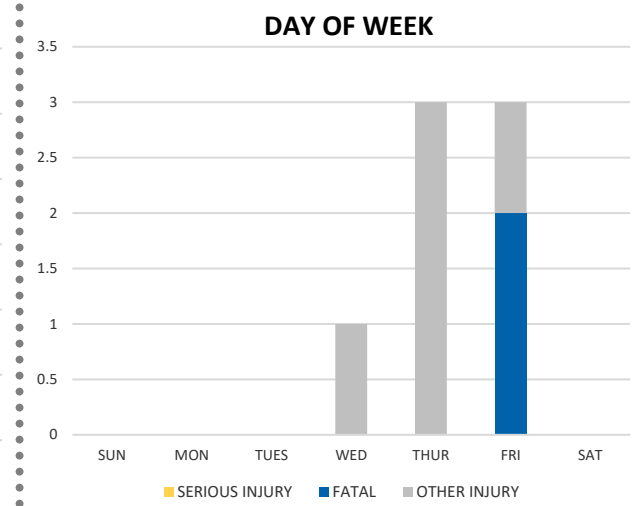
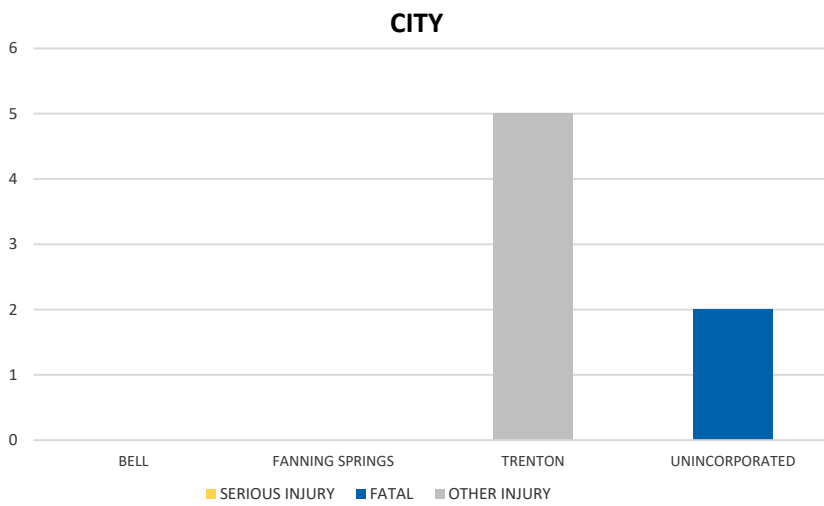
GILCHRIST COUNTY

2021 Commercial Motor Vehicle Crash Data Summary

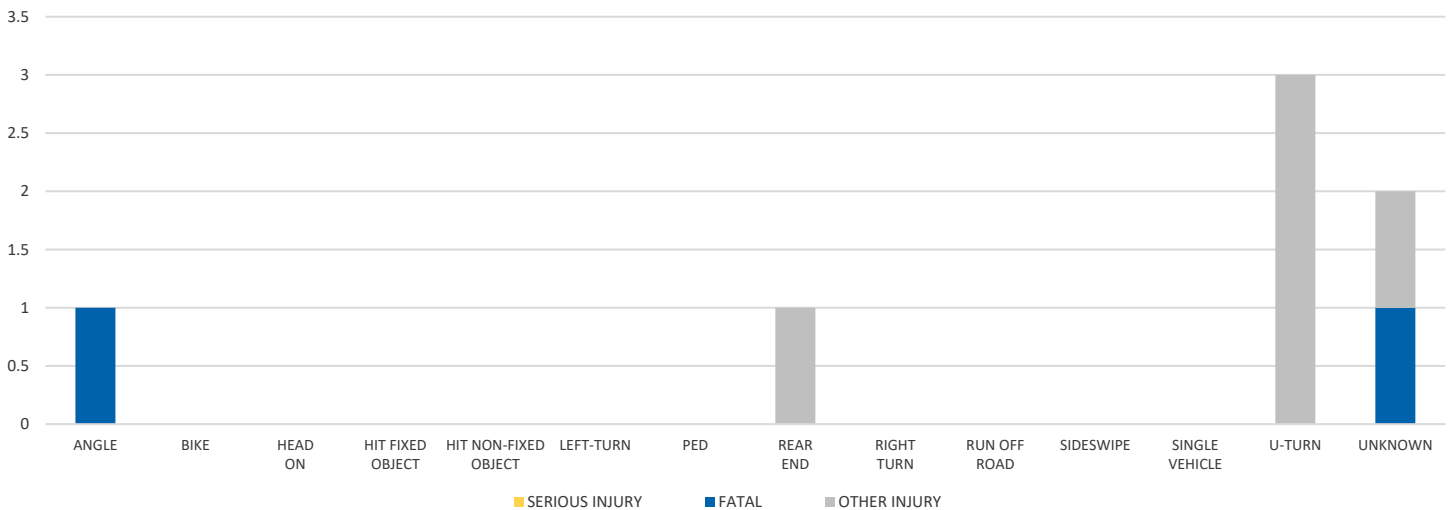


GILCHRIST COUNTY							DISTRICT 2	
Severity	Fatal	Incapacitating Injury	Non-Incapacitating Injury	Possible Injury	No Injury/Property Damage Only*	Total		
Crashes	2	0	0	3	13	18	4,443	
People Injured	2	0	0	5	N/A	7	1,196	

Note: Crash severity is determined from the highest injury type in the crash (i.e. if a crash had both a fatal and a serious it is determined to be a fatal crash).



CRASH TYPE



NOTE: Fatal/Serious/Other Injury in bar graphs indicates persons not crashes.

SOURCE: 2021 CARS data (unofficial at time of report)

DATE GENERATED: 1/31/2022

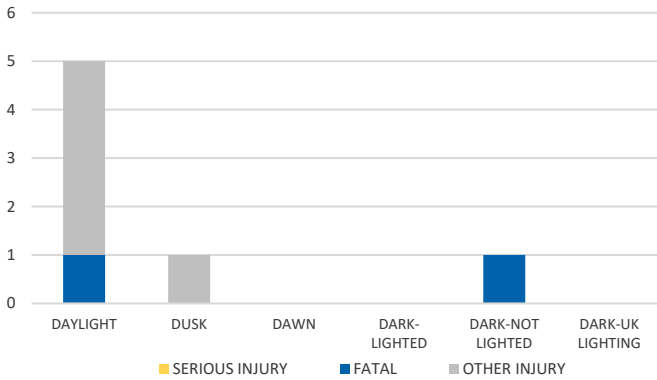
District 2 Community Traffic Safety Program

GILCHRIST COUNTY

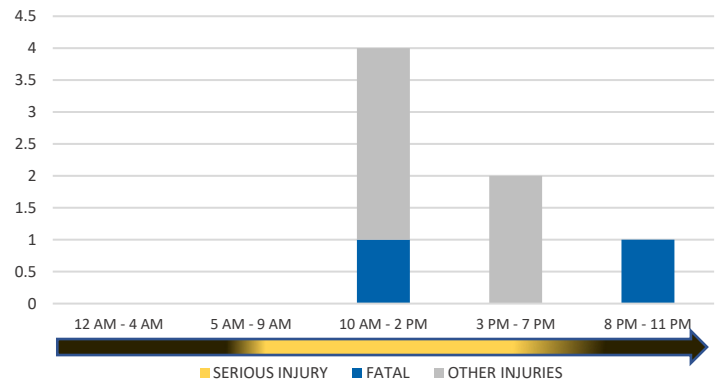
2021 Commercial Motor Vehicle Crash Data Summary



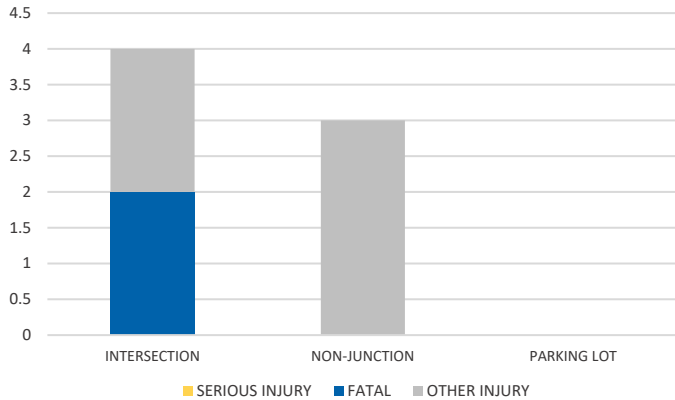
LIGHTING



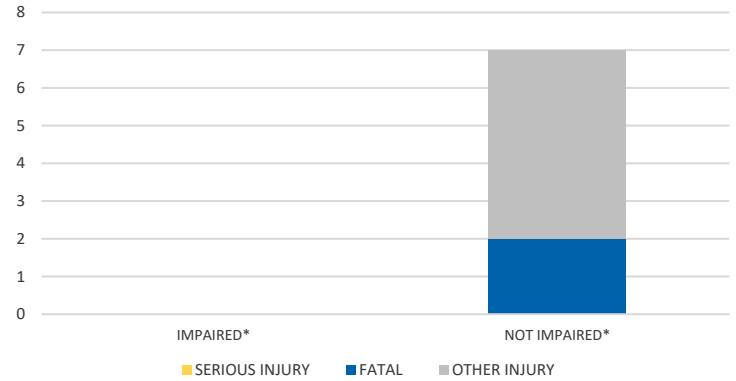
TIME OF DAY



LOCATION ON ROADWAY

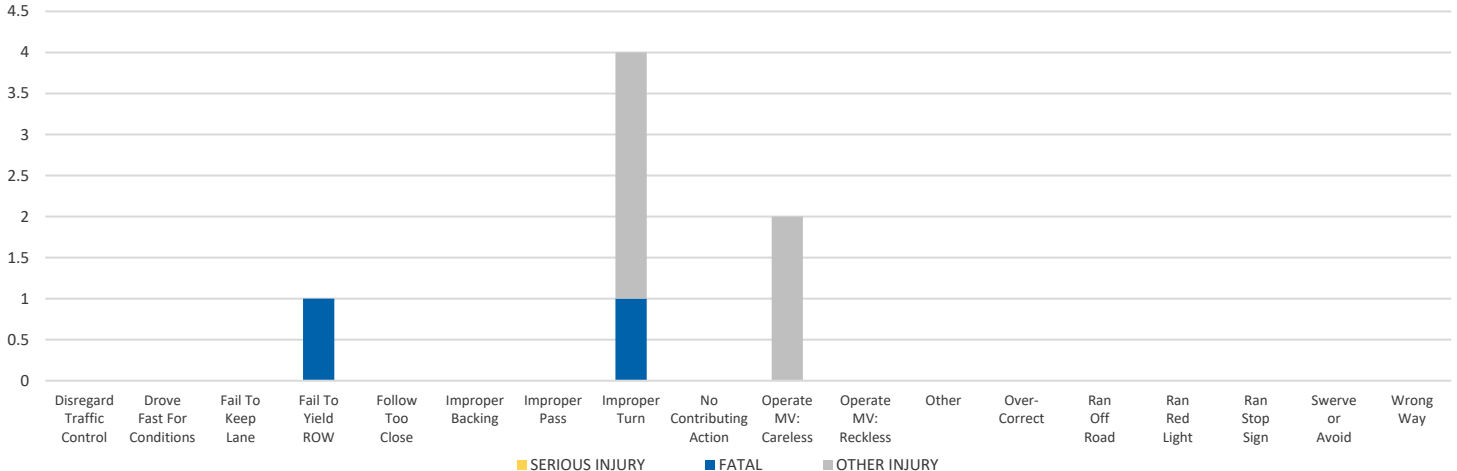


IMPAIRED



*Involving alcohol and/or drugs by either driver.

CAUSE OF CRASH



NOTE: Fatal/Serious/Other Injury in bar graphs indicates persons not crashes.

SOURCE: 2021 CARS data (unofficial at time of report)

DATE GENERATED: 1/31/2022