

## District 2 Community Traffic Safety Program

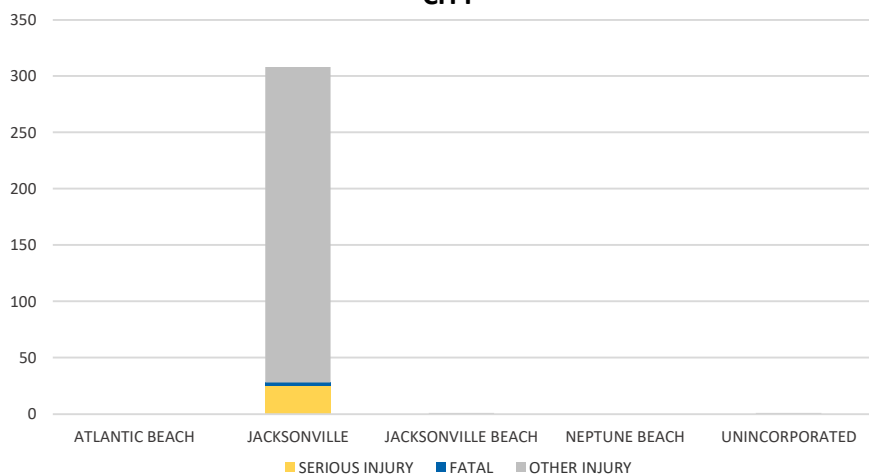
# DUVAL COUNTY 2021 Work Zone Crash Data Summary



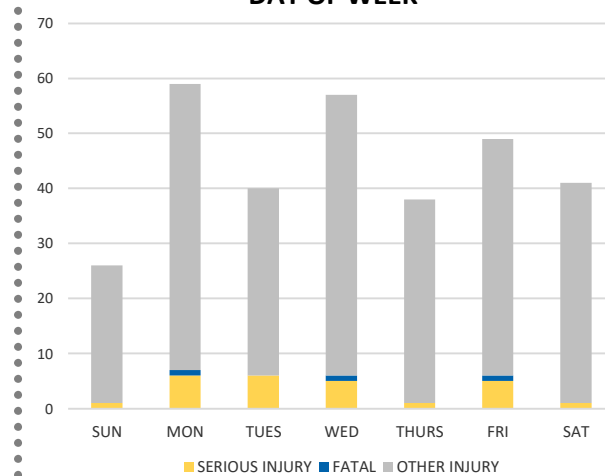
Severity	DUVAL COUNTY					DISTRICT 2	
	Fatal	Incapacitating Injury	Non-Incapacitating Injury	Possible Injury	No Injury/Property Damage Only*	Total	
Crashes	3	22	59	139	521	744	1,219
People Injured	3	25	72	210	N/A	310	525

Note: Crash severity is determined from the highest injury type in the crash (i.e. if a crash had both a fatal and a serious it is determined to be a fatal crash).

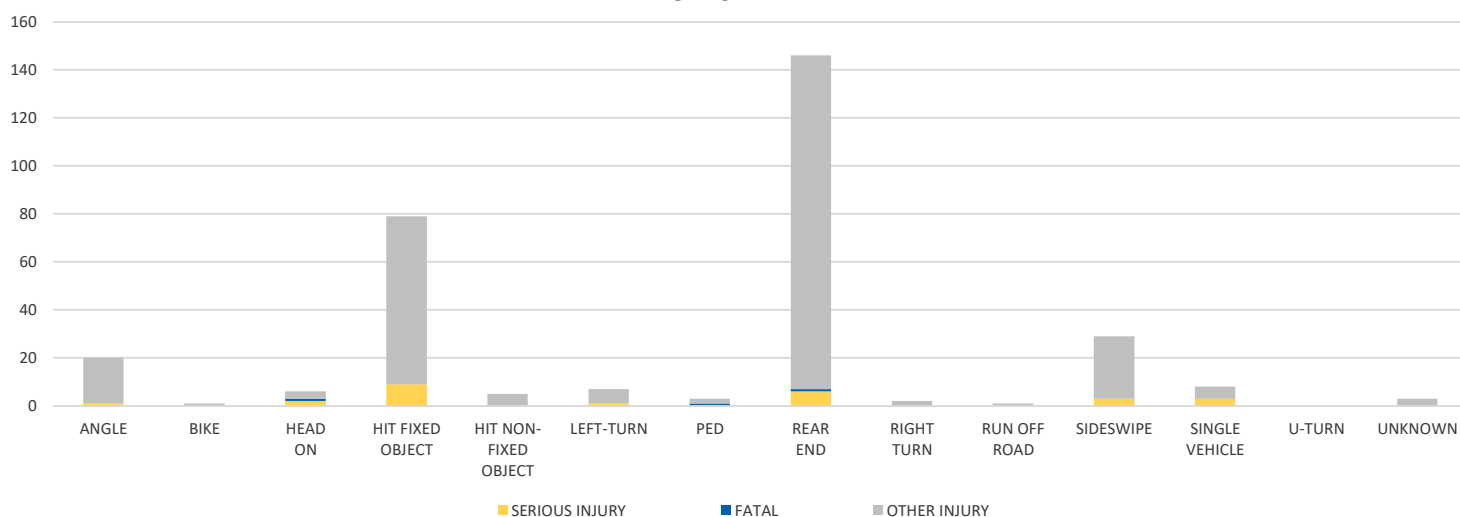
### CITY



### DAY OF WEEK



### CRASH TYPE



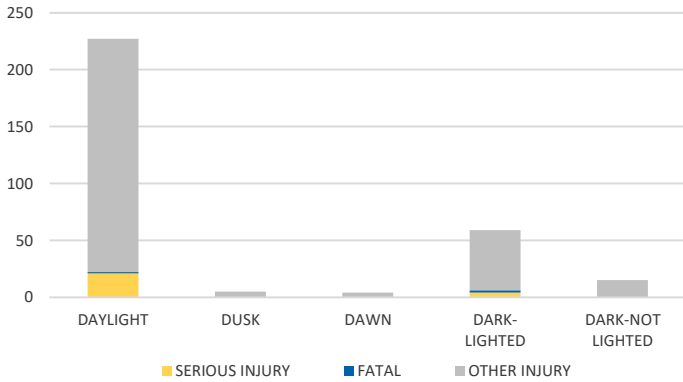
NOTE: Fatal/Serious/Other Injury in bar graphs indicates persons not crashes.  
SOURCE: 2021 CARS data (unofficial at time of report)

District 2 Community Traffic Safety Program

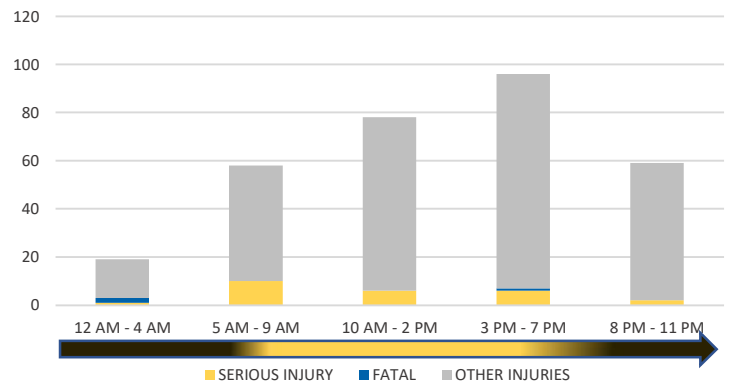
# DUVAL COUNTY 2021 Work Zone Crash Data Summary



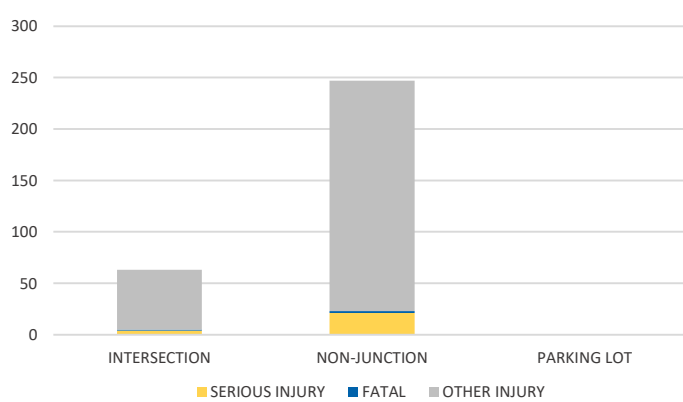
**LIGHTING**



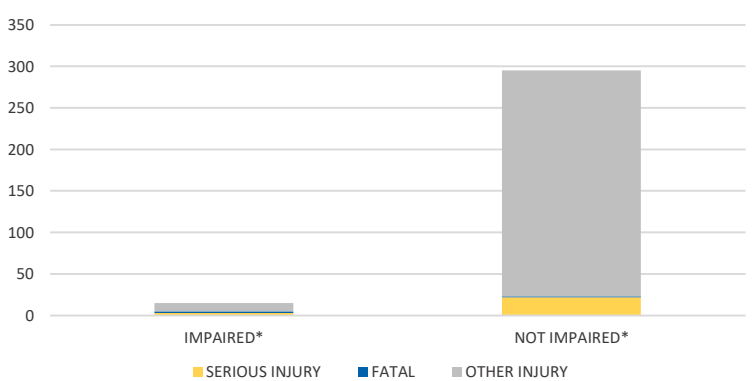
**TIME OF DAY**



**LOCATION ON ROADWAY**



**IMPAIRED**



\*Involving alcohol and/or drugs by either driver.

COMMERCIAL MOTOR VEHICLE (CMV) CRASHES VS TOTAL CRASHES			
Severity	CMV	All	% CMV
Fatal	0	3	0%
Incapacitating Injury	3	22	14%
Non-Incapacitating Injury	12	59	20%
Possible Injury	19	139	14%
No Injury/Property Damage Only	90	521	17%
<b>Total</b>	<b>124</b>	<b>744</b>	<b>17%</b>

NOTE: Fatal/Serious/Other Injury in bar graphs indicates persons not crashes.  
SOURCE: 2021 CARS data (unofficial at time of report)